

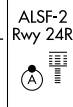
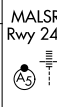
LOC/DME I-HQ B	APP CRS	Rwy Idg	24L	24R
111.7	251°	9483	8926	
Chan 54		TDZE	123	122
		Apt Elev	128	128

ILS or LOC RWY 24L

LOS ANGELES INTL (LAX)

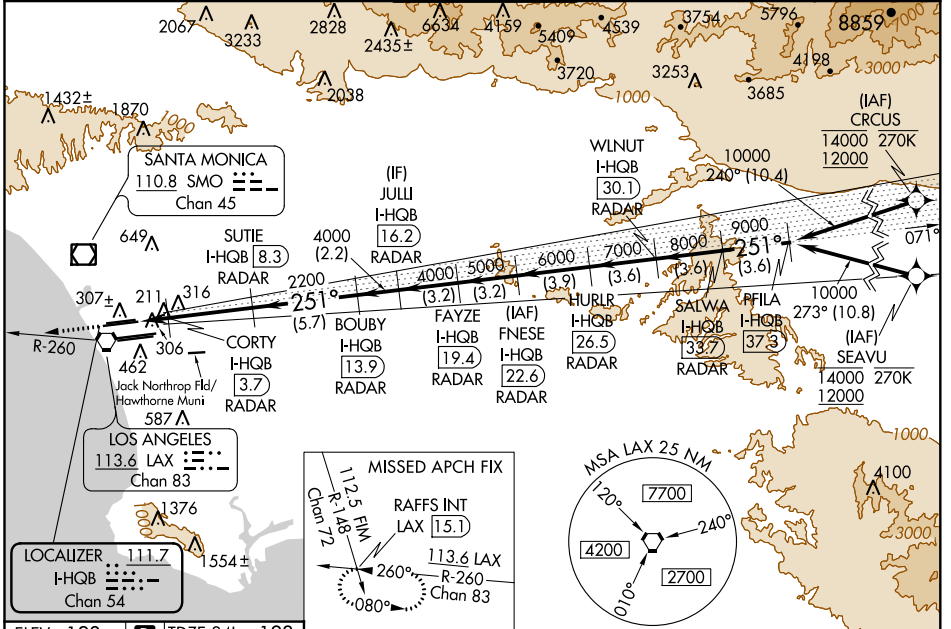
RNAV 1-GPS or RADAR required for procedure entry. DME or RADAR required.
 From CRCS: RNAV 1-GPS required. From SEAVU: RNAV 1-GPS required.

▼ Simultaneous approach authorized with HHR. Inop table does not apply to Sidestep Rwy 24R Cat A and B. Simultaneous approach authorized. LOC procedure NA during simultaneous operations with HHR LOC RWY 25. For inop ALS, increase Sidestep 24R Cat C visibility to 1½SM. For inop ALS, increase S-LOC 24L Cat C/D visibility to RVR 5500. #RVR 1800 authorized with use of FD or AP or HUD to DA.



MISSED APPROACH:
 Climb to 2000 on heading 251° and LAX VORTAC R-260 to RAFFS INT/LAX 15.1 DME and hold.

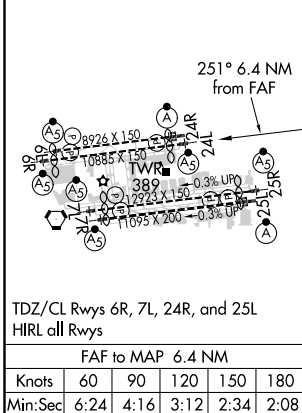
D-ATIS	SOCAL APP CON		LOS ANGELES TOWER		GND CON	CLNC DEL	CPDLC
ARR 133.8	124.3 363.2	124.9 269.0	N 133.9 239.3	N 121.65 327.0	S 121.75 327.0	120.35	
DEP 135.65	124.5 235.975	128.5 360.7	S 120.95 379.1	W 121.4 327.0		327.0	
	(APCH FM WEST) (225°-044°)	(090°-224°) (045°-089°)					



SW-3, 07 OCT 2021 to 04 NOV 2021

SW-3, 07 OCT 2021 to 04 NOV 2021

ELEV 128	D	TDZE 24L 123
		TDZE 24R 122



2000	LAX R-260	RAFFS INT	VGSI and ILS glidepath not coincident (VGSI Angle 3.00/TCH 79).				SALWA I-HQ B	PFILA I-HQ B			
hdg 251°						33.7	37.3				
*LOC only.	CORTY I-HQ B	SUTIE I-HQ B	BOUBY I-HQ B	JULI I-HQ B	FAYZE I-HQ B	FNESE I-HQ B	HURLR I-HQ B	WLNUT I-HQ B	RAFFS INT		
	3.7	8.3	13.9	16.2	19.4	22.6	26.5	30.1	15.1		
	RADAR	RADAR	RADAR	RADAR	RADAR	RADAR	RADAR	RADAR	RADAR		
	2200	2200	4000	4000	5000	6000	7000	8000	9000		
	1 NM	0.8	4.6 NM	5.7 NM	2.2 NM	3.2 NM	3.2 NM	3.9 NM	3.6 NM	3.6 NM	3.6 NM
CATEGORY	A		B		C		D				
S-ILS 24L#	323/24				200 (200-½)						
S-LOC 24L	500/24		377 (400-½)			500/35		377 (400-¾)			
SIDESTEP 24R	500/55				378 (400-1)			500-1½ 378 (400-1½)			