

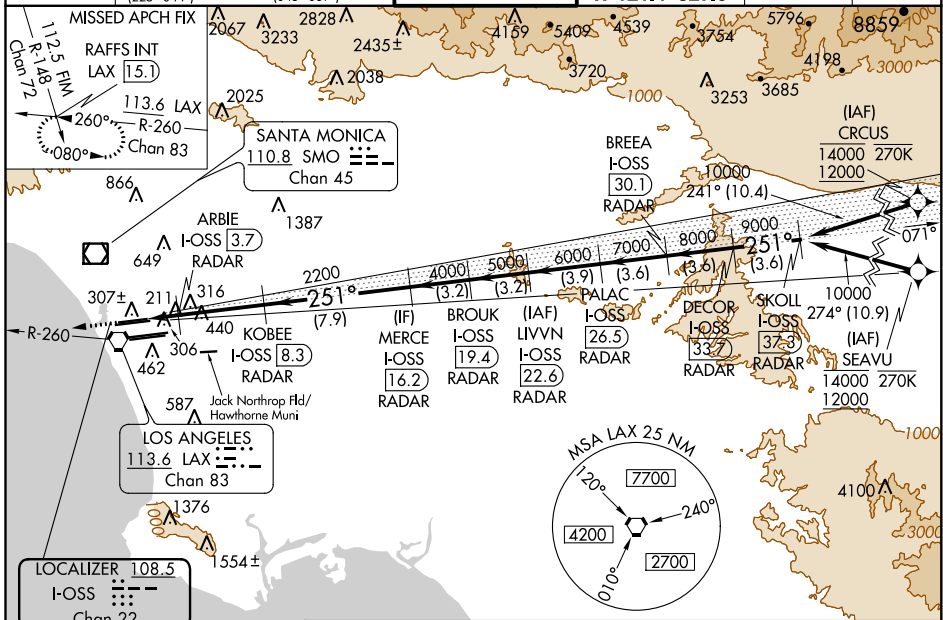
LOC/DME I-OSS <b>108.5</b> Chan <b>22</b>	APP CRS <b>251°</b>	Rwy Idg TDZE Apt Elev	24R <b>8926</b> <b>122</b> <b>128</b>	24L <b>9483</b> <b>123</b> <b>128</b>
---	------------------------	-----------------------------	--	--

# ILS or LOC RWY 24R

LOS ANGELES INTL (LAX)

From CRJUS, SEAVU: RNAV 1-GPS required. DME or RADAR required.	ALSF-2 Rwy 24R 	MALSR Rwy 24L 	MISSED APPROACH: Climb to 2000 on heading 251° and LAX VORTAC R-260 to RAFFS INT/LAX 15.1 DME and hold.
--	--------------------	-------------------	---

D-ATIS ARR <b>133.8</b> DEP <b>135.65</b>	SOCAL APP CON 124.3 363.2 (APCH FM WEST) 124.5 235.975 (225°-044°)	124.9 269.0 (090°-224°) 128.5 360.7 (045°-089°)	LOS ANGELES TOWER N <b>133.9</b> <b>239.3</b> S <b>120.95</b> <b>379.1</b>	GND CON N <b>121.65</b> <b>327.0</b> S <b>121.75</b> <b>327.0</b> W <b>121.4</b> <b>327.0</b>	CLNC DEL <b>120.35</b> <b>327.0</b>	CPDLC
---	--	--	--	--	---	-------



SW-3, 07 OCT 2021 to 04 NOV 2021

SW-3, 07 OCT 2021 to 04 NOV 2021

ELEV 128	TDZE 24R 122	TDZE 24L 123	hdg 251°	LAX R-260	RAFFS INT	VGSI and ILS glidepath not coincident (VGSI Angle 3.00/TCH 73).	SKOLL I-OSS [37.3] RADAR	DECOR I-OSS [37.3] RADAR	BREA I-OSS [30.1] RADAR	PALAC I-OSS [26.5] RADAR	LIVVN I-OSS [22.6] RADAR	BROUK I-OSS [19.4] RADAR	MERCE I-OSS [16.2] RADAR	KOBEE I-OSS [8.3] RADAR	ARBIE I-OSS [3.7] RADAR	251° 6.4 NM from FAF
<p>Diagram showing ILS profile with altitudes (2000, 2200, 4000, 5000, 6000, 7000, 8000, 9000, 10000) and distances from FAF (0.9, 0.9, 4.6 NM, 7.9 NM, 3.2 NM, 3.2 NM, 3.9 NM, 3.6 NM, 3.6 NM, 3.6 NM). TCH 55, GS 3.00°.</p>																
CATEGORY		A		B		C		D								
S-ILS 24R		322/18						200 (200-½)								
S-LOC 24R		480/24			358 (400-½)			480/30			358 (400-¾)					
SIDESTEP 24L		500/55						377 (400-1)			500-1½ 377 (400-1½)					