

LOC/DME I-LAX 109.9 Chan 36	APP CRS 251°	Rwy Idg 25L 25R	11095 11134
		TDZE 104 104	
		Apt Elev 128 128	

ILS or LOC RWY 25L

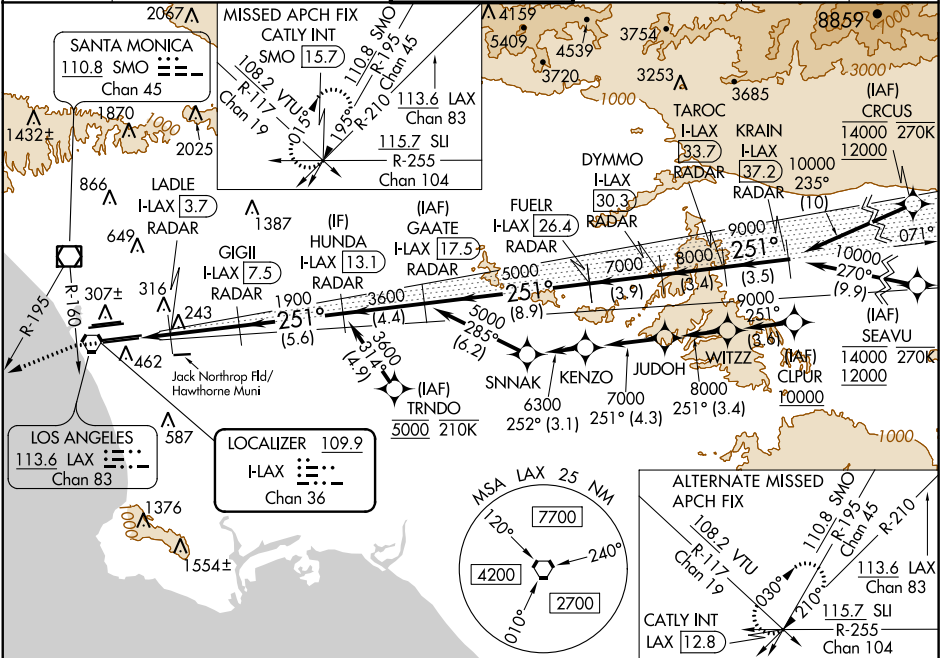
LOS ANGELES INTL (LAX)

DME or RADAR required.
RNP APCH-GPS. From CLPUR or CRCUS or SEAVU or TRNDO.
Simultaneous approach authorized. Simultaneous approach authorized with HHR. LOC procedure NA during simultaneous operations with HHR LOC RWY 25.



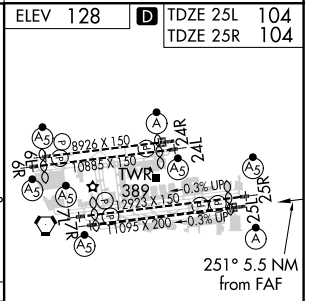
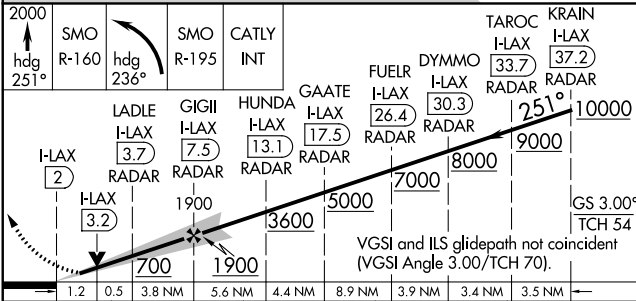
MISSED APPROACH: Climb to 2000 on heading 251° until crossing the SMO R-160, then left turn on heading 236° and on the SMO R-195 to CATLY INT/SMO 15.7 DME and hold.

D-ATIS ARR 133.8 DEP 135.65	SOCAL APP CON 124.3 363.2 (APCH FM WEST) 124.5 235.975 (225°-044°)	124.9 269.0 (090°-224°) 128.5 360.7 (045°-089°)	LOS ANGELES TOWER N 133.9 239.3 S 120.95 379.1	GND CON N 121.65 327.0 S 121.75 327.0 W 121.4 327.0	CLNC DEL 120.35 327.0	CPDLC
---	--	--	--	---	---	-------



SW-3, 07 OCT 2021 to 04 NOV 2021

SW-3, 07 OCT 2021 to 04 NOV 2021



CATEGORY	A	B	C	D
S-ILS 25L	304/18 200 (200-½)			
S-LOC 25L	540/24	436 (500-½)	540/40	436 (500-¾)
SIDESTEP 25R	540/55 436 (500-1)		540-1½ 436 (500-1½)	

ELEV 128	TDZE 25L 104	TDZE 25R 104			
TDZ/CL Rwy 6R, 7L, 24R, and 25L HIRL all Rwy's					
FAF to MAP 5.5 NM					
Knots	60	90	120	150	180
Min:Sec	5:30	3:40	2:45	2:12	1:50