

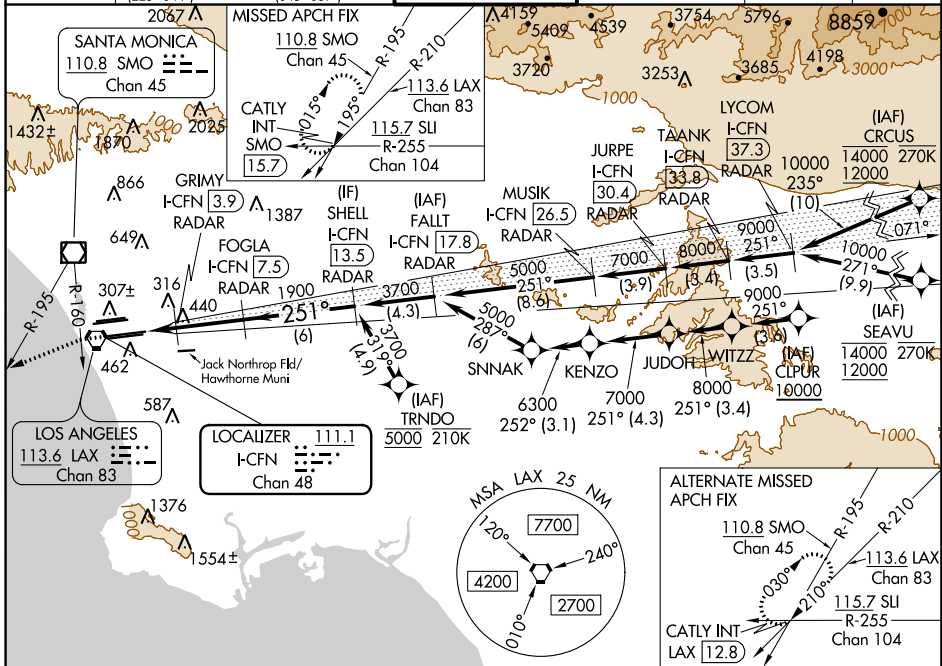
| | | | | |
|--|------------------------|-----------------------------|---|---|
| LOC/DME I-FCFN 111.1 Chan 48 | APP CRS 251° | Rwy Idg TDZE Apt Elev | 25R 11134 104 128 | 25L 11095 104 128 |
|--|------------------------|-----------------------------|---|---|

ILS or LOC RWY 25R

LOS ANGELES INTL (LAX)

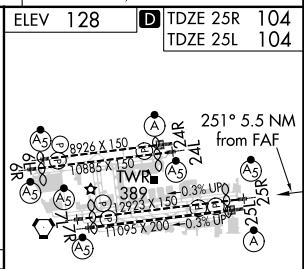
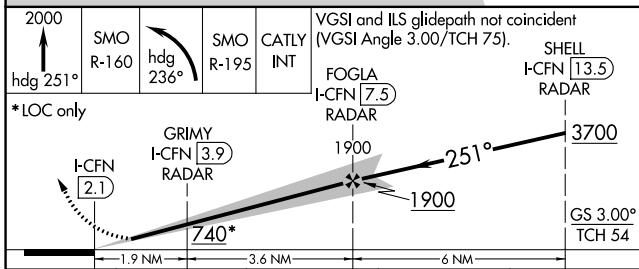
| | | | |
|--|---------------|----------------|--|
| From CRCSU, SEAVU, TRNDO, CLPUR: RNAV 1-GPS required. DME or RADAR required. | MALSR Rwy 25R | ALSF-2 Rwy 25L | MISSED APPROACH: Climb to 2000 on heading 251° until crossing SMO R-160 then left turn on heading 236° and SMO VOR/DME R-195 to CATLY INT/SMO 15.7 DME and hold. |
| Simultaneous approach authorized. Simultaneous approach authorized with HHR. For inop ALS increase Sidestep 25L Cat C visibility to 1½ SM. #RVR 1800 authorized with use of FD or AP or HUD to DA. | | | |

| | | | | | | |
|---|--|--|--|---|---|-------|
| D-ATIS ARR 133.8 DEP 135.65 | SOCAL APP CON 124.3 363.2 (APCH FM WEST) 124.5 235.975 (225°-044°) | 124.9 269.0 (090°-224°) 128.5 360.7 (045°-089°) | LOS ANGELES TOWER N 133.9 239.3 S 120.95 379.1 | GND CON N 121.65 327.0 S 121.75 327.0 W 121.4 327.0 | CLNC DEL 120.35 327.0 | CPDLC |
|---|--|--|--|---|---|-------|



SW-3, 07 OCT 2021 to 04 NOV 2021

SW-3, 07 OCT 2021 to 04 NOV 2021



| | | | | |
|--------------|--------------------|--------------|--------------|--------------|
| CATEGORY | A | B | C | D |
| S-ILS 25R# | 304/24 200 (200-½) | | | |
| S-LOC 25R | 700/24 | 596 (600-½) | 700-1¼ | 596 (600-1¼) |
| SIDESTEP 25L | 700/55 | 596 (600-1) | 700-1¼ | 700-1½ |
| | | 596 (600-1¼) | 596 (600-1½) | |

| | | | | | |
|---|--------------|--------------|------|------|------|
| ELEV 128 | TDZE 25R 104 | TDZE 25L 104 | | | |
| TDZ/CL Rwy's 6R, 7L, 24R, and 25L HIRL all Rwy's | | | | | |
| FAF to MAP 5.5 NM | | | | | |
| Knots | 60 | 90 | 120 | 150 | 180 |
| Min:Sec | 5:30 | 3:40 | 2:45 | 2:12 | 1:50 |