

LOC/DME HAS <b>111.1</b> Chan <b>48</b>	APP CRS <b>071°</b>	Rwy Idg <b>11259 11095</b> TDZE <b>128 128</b> Apt Elev <b>128 128</b>	7L <b>7R</b>
---	------------------------	--	-----------------

# ILS or LOC RWY 7L

LOS ANGELES INTL (LAX)

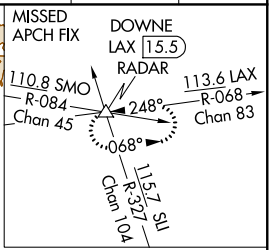
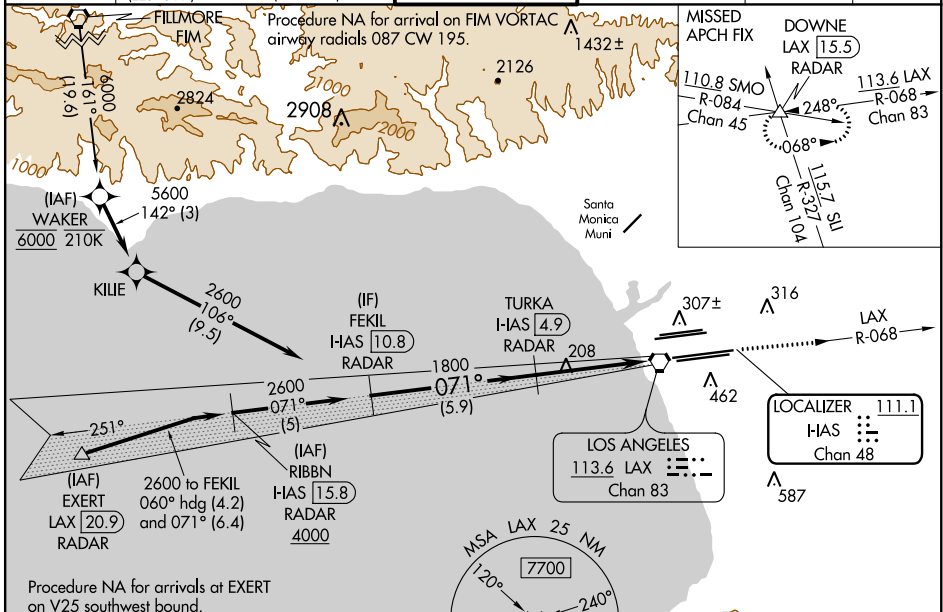
From FIM VORTAC: RNAV 1-GPS required. DME or RADAR required.

Simultaneous approach authorized. Autopilot coupled approach NA below 925. Inop table does not apply to Sidestep 7R Cats A and B.

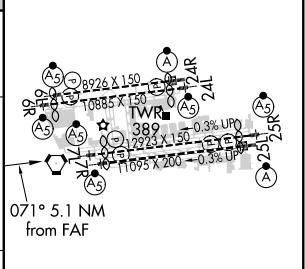
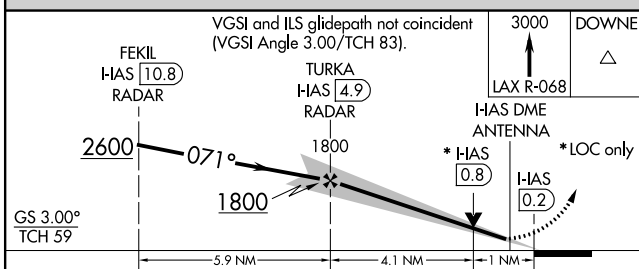


MISSED APPROACH: Climb to 3000 on LAX VORTAC R-068 to DOWNE INT/LAX 1.5.5 DME/RADAR and hold.

D-ATIS ARR <b>133.8</b> DEP <b>135.65</b>	SOCAL APP CON <b>124.3 363.2</b> (APCH FM WEST) <b>124.5 235.975</b> (225°-044°)	<b>124.9 269.0</b> (090°-224°) <b>128.5 360.7</b> (045°-089°)	LOS ANGELES TOWER <b>N 133.9 239.3</b> <b>S 120.95 379.1</b>	GND CON <b>N 121.65 327.0</b> <b>S 121.75 327.0</b> <b>W 121.4 327.0</b>	CLNC DEL <b>120.35</b> <b>327.0</b>	CPDLC
---	--	--	--	---	---	-------



ELEV 128	TDZE 7L 128	TDZE 7R 128
----------	-------------	-------------



CATEGORY	A	B	C	D
S-ILS 7L	336/18 208 (300-½)			
S-LOC 7L	520/24	392 (400-½)	520/35	392 (400-¾)
SIDESTEP 7R	520/55 392 (400-1)			520-1½ 392 (400-1½)
FAF to MAP 5.1 NM				
Knots: 60 90 120 150 180				
Min:Sec: 5:06 3:24 2:33 2:02 1:42				

SW-3, 07 OCT 2021 to 04 NOV 2021

SW-3, 07 OCT 2021 to 04 NOV 2021