

LOC/DME I-MKZ 109.9 Chan 36	APP CRS 071°	Rwy Idg 7R 11095 11259 7L 11259	TDZE 128 128	Apt Elev 128 128
--	------------------------	---	------------------------	----------------------------

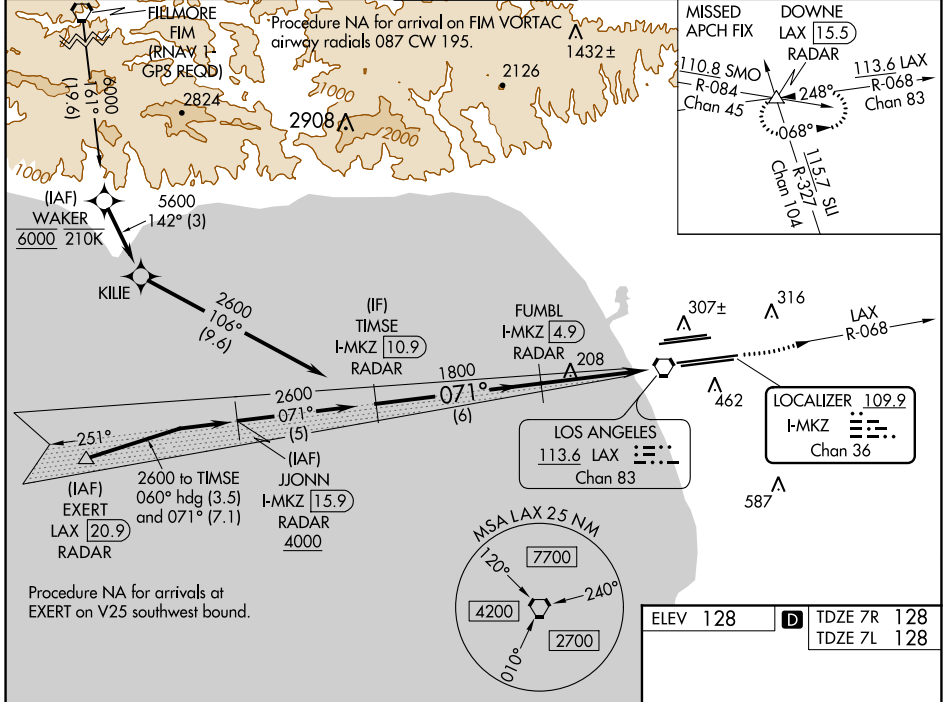
ILS or LOC RWY 7R

LOS ANGELES INTL (LAX)

Simultaneous approach authorized. DME or RADAR required. Inop table does not apply to Sidestep Rwy 7L Cats A and B. # RVR 1800 authorized with use of FD or AP or HUD to DA.

MALSR Rwy 7R	MALSR Rwy 7L	MISSED APPROACH: Climb to 3000 on LAX VORTAC R-068 to DOWNNE INT/ LAX 15.5 DME/RADAR and hold.
--------------	--------------	--

D-ATIS ARR 133.8 DEP 135.65	SOCAL APP CON 124.3 363.2 (APCH FM WEST) 124.5 235.975 (225°-044°)	124.9 269.0 (090°-224°) 128.5 360.7 (045°-089°)	LOS ANGELES TOWER N 133.9 239.3 S 120.95 379.1	GND CON N 121.65 327.0 S 121.75 327.0 W 121.4 327.0	CLNC DEL 120.35 327.0	CPDLC
---	--	--	--	---	---	-------



CATEGORY	A		B		C		D	
	S-ILS 7R#		328/24		200 (200-1/2)			
	S-LOC 7R		460/24		332 (400-1/2)		460/26 332 (400-1/2)	
	SIDESTEP 7L		520/55		392 (400-1)		520-1 1/2 392 (400-1 1/2)	

ELEV 128	TDZE 7R 128	TDZE 7L 128												
<p>Downne approach diagram showing 3000 ft altitude, LAX R-068, and various navigation aids like I-MKZ 0.7, 0.2, 4.9, 10.9 and DME ANTENNA.</p>														
<p>FAF to MAP 5.1 NM</p> <table border="1"> <tr> <td>Knots</td> <td>60</td> <td>90</td> <td>120</td> <td>150</td> <td>180</td> </tr> <tr> <td>Min:Sec</td> <td>5:06</td> <td>3:24</td> <td>2:33</td> <td>2:02</td> <td>1:42</td> </tr> </table>			Knots	60	90	120	150	180	Min:Sec	5:06	3:24	2:33	2:02	1:42
Knots	60	90	120	150	180									
Min:Sec	5:06	3:24	2:33	2:02	1:42									