

LAXX ONE DEPARTURE

AL-237 (FAA)

LOS ANGELES INTL (LAX)
LOS ANGELES, CALIFORNIA

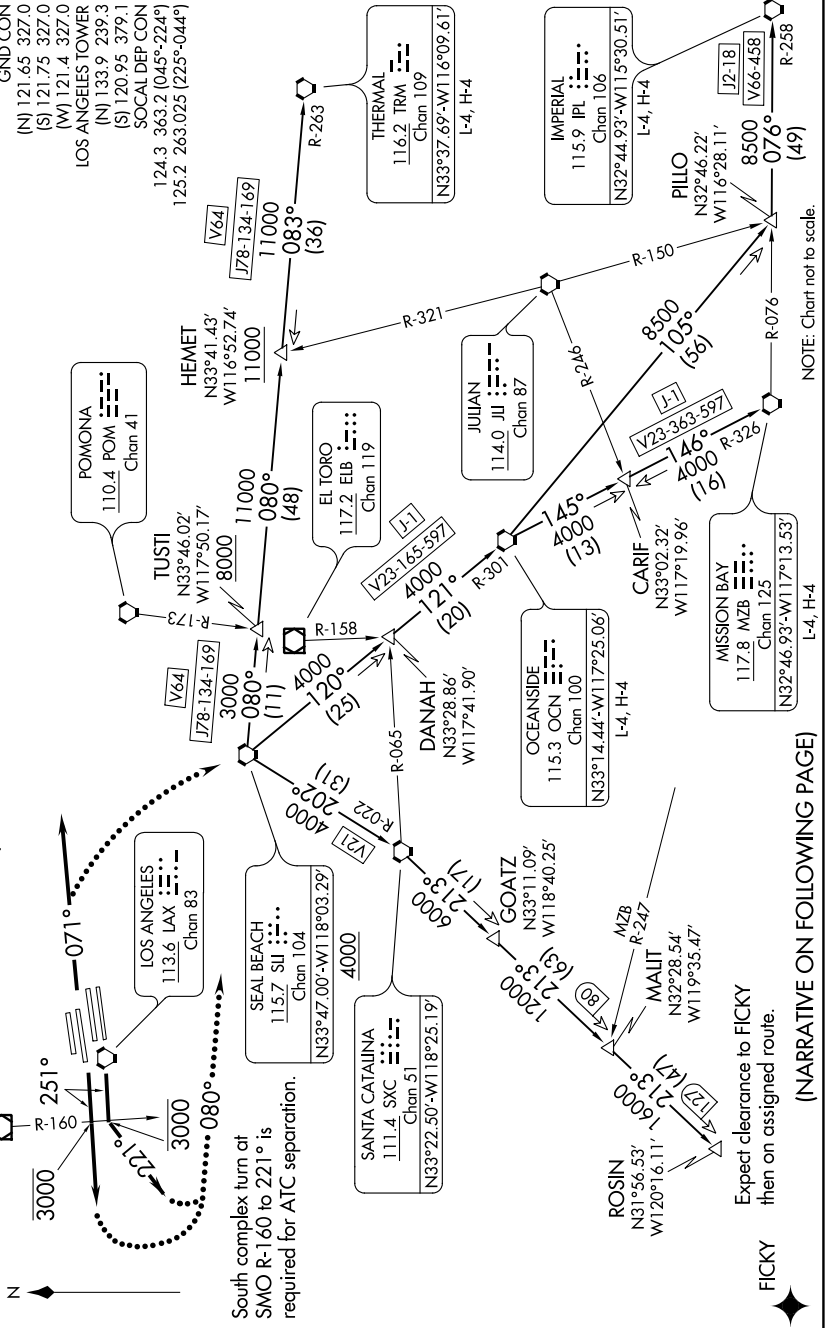
SW-3, 07 OCT 2021 to 04 NOV 2021

**TOP ALTITUDE:
ASSIGNED BY ATC**

TAKEOFF MINIMUMS
Rwy 6L/R, 7L/R, 24L/R, 25L/R: Standard.

NOTE: This departure is for
turbojet aircraft only.
NOTE: RADAR and DME required.

D-ATIS DEP 135.65
 CLNC DEL 120.35 327.0
 CPDLC 120.35 327.0
 GND CON (N) 121.65 327.0
 (S) 121.75 327.0
 (W) 121.4 327.0
 LOS ANGELES TOWER (N) 133.9 239.3
 (S) 120.95 379.1
 SOCIAL DEP CON 124.3 363.2 (045°-224°)
 125.2 263.025 (225°-044°)



NOTE: Chart not to scale.

(NARRATIVE ON FOLLOWING PAGE)

L-4, H-4

LAXX ONE DEPARTURE

LOS ANGELES, CALIFORNIA
LOS ANGELES INTL (LAX)

SW-3, 07 OCT 2021 to 04 NOV 2021

