

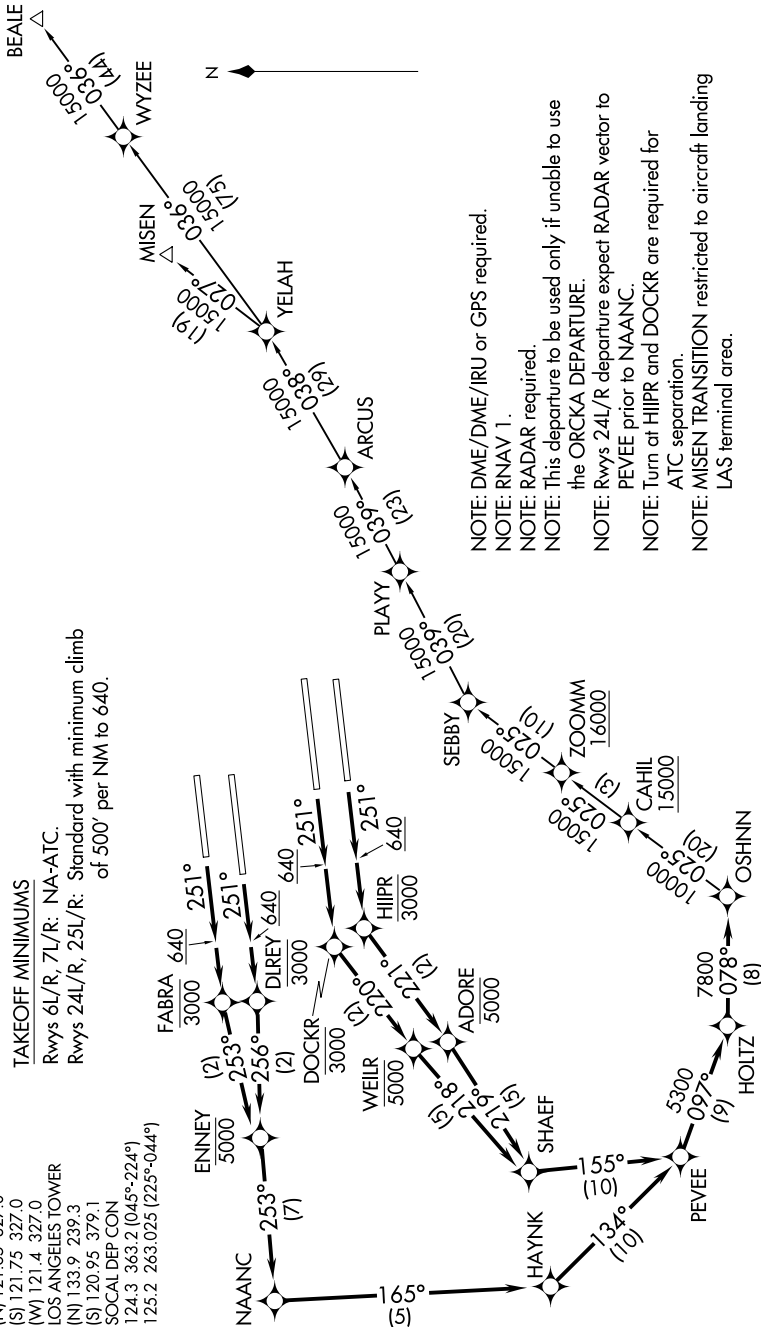
SW-3, 07 OCT 2021 to 04 NOV 2021

**TOP ALTITUDE:
17000**

D-ATIS DEP
135.65
CLNC DEL
120.35 327.0
CPDLC
GND CON
(N) 121.65 327.0
(S) 121.75 327.0
(W) 121.4 327.0
LOS ANGELES TOWER
(N) 133.9 239.3
(S) 120.95 379.1
SOCAL DEP CON
124.3 363.2 (045°-224°)
125.2 263.025 (225°-044°)

TAKEOFF MINIMUMS

Rwys 6L/R, 7L/R: NA-ATC.
Rwys 24L/R, 25L/R: Standard with minimum climb
of 500' per NM to 640.



NOTE: DME/DME/IRU or GPS required.

NOTE: RNAV 1.

NOTE: RADAR required.

NOTE: This departure to be used only if unable to use the ORCKA DEPARTURE.

NOTE: Rwys 24L/R departure expect RADAR vector to PEVEE prior to NAANC.

NOTE: Turn at HJIPR and DOCKR are required for ATC separation.

NOTE: MISEN TRANSITION restricted to aircraft landing LAS terminal area.

(NARRATIVE ON FOLLOWING PAGE)

NOTE: Chart not to scale.

SW-3, 07 OCT 2021 to 04 NOV 2021