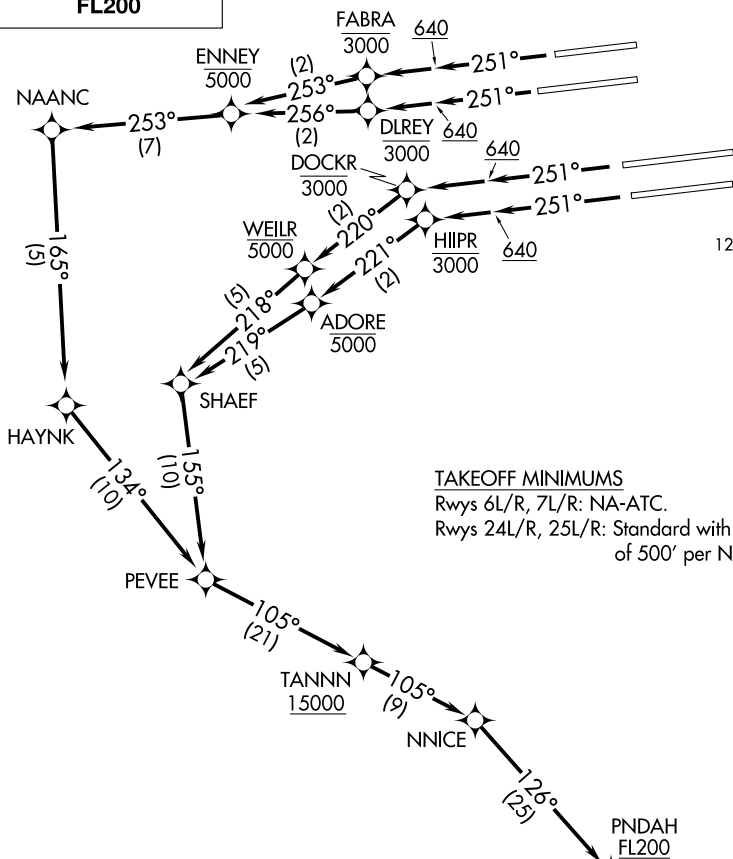


PNDHA TWO DEPARTURE (RNAV)

AL-237 (FAA)

LOS ANGELES INTL (LAX)
LOS ANGELES, CALIFORNIA

**TOP ALTITUDE:
FL200**



D-ATIS DEP 135.65
 CLNC DEL 120.35 327.0
 CPDLC
 GND CON (N) 121.65 327.0
 (S) 121.75 327.0
 (W) 121.4 327.0
 LOS ANGELES TOWER (N) 133.9 239.3
 (S) 120.95 379.1
 SOCAL DEP CON 124.3 363.2 (045°-224°)
 125.2 263.025 (225°-044°)

TAKEOFF MINIMUMS
 Rwy 6L/R, 7L/R: NA-ATC.
 Rwy 24L/R, 25L/R: Standard with minimum climb of 500' per NM to 640.

- NOTE: DME/DME/IRU or GPS required.
- NOTE: RADAR required.
- NOTE: RNAV 1.
- NOTE: Turbojet aircraft only.
- NOTE: Turn at HIIPR and DOCKR are required for ATC separation.

(NARRATIVE ON FOLLOWING PAGE)

NOTE: Chart not to scale.

PNDHA TWO DEPARTURE (RNAV)

LOS ANGELES, CALIFORNIA
LOS ANGELES INTL (LAX)

SW-3, 07 OCT 2021 to 04 NOV 2021

SW-3, 07 OCT 2021 to 04 NOV 2021