

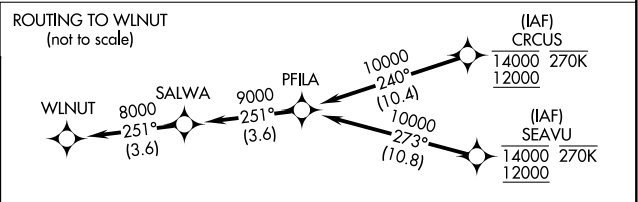
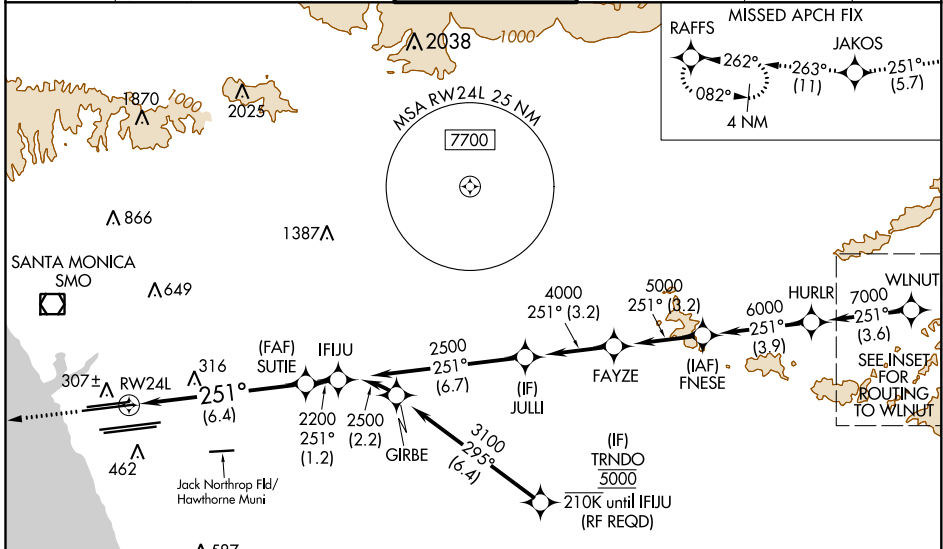
APP CRS	Rwy Idg	9483
251°	TDZE	123
	Apt Elev	128

RNAV (RNP) Z RWY 24L

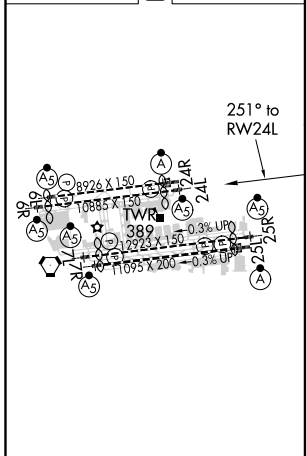
LOS ANGELES INTL (LAX)

RNP AR APCH.	MALSR	MISSED APPROACH: Climb to 2000 on track 251° to JAKOS and track 263° to RAFFS and hold.
<p>Simultaneous approach authorized. Simultaneous approach authorized with HHR. For uncompensated Baro-VNAV systems, procedure NA below 5°C or above 54°C. For inop ALS, increase RNP 0.15 all Cats visibility to 1 3/8 SM.</p>		

D-ATIS	SOCAL APP CON	LOS ANGELES TOWER	GND CON	CLNC DEL	CPDLC
ARR 133.8	124.3 363.2 (APCH FM WEST)	124.9 269.0 (090°-224°)	N 121.65 327.0 S 121.75 327.0 W 121.4 327.0	120.35 327.0	
DEP 135.65	124.5 235.975 (225°-044°)	128.5 360.7 (045°-089°)			



ELEV 128	D	TDZE 123
-----------------	----------	-----------------



2000	JAKOS	fr 263°	RAFFS	See planview for multiple IF locations.	IFJUU
tr 251°					
VGSIs and RNAV glidepath not coincident (VGSIs Angle 3.00/TCH 79).					
					GP 3.00° TCH 59

CATEGORY	A	B	C	D
RNP 0.15 DA		545/35	422 (500-5%)	
RNP 0.30 DA		592/45	469 (500-7%)	

TDZ/CL Rwy's 6R, 7L, 24R, and 25L
HIRL all Rwy's

AUTHORIZATION REQUIRED

SW-3, 07 OCT 2021 to 04 NOV 2021

SW-3, 07 OCT 2021 to 04 NOV 2021