

APP CRS	Rwy Idg	<b>8566</b>
<b>071°</b>	TDZE	<b>119</b>
	Apt Elev	<b>128</b>

# RNAV (RNP) Z RWY 6L

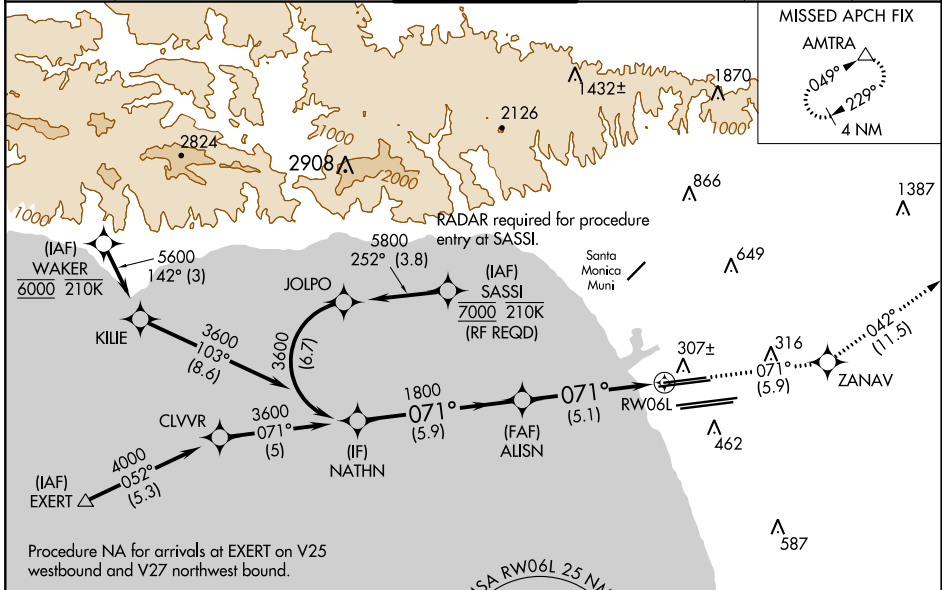
LOS ANGELES INTL (LAX)

**▽** For uncompensated Baro-VNAV systems, procedure NA below 5°C (41°F) or above 54°C (130°F). Simultaneous approach authorized. GPS required. For inop MALSR, increase RNP 0.30 all Cats visibility to RVR 6000.



**MISSED APPROACH:** Climb to 3000 on track 071° to ZANAV and on track 042° to AMTRA and hold.

D-ATIS	SOCL APP CON	LOS ANGELES TOWER	GND CON	CLNC DEL	CPDLC
ARR <b>133.8</b>	<b>124.3 363.2</b> <small>(APCH FM WEST)</small>	<b>124.9 269.0</b> <small>(090°-224°)</small>	<b>N 133.9 239.3</b>	<b>120.35</b>	
DEP <b>135.65</b>	<b>124.5 235.975</b> <small>(225°-044°)</small>	<b>128.5 360.7</b> <small>(045°-089°)</small>	<b>S 120.95 379.1</b>	<b>327.0</b>	
			<b>N 121.65 327.0</b>		
			<b>S 121.75 327.0</b>		
			<b>W 121.4 327.0</b>		

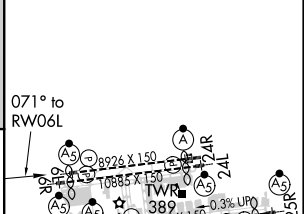


SW-3, 07 OCT 2021 to 04 NOV 2021

SW-3, 07 OCT 2021 to 04 NOV 2021



ELEV 128	<b>D</b> TDZE 119
----------	-------------------



VGSi and RNAV glidepath not coincident (VGSi Angle 3.00/TCH 77).			
NATHN	ALISN	ZANAV	AMTRA
3600	1800	3000	tr 042°
GP 3.00°		tr 071°	tr 042°
TCH 55			
	5.9 NM	5.1 NM	

CATEGORY	A	B	C	D
RNP 0.30 DA		484/40	365 (400-¾)	

**AUTHORIZATION REQUIRED**

TDZ/CL Rwy 6R, 7L, 24R, and 25L  
HIRL all Rwy's