

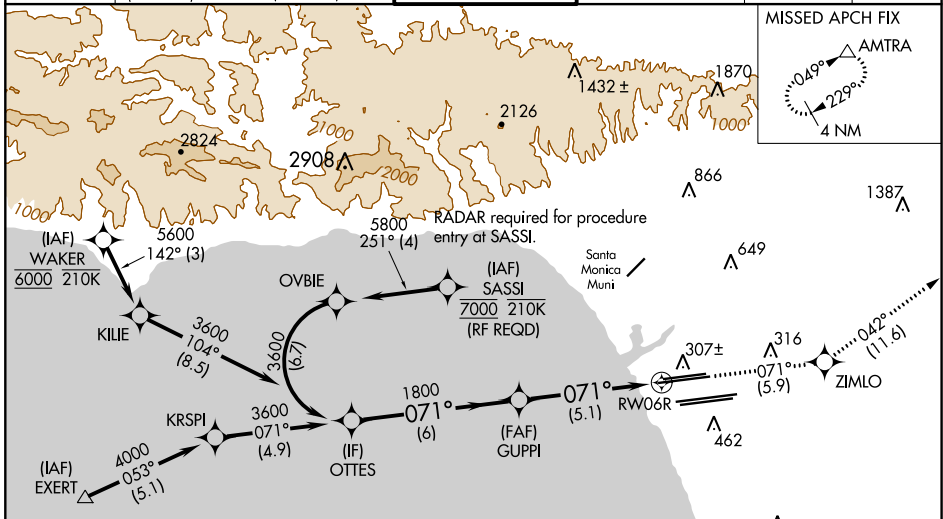
APP CRS 071°	Rwy Idg TDZE Apt Elev	9748 116 128
------------------------	-----------------------------	---

RNAV (RNP) Z RWY 6R

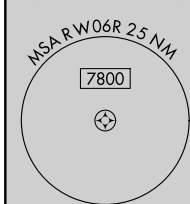
LOS ANGELES INTL (LAX)

<p>For uncompensated Baro-VNAV systems, procedure NA below 5°C (41°F) or above 54°C (130°F). GPS required. Simultaneous approach authorized. For inop ALS, increase RNP 0.30 all Cats visibility to RVR 6000.</p>	<p>MALSR</p>	<p>MISSED APPROACH: Climb to 3000 on track 071° to ZIMLO and on track 042° to AMTRA and hold.</p>
---	--------------	---

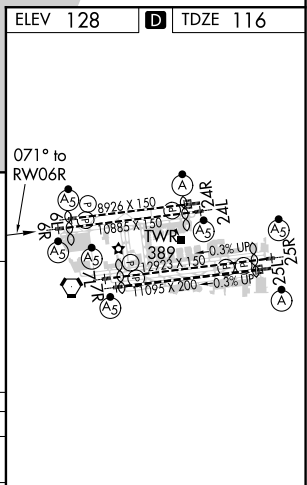
D-ATIS ARR 133.8 DEP 135.65	<p>SOCAL APP CON</p> <p>124.3 363.2 (APCH FM WEST) 124.5 235.975 (225°-044°)</p>	<p>124.9 269.0 (090°-224°) 128.5 360.7 (045°-089°)</p>	<p>LOS ANGELES TOWER</p> <p>N 133.9 239.3 S 120.95 379.1</p>	<p>GND CON</p> <p>N 121.65 327.0 S 121.75 327.0 W 121.4 327.0</p>	<p>CLNC DEL</p> <p>120.35 327.0</p>	<p>CPDLC</p>
---	--	--	--	--	---	--------------



Procedure NA for arrivals at EXERT on V25 westbound and V27 northwest bound.



<p>VGSI and RNAV glidepath not coincident (VGSI Angle 3.00/TCH 69).</p>	<p>3000</p> <p>↑</p> <p>tr 071°</p>	<p>ZIMLO</p> <p>✧</p> <p>tr 042°</p>	<p>AMTRA</p> <p>△</p>	
<p>OTTES</p> <p>3600</p>	<p>GUPPI</p> <p>1800</p>	<p>RW06R</p>		
<p>GP 3.00°</p> <p>TCH 53</p>	<p>6 NM</p>	<p>5.1 NM</p>		
CATEGORY	A	B	C	D
RNP 0.30 DA	471/40 355 (400-¾)			



AUTHORIZATION REQUIRED

TDZ/CL Rwy 6R, 7L, 24R, and 25L
HIRL all Rwy's

SW-3, 07 OCT 2021 to 04 NOV 2021

SW-3, 07 OCT 2021 to 04 NOV 2021