

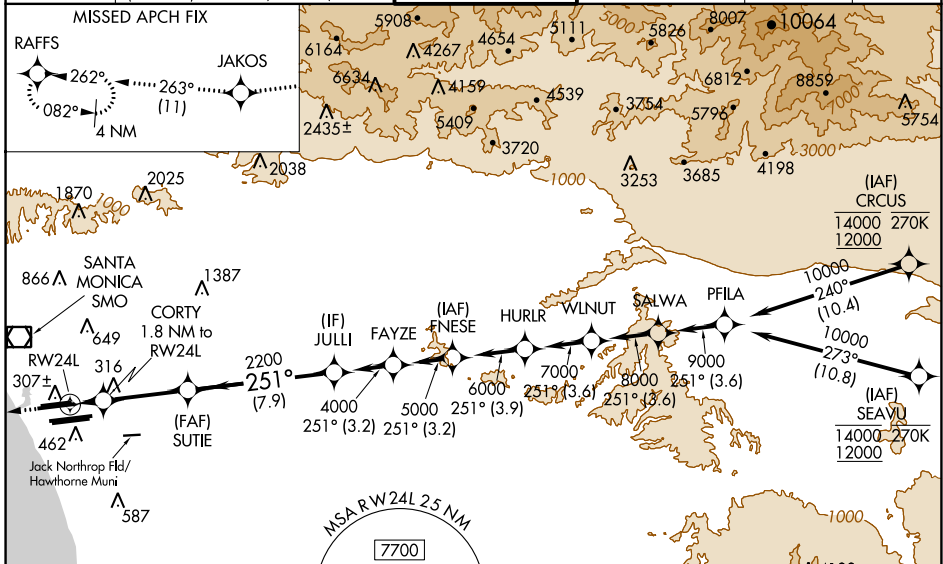
| | | | |
|--|------------------------|-----------------------------|---|
| WAAS CH 56407 W24B | APP CRS 251° | Rwy Idg TDZE Apt Elev | 9483 123 128 |
|--|------------------------|-----------------------------|---|

RNAV (GPS) Y RWY 24L

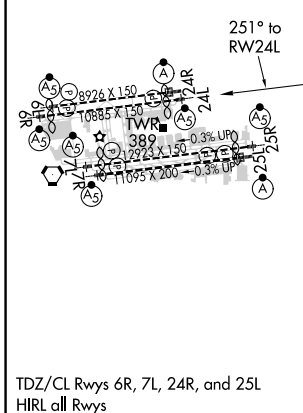
LOS ANGELES INTL (LAX)

| | | | |
|--|--|-------|---|
| RNP APCH. | | MALSR | MISSED APPROACH: Climb to 2000 direct JAKOS and on track 263° to RAFFS and hold. |
| <p>Simultaneous approach authorized. LNAV procedure NA during simultaneous operations. Use of FD or AP providing RNAV track guidance required during simultaneous operations. Simultaneous approach authorized with HHR. For uncompensated Baro-VNAV systems, LNAV/VNAV NA below 5°C or above 54°C. For inop ALS, increase LNAV/VNAV all Cats visibility to 1½ SM. #RVR 1800 authorized with use of FD or AP or HUD to DA.</p> | | | |

| | | | | | | |
|---|--|--|--|---|---|-------|
| D-ATIS ARR 133.8 DEP 135.65 | SOCAL APP CON 124.3 363.2 (APCH FM WEST) 124.5 235.975 (225°-044°) | 124.9 269.0 (090°-224°) 128.5 360.7 (045°-089°) | LOS ANGELES TOWER N 133.9 239.3 S 120.95 379.1 | GND CON N 121.65 327.0 S 121.75 327.0 W 121.4 327.0 | CLNC DEL 120.35 327.0 | CPDLC |
|---|--|--|--|---|---|-------|



| | | |
|----------|----------|----------|
| ELEV 128 | D | TDZE 123 |
|----------|----------|----------|



| | | | | |
|------------|----------------------------|---------|---------------|--|
| 2000 | JAKOS | tr 263° | RAFFS | VGSI and RNAV glidepath not coincident (VGSI Angle 3.00/TCH 79). |
| *LNAV only | | | | |
| | CORTY 1.8 NM to RWY 24L | | SUTIE 2200 | JULLI 4000 |
| | | 740* | 2200 | GP 3.00° TCH 59 |
| | 1.8 NM | 4.6 NM | 7.9 NM | |

| | | | | |
|--------------|--------|-------------|-------------|-------------|
| CATEGORY | A | B | C | D |
| LPV DA# | | 323/24 | 200 (200-½) | |
| LNAV/VNAV DA | | 608/50 | 485 (500-1) | |
| LNAV MDA | 660/24 | 537 (600-½) | 660/55 | 537 (600-1) |

SW-3, 07 OCT 2021 to 04 NOV 2021

SW-3, 07 OCT 2021 to 04 NOV 2021