


WAAS CH <b>82507</b> <b>W06A</b>	APP CRS <b>071°</b>	Rwy Idg TDZE <b>119</b> Apt Elev <b>128</b>	<b>8566</b>
--	------------------------	---	-------------

# RNAV (GPS) Y RWY 6L

LOS ANGELES INTL (LAX)

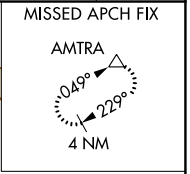
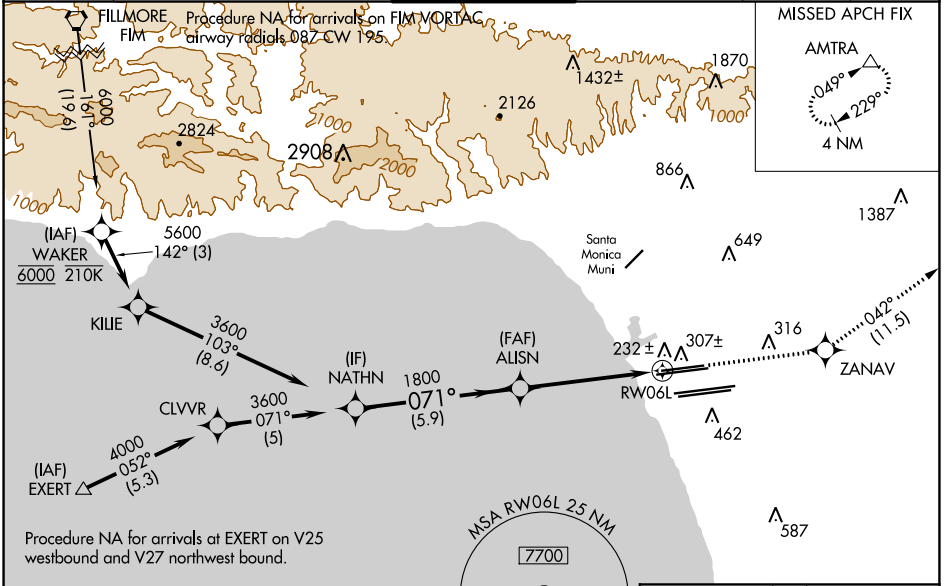
**▽** For uncompensated Baro-VNAV systems, LNAV/VNAV NA below 5°C (41°F) or above 54°C (130°F). DME/DME RNP-0.3 NA. LNAV procedure NA during simultaneous operations. Use of FD or AP providing RNAV track guidance required during simultaneous operations. Simultaneous approach authorized.

**MALSR**



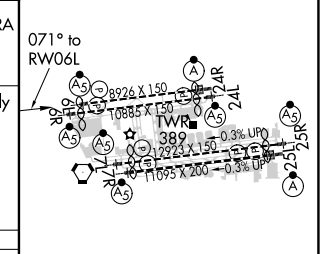
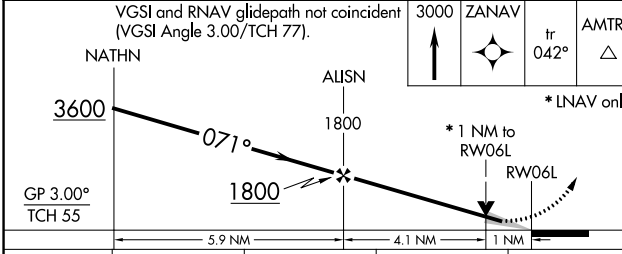
**MISSED APPROACH:** Climb to 3000 direct ZANAV and track 042° to AMTRA and hold.

D-ATIS ARR <b>133.8</b> DEP <b>135.65</b>	SOCAL APP CON <b>124.3 363.2 124.9 269.0</b> (APCH FM WEST) (090°-224°) <b>124.5 235.975 128.5 360.7</b> (223°-044°) (043°-089°)	LOS ANGELES TOWER <b>N 133.9 239.3</b> <b>S 120.95 379.1</b>	GND CON <b>N 121.65 327.0</b> <b>S 121.75 327.0</b> <b>W 121.4 327.0</b>	CLNC DEL <b>120.35</b> <b>327.0</b>	CPDLC
---	--	--	---	---	-------



GP 3.00° TCH 55	3600	1800	1800	3000
	NATHN	ALISN	ZANAV	AMTRA
	071°	071°	042°	
	5.9 NM	4.1 NM	1 NM	

ELEV 128 **D** TDZE 119



CATEGORY	A	B	C	D
LPV DA		369/24	250 (300-½)	
LNAV/VNAV DA		411/24	292 (300-½)	
LNAV MDA	500/24	381 (400-½)	500/35	381 (400-¾)

TDZ/CL Rwy 6R, 7L, 24R, and 25L  
HIRL all Rwy's

SW-3, 07 OCT 2021 to 04 NOV 2021

SW-3, 07 OCT 2021 to 04 NOV 2021