

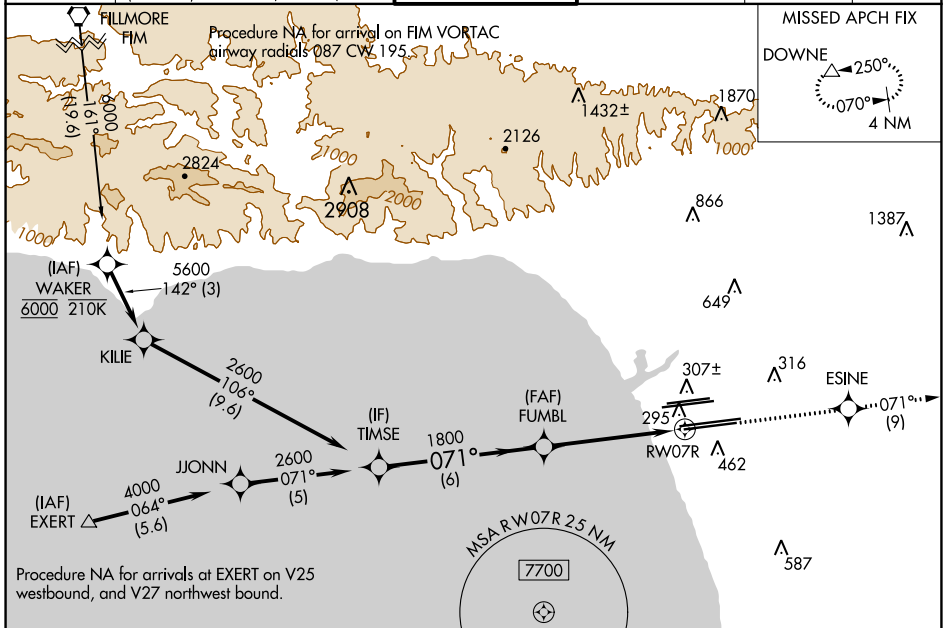
|  |                        |  |
|--|------------------------|--|
| WAAS<br>CH <b>69603</b><br><b>W07B</b> | APP CRS<br><b>071°</b> | Rwy Idg <b>11095</b><br>TDZE <b>128</b><br>Apt Elev <b>128</b> |
|--|------------------------|--|

# RNAV (GPS) Y RWY 7R

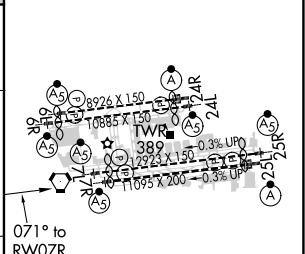
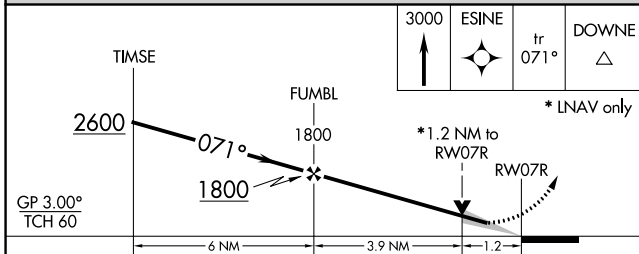
LOS ANGELES INTL (LAX)

|   |              |   |
|---|--------------|---|
| <p><b>▼</b> For uncompensated Baro-VNAV systems, LNAV/VNAV NA below 5°C (41°F) or above 54°C (130°F). DME/DME RNP-0.3 NA. Simultaneous approach authorized. LNAV procedure NA during simultaneous operations. Use of FD or AP providing RNAV track guidance required during simultaneous operations. # RVR 1800 authorized with use of FD or AP or HUD to DA.</p> | <p>MALSR</p> | <p>MISSED APPROACH: Climb to 3000 direct ESINE and on track 071° to DOWNE and hold.</p> |
|---|--------------|---|

|   |  |  |   |   |       |
|---|--|--|---|---|-------|
| D-ATIS<br>ARR <b>133.8</b><br>DEP <b>135.65</b> | SOCAL APP CON<br><b>124.3 363.2 124.9 269.0</b><br>(APCH FM WEST) (090°-224°)<br><b>124.5 235.975 128.5 360.7</b><br>(225°-044°) (045°-089°) | LOS ANGELES TOWER<br><b>N 133.9 239.3</b><br><b>S 120.95 379.1</b> | GND CON<br><b>N 121.65 327.0</b><br><b>S 121.75 327.0</b><br><b>W 121.4 327.0</b> | CLNC DEL<br><b>120.35</b><br><b>327.0</b> | CPDLC |
|---|--|--|---|---|-------|



|          |                   |
|----------|-------------------|
| ELEV 128 | <b>D</b> TDZE 128 |
|----------|-------------------|



|              |        |             |             |             |
|--------------|--------|-------------|-------------|-------------|
| CATEGORY     | A      | B           | C           | D           |
| LPV DA#      |        | 328/24      | 200 (200-½) |             |
| LNAV/VNAV DA |        | 462/30      | 334 (400-⅙) |             |
| LNAV MDA     | 560/24 | 432 (500-½) | 560/40      | 432 (500-¾) |

TDZ/CL Rwy 6R, 7L, 24R, and 25L  
HIRL all Rwy's

SW-3, 07 OCT 2021 to 04 NOV 2021

SW-3, 07 OCT 2021 to 04 NOV 2021