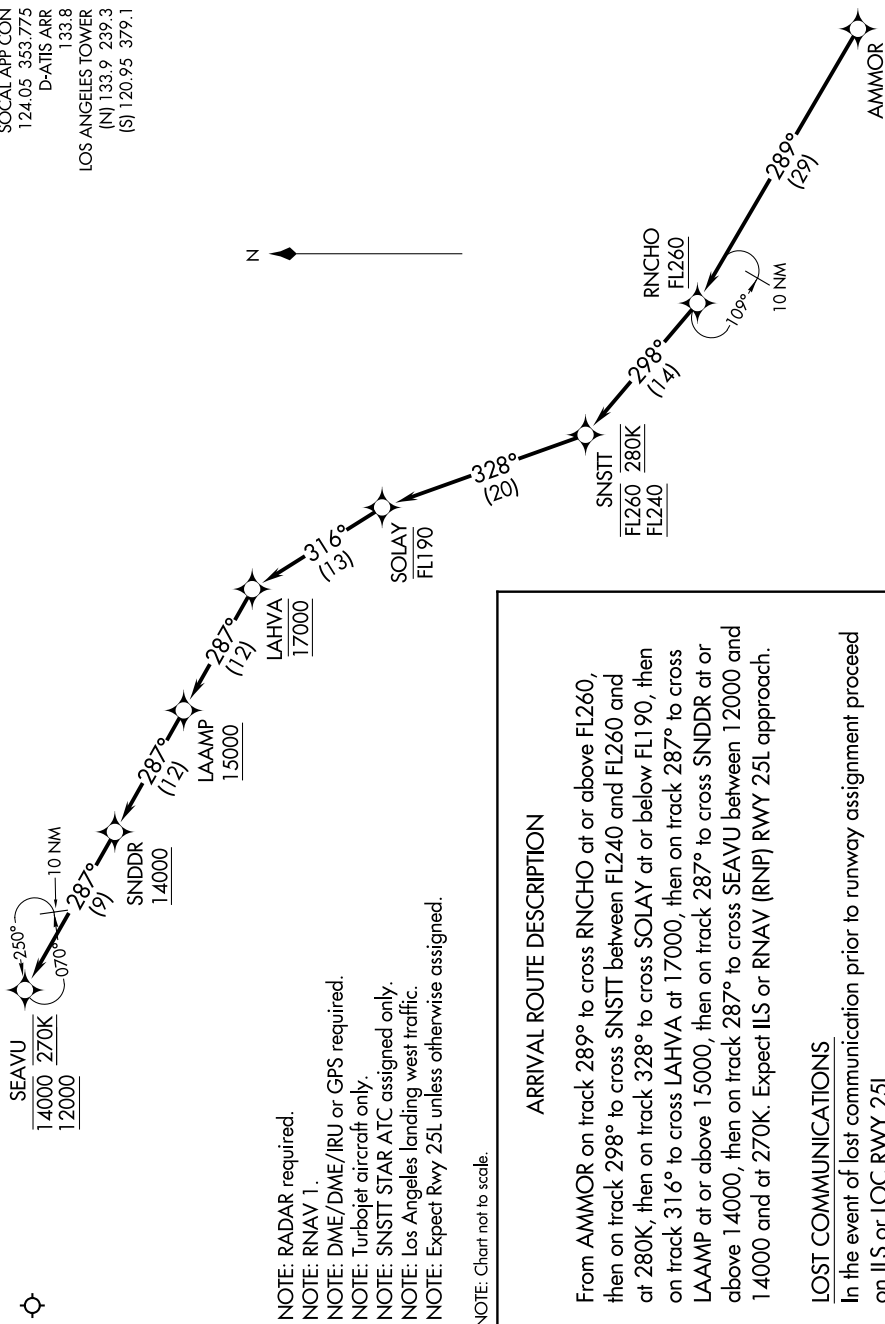


SOCAL APP CON
124.05 353.775
D-ATIS ARR
133.8
LOS ANGELES TOWER
(N) 133.9 239.3
(S) 120.95 379.1



SW-3, 07 OCT 2021 to 04 NOV 2021

- NOTE: RADAR required.
- NOTE: RNAV 1.
- NOTE: DME/DME/IRU or GPS required.
- NOTE: Turboprop aircraft only.
- NOTE: SNSTT STAR ATC assigned only.
- NOTE: Los Angeles landing west traffic.
- NOTE: Expect Rwy 25L unless otherwise assigned.

NOTE: Chart not to scale.

ARRIVAL ROUTE DESCRIPTION

From AMMOR on track 289° to cross RNCHO at or above FL260, then on track 298° to cross SNSTT between FL240 and FL260 and at 280K, then on track 328° to cross SOLAY at or below FL190, then on track 316° to cross LAHVA at 17000, then on track 287° to cross LAAMP at or above 15000, then on track 287° to cross SNDDR at or above 14000, then on track 287° to cross SEAVU between 12000 and 14000 and at 270K. Expect ILS or RNAV (RNP) RWY 25L approach.

LOST COMMUNICATIONS

In the event of lost communication prior to runway assignment proceed on ILS or LOC RWY 25L.

SW-3, 07 OCT 2021 to 04 NOV 2021