

(WNN DY3.WNN DY) 19003

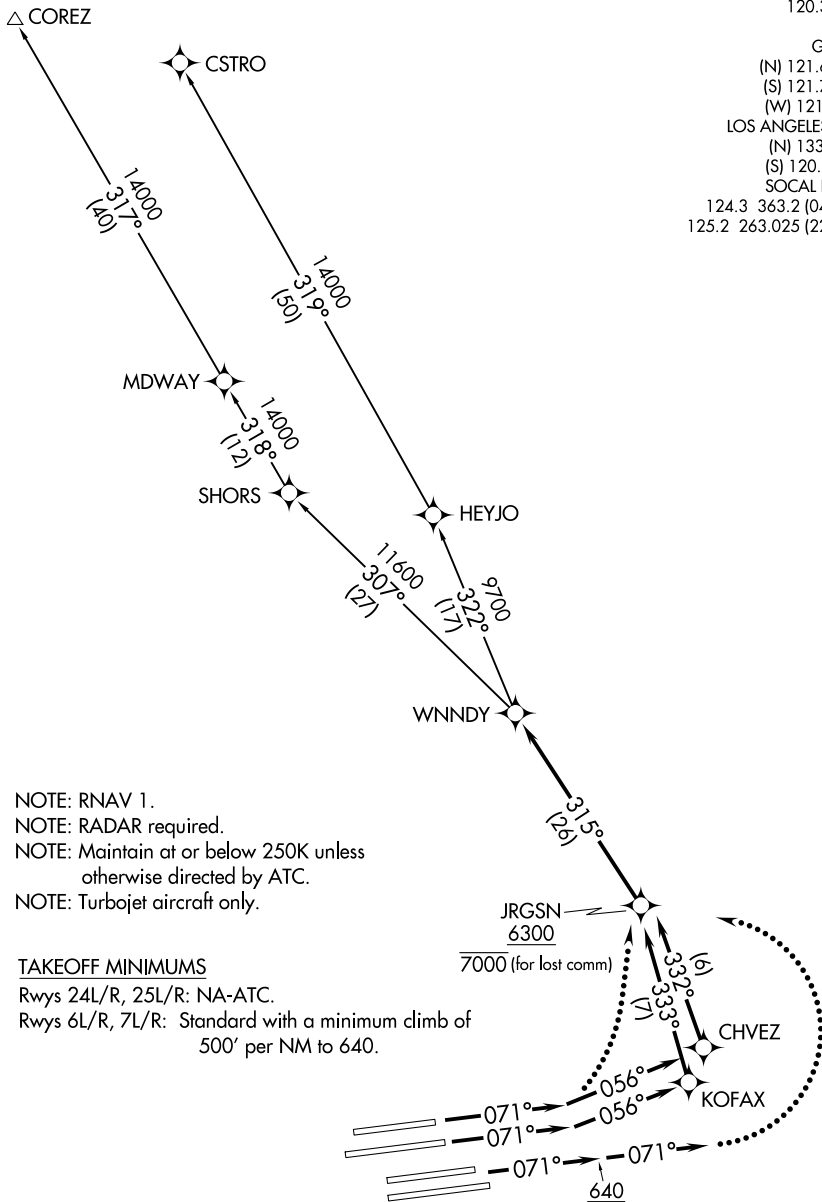
WNN DY THREE DEPARTURE (RNAV)

AL-237 (FAA)

LOS ANGELES INTL (LAX)
LOS ANGELES, CALIFORNIA

**TOP ALTITUDE:
FL230**

D-ATIS DEP	135.65
CLNC DEL	120.35 327.0
CPDLC	GND CON
(N) 121.65	327.0
(S) 121.75	327.0
(W) 121.4	327.0
LOS ANGELES TOWER	(N) 133.9 239.3
SOCAL DEP CON	(S) 120.95 379.1
124.3	363.2 (045°-224°)
125.2	263.025 (225°-044°)



NOTE: RNAV 1.
 NOTE: RADAR required.
 NOTE: Maintain at or below 250K unless otherwise directed by ATC.
 NOTE: Turbojet aircraft only.

TAKEOFF MINIMUMS

Rwys 24L/R, 25L/R: NA-ATC.
 Rwys 6L/R, 7L/R: Standard with a minimum climb of 500' per NM to 640.

(NARRATIVE ON FOLLOWING PAGE)

NOTE: Chart not to scale.

WNN DY THREE DEPARTURE (RNAV)

(WNN DY3.WNN DY) 03JAN19

LOS ANGELES, CALIFORNIA
LOS ANGELES INTL (LAX)

SW-3, 07 OCT 2021 to 04 NOV 2021

SW-3, 07 OCT 2021 to 04 NOV 2021