

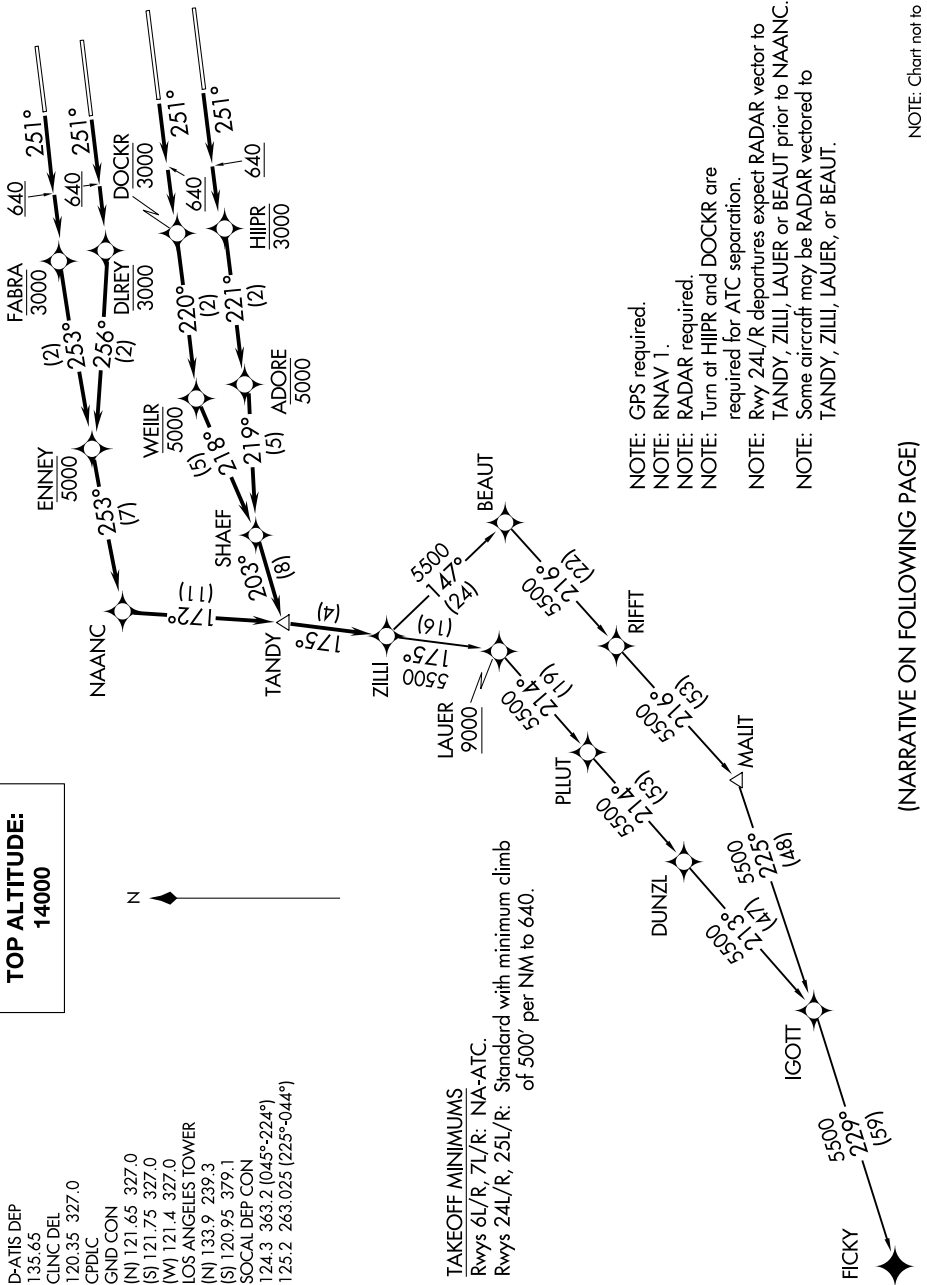
SW-3, 07 OCT 2021 to 04 NOV 2021

TOP ALTITUDE:
14000

- D-ATIS DEP 135.65
- CINC DEL 120.35 327.0
- CPDLC
- GND CON (N) 121.65 327.0
- (S) 121.75 327.0
- (M) 121.4 327.0
- LOS ANGELES TOWER (N) 133.9 379.1
- (S) 120.95 379.1
- SOCAL DEP CON 124.3 363.2 (045°-224°)
- 125.2 263.025 (225°-044°)



TAKEOFF MINIMUMS
 Rwy 6L/R, 7L/R: NA-ATC.
 Rwy 24L/R, 25L/R: Standard with minimum climb of 500' per NM to 640.



- NOTE: GPS required.
- NOTE: RNAV 1.
- NOTE: RADAR required.
- NOTE: Turn at HIIPR and DOCKR are required for ATC separation.
- NOTE: Rwy 24L/R departures expect RADAR vector to TANDY, ZILLI, LAUER or BEAUT prior to NAANC.
- NOTE: Some aircraft may be RADAR vectored to TANDY, ZILLI, LAUER, or BEAUT.

(NARRATIVE ON FOLLOWING PAGE)

NOTE: Chart not to scale.

SW-3, 07 OCT 2021 to 04 NOV 2021