

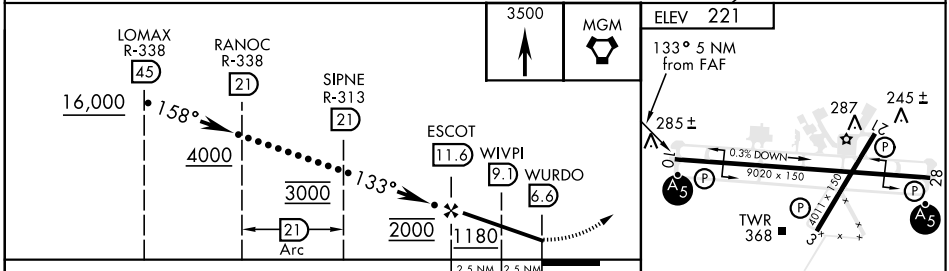
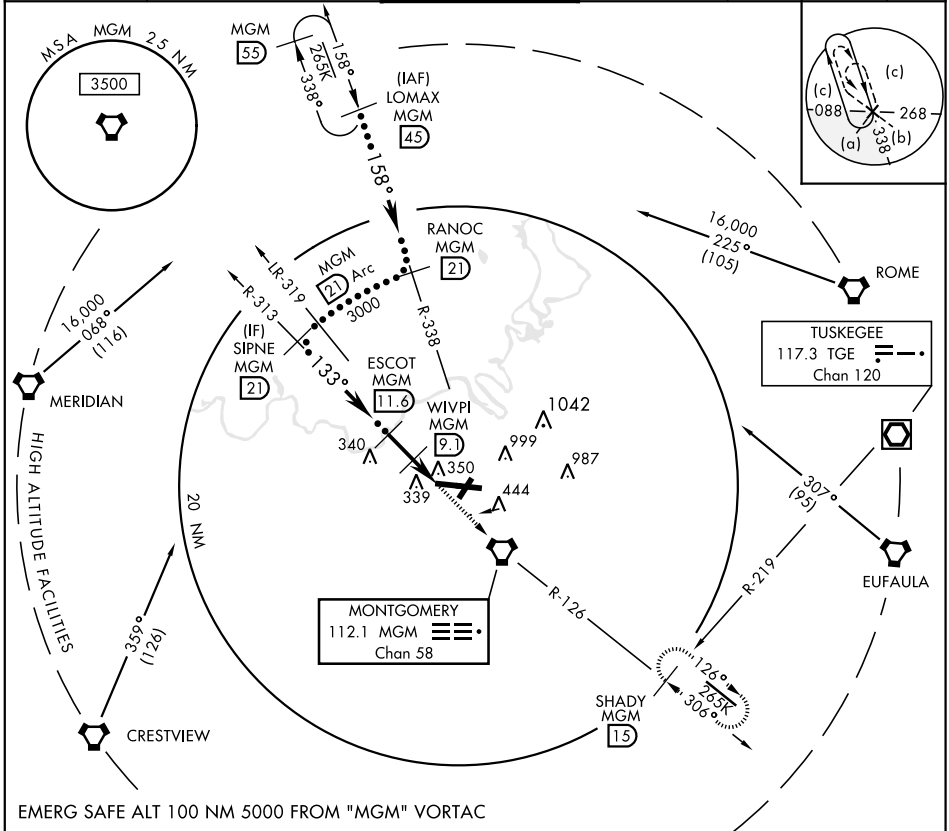
MONTGOMERY, ALABAMA

# HI-TACAN-A

VORTAC MGM <b>112.1</b> Chan <b>58</b>	APCH CRS <b>133°</b>	Rwy ldg THRE Arprt Elev <b>N/A</b> <b>N/A</b> <b>221</b>	JAL-272 [USAF] MONTGOMERY REGIONAL (DANNELLY FIELD) (KMGM)
--	-------------------------	---	---

\* Circling not authorized for CAT E N of Rwy 10-28.  
MISSED APPROACH: Climb to 3500 direct MGM VORTAC and on MGM R-126 to SHADY INT/15 DME and hold.

ATIS ★ <b>120.675</b>	MONTGOMERY APP CON <b>124.0 363.025</b>	MONTGOMERY TOWER ★ <b>119.7(CTAF) 0360.85</b>	GND CON <b>121.7 348.6</b>	CLNC DEL <b>118.3 270.3</b>	ASR ASOS
--------------------------	--	--	-------------------------------	--------------------------------	-------------



CATEGORY	C	D	E
CIRCLING*	800-1½ 579 (600-1½)	860-2 639 (700-2)	860-2¼ 639 (700-2¼)

HIRL Rwy 10-28  
MIRL Rwy 3-21  
REIL Rwy 3

MONTGOMERY, ALABAMA 32°18'N-86°24'W MONTGOMERY REGIONAL (DANNELLY FIELD) (KMGM)  
Amdt 4B 21JUL16

# HI-TACAN-A

SE-4, 07 OCT 2021 to 04 NOV 2021

SE-4, 07 OCT 2021 to 04 NOV 2021