

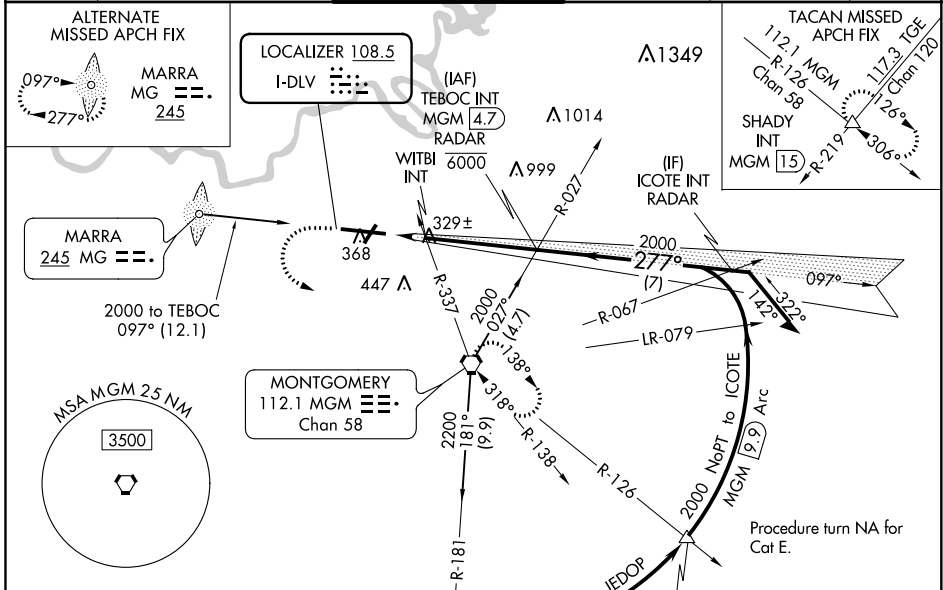
LOC I-DLV	APP CRS	Rwy Idg	9020
108.5	277°	TDZE	197
		Apt Elev	221

ILS Y or LOC RWY 28

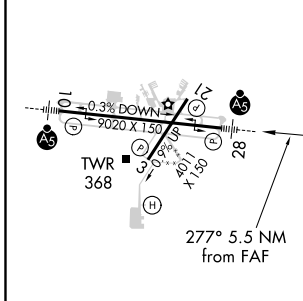
MONTGOMERY RGNL (DANNELLY FLD) (MGM)

<p>▽ For inop MALSR, increase S-ILS 28 Cat E visibility to ¾ mile; increase S-LOC 28 Cats C/D/E visibility to 1 ⅜ mile; increase WITBI fix minimums S-LOC 28 Cat E visibility to 1 ¼ mile. Circling for Cat E NA north of Rwy 10-28.</p> <p>△ ASR</p>	<p>MALSR</p>	<p>MISSED APPROACH: Climb to 700 then climbing left turn to 3000 direct MGM VORTAC and hold, continue climb-in-hold to 3000 (TACAN aircraft continue climb to 3500 on MGM VORTAC R-126 to SHADY INT/MGM 15 DME and hold SE, RT, 306° inbound).</p>
---	--------------	--

ATIS	MONTGOMERY APP CON *	DANNELLY TOWER *	GND CON	CLNC DEL	UNICOM
120.675	124.0 363.025	119.7 (CTAF) 0 360.85	121.7 348.6	118.3 270.3	122.95



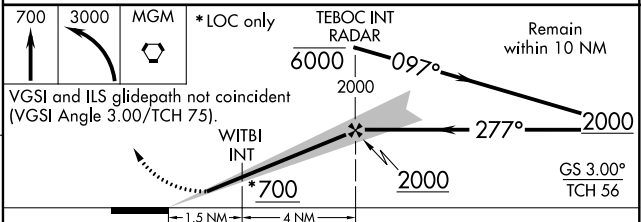
ELEV	221	TDZE	197
------	-----	------	-----



REIL Rwy 3 **0**
 MIRL Rwy 3-21
 HIRL Rwy 10-28

FAF to MAP 5.5 NM

Knots	60	90	120	150	180
Min:Sec	5:30	3:40	2:45	2:12	1:50



CATEGORY	A	B	C	D	E
S-ILS 28	397-1/2		200 (200-1/2)		
S-LOC 28	700-1/2	503 (500-1/2)	700-1	503 (500-1)	
C CIRCLING	700-1	479 (500-1)	800-1-1/2 579 (600-1-1/2)	860-2 639 (700-2)	860-2-1/4 639 (700-2-1/4)
WITBI FIX MINIMUMS					
S-LOC 28	620-1/2	423 (400-1/2)	620-3/4	423 (400-3/4)	
C CIRCLING	700-1	479 (500-1)	800-1-1/2 579 (600-1-1/2)	860-2 639 (700-2)	860-2-1/4 639 (700-2-1/4)

SE-4, 07 OCT 2021 to 04 NOV 2021

SE-4, 07 OCT 2021 to 04 NOV 2021