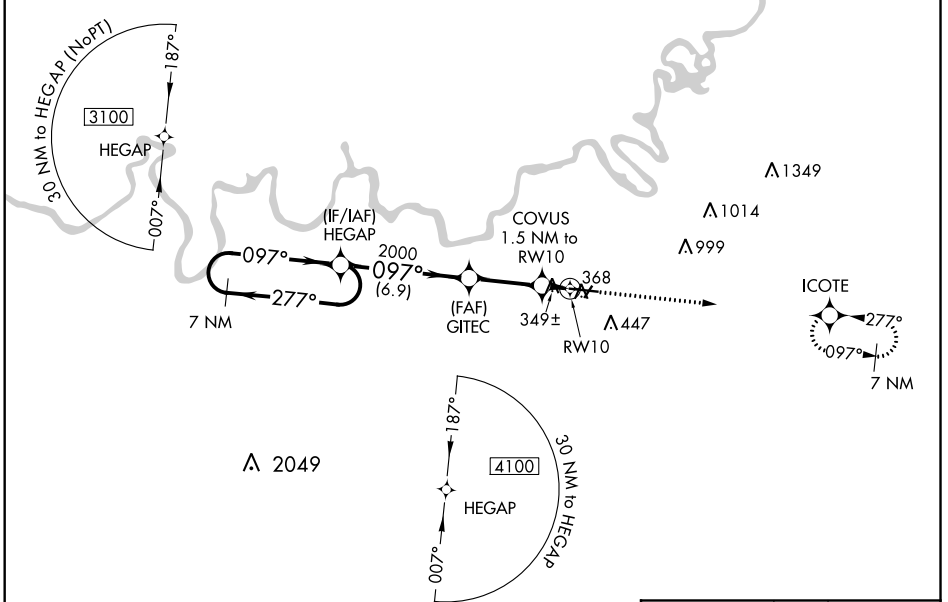


WAAS CH <b>50100</b> W <b>10A</b>	APP CRS <b>097°</b>	Rwy Idg TDZE Apt Elev	<b>9020</b> <b>219</b> <b>221</b>
---	------------------------	-----------------------------	---

# RNAV (GPS) RWY 10

MONTGOMERY RGNL (DANNELLY FLD) (MGM)

RNP APCH.		DANNELLY TOWER ★		GND CON	CLNC DEL	UNICOM
▼ For uncompensated Baro-VNAV systems, LNAV/VNAV NA below -8°C (18°F) or above 54°C (130°F). For inop MALSRL, increase LPV Cat E visibility to RVR 4000; increase LNAV/VNAV Cat E visibility to RVR 5000; increase LNAV Cats C/D/E visibility to 1½ mile. Circling for Cat E NA north of Rwy 10-28. ⚠ ASR **RVR 1800 authorized with use of FD or AP or HUD to DA.		★ <b>119.7 (CTAF) 0 360.85</b>		<b>121.7 348.6</b>	<b>118.3 270.3</b>	<b>122.95</b>
ATIS	MONTGOMERY APP CON ★					
<b>120.675</b>	<b>124.0 363.025</b>					



ELEV 221		TDZE 219			
VGSi and RNAV glidepath not coincident (VGSi Angle 3.00/TCH 64). 7 NM Holding Pattern HEGAP 3100 ← 277° / 097° → GP 3.00° TCH 50		2000 GITEC 2000 *740 1.5 NM to RWY 10 COVUS *1 NM to RWY 10 RWY 10 368 *LNAV only.			
6.9 NM 3.9 NM 0.5 NM 1 NM		2600 ICOTE 0.3% DOWN 9020 X 150 401 X 150 TWR 368 097° to RWY 10			
CATEGORY	A	B	C	D	E
LPV DA **	419/24		200 (200-½)		
LNAV/VNAV DA	530/24		311 (400-½)		
LNAV MDA	600/24	381 (400-½)	600/35	381 (400-¾)	
CIRCLING	700-1	479 (500-1)	800-1½ 579 (600-1½)	860-2 639 (700-2)	860-2¼ 639 (700-2¼)

REIL Rwy 3  
MIRL Rwy 3-21  
HIRL Rwy 10-28

SE-4, 07 OCT 2021 to 04 NOV 2021

SE-4, 07 OCT 2021 to 04 NOV 2021