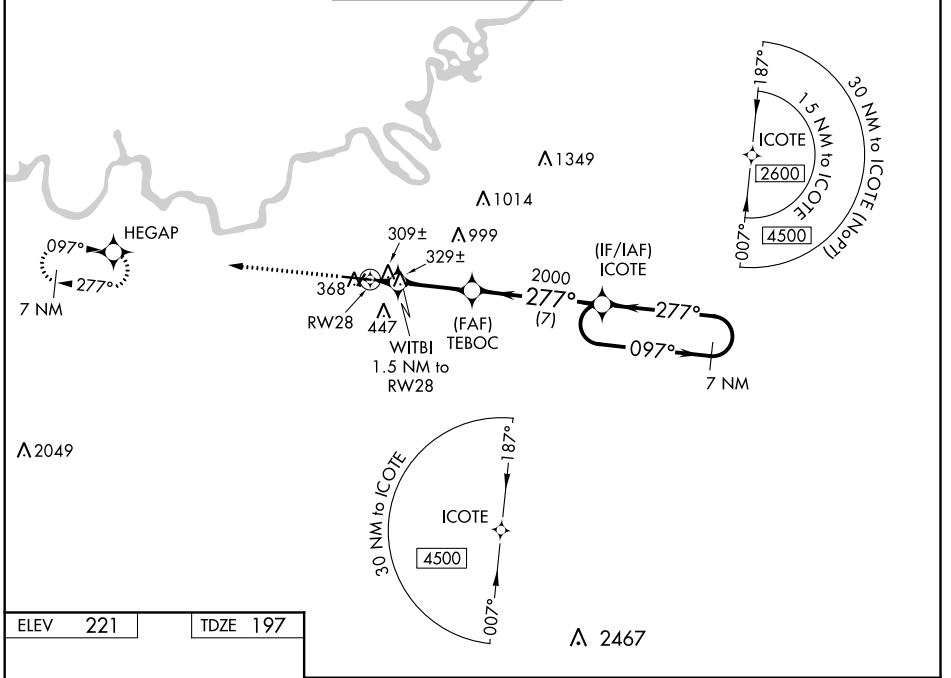


WAAS CH 56200 W28A	APP CRS 277°	Rwy Idg TDZE Apt Elev	9020 197 221
--	------------------------	-----------------------------	---

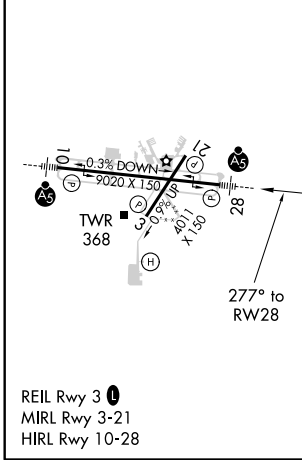
RNAV (GPS) RWY 28
MONTGOMERY RGNL (DANNELLY FLD) (MGM)

<p>⚠ For uncompensated Baro-VNAV systems, LNAV/VNAV NA below -8°C (18°F) or above 54°C (130°F). DME/DME RNP-0.3 NA. For inop MALSR, increase LPV Cat E visibility to ¾ mile; increase LNAV/VNAV Cat E visibility to 1⅓ mile; increase LNAV Cat E visibility to 1⅓ mile. Circling for Cat E NA north of Rwy 10-28.</p>	<p>MALSR</p>	<p>MISSED APPROACH: Climb to 3100 direct HEGAP and hold.</p>
	<p>ASR</p>	

ATIS 120.675	MONTGOMERY APP CON * 124.0 363.025	DANNELLY TOWER * 119.7 (CTAF) 0 360.85	GND CON 121.7 348.6	CLNC DEL 118.3 270.3	UNICOM 122.95
------------------------	--	--	-------------------------------	--------------------------------	-------------------------



ELEV 221	TDZE 197
----------	----------



3100	HEGAP	VGSI and RNAV glidepath not coincident (VGSI Angle 3.00/TCH 75).	7 NM Holding Pattern	
* LNAV only	WITBI	TEBOC	ICOTE	
	1.5 NM to RWY 28	2000	2600	
	* 1 NM to RWY 28	720*	2000	
	1 NM	0.5	4 NM	7 NM
			GP 3.00°	TCH 56

CATEGORY	A	B	C	D	E
LPV DA	397-½		200 (200-½)		
LNAV/VNAV DA	606-⅞		409 (400-⅞)		
LNAV MDA	580-½ 383 (400-½)		580-⅝ 383 (400-⅝)		
C CIRCLING	700-1 479 (500-1)		800-1½ 579 (600-1½)	860-2 639 (700-2)	860-2¼ 639 (700-2¼)

SE-4, 07 OCT 2021 to 04 NOV 2021

SE-4, 07 OCT 2021 to 04 NOV 2021