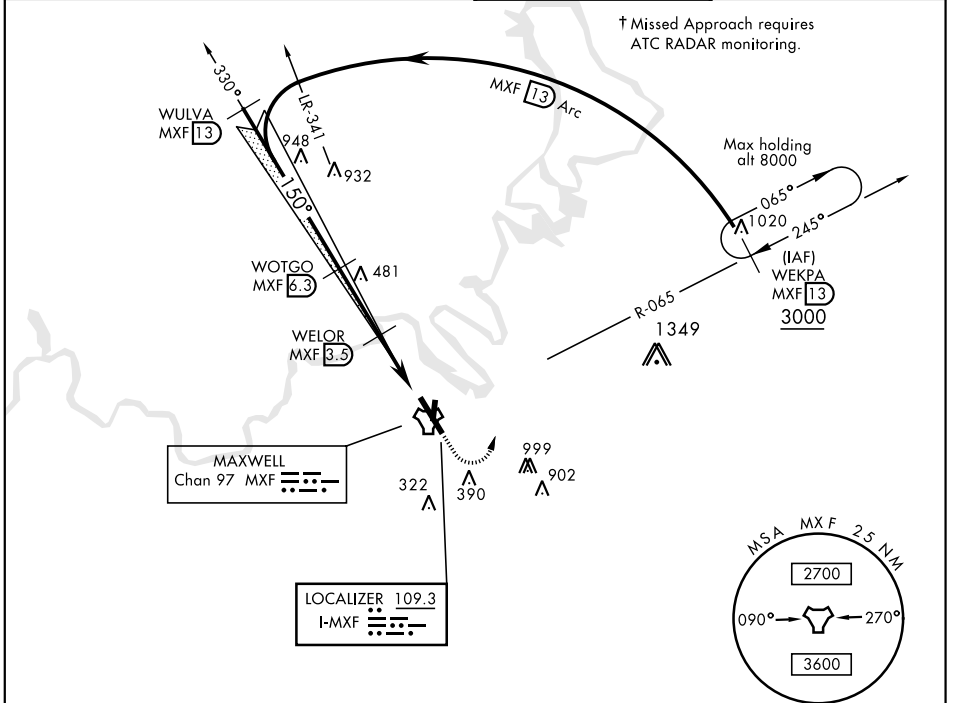


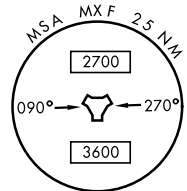
IIS or LOC/DME RWY 15

LOC I-MXF 109.3	APCH CRS 150°	Rwy ldg TDZE Arprt Elev	8008 171 171	AL-274 [USAF]	MAXWELL AFB (KMXF)
▼ * When ALS inop, increase RVR to 40 and vis to ¼ mile. ** When ALS inop, increase CAT AB RVR to 55 and vis to 1 mile, CAT CDE RVR to 60 and vis to 1½ mile. *** Circling not authorized E of Rwy 15-33.				ALSF-1 	† MISSED APPROACH: Climb to 1000, then climbing left turn to 3000 to intercept MXF TACAN R-065 outbound to 13 DME (WEKPA) and hold.

ATIS * 134.7 269.9	MONTGOMERY APP CON 121.2 269.05	MAXWELL TOWER * 118.15 253.5	GND CON 127.15 289.4
-------------------------------------	--	---	---------------------------------------



† Missed Approach requires ATC RADAR monitoring.



EMERG SAFE ALT 100 NM 5000

VGSI and descent angle not coincident	1000	3000	WEKPA R-065	ELEV 171	TDZE 171
WULVA 13 3000 150° 2000 WOTGO 6.3 WELOR 3.5 TACAN WODUM 1.2 1100 2.8 NM, 2.3 NM, 1.5 NM					
GS 3.00° TCH 51 150° 5.5 NM from FAF LANDING ZONE 3015, 3000, 2985, 2970, 2955, 2940, 2925, 2910, 2895, 2880, 2865, 2850, 2835, 2820, 2805, 2790, 2775, 2760, 2745, 2730, 2715, 2700, 2685, 2670, 2655, 2640, 2625, 2610, 2595, 2580, 2565, 2550, 2535, 2520, 2505, 2490, 2475, 2460, 2445, 2430, 2415, 2400, 2385, 2370, 2355, 2340, 2325, 2310, 2295, 2280, 2265, 2250, 2235, 2220, 2205, 2190, 2175, 2160, 2145, 2130, 2115, 2100, 2085, 2070, 2055, 2040, 2025, 2010, 2000					
CATEGORY	A	B	C	D	E
S-ILS 15 *	371/24		200	(200-½)	
S-LOC 15 **	560/24	389	560/35		389 (400-¾)
CIRCLING ***	680-1	509 (600-1)	740-1½	940-2½	NA
			569 (600-1½)	769 (800-2½)	

HIRL Rwy 15-33

IIS or LOC/DME RWY 15

SE-4, 07 OCT 2021 to 04 NOV 2021

SE-4, 07 OCT 2021 to 04 NOV 2021