

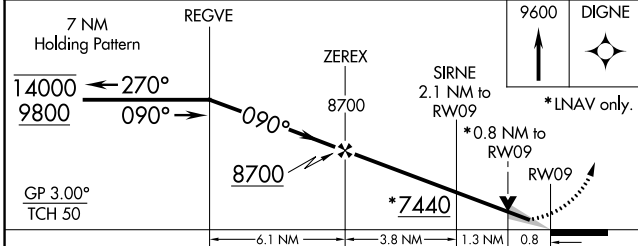
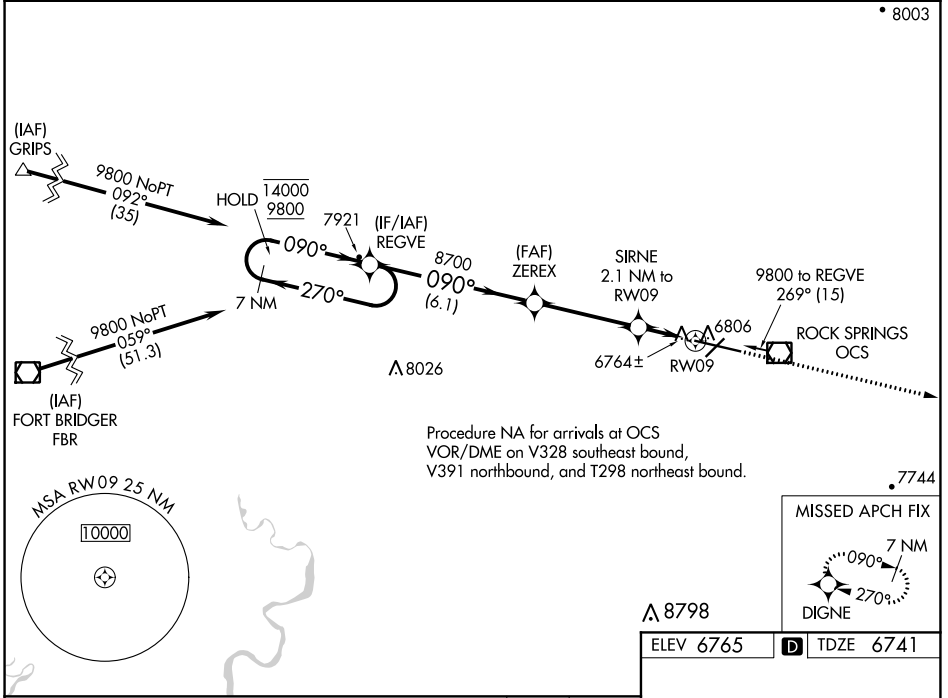
WAAS CH <b>66016</b> W09A	APP CRS <b>090°</b>	Rwy Idg <b>10000</b> TDZE <b>6741</b> Apt Elev <b>6765</b>
---------------------------------	------------------------	--

# RNAV (GPS) RWY 9

SOUTHWEST WYOMING RGNL (R.K.S)

RNP APCH.	ODALS	MISSED APPROACH: Climb to 9600 direct DIGNE and hold.
<p>▼ For uncompensated Baro-VNAV systems, LNAV/VNAV NA below -28°C or above 45°C.</p> <p>▲</p>		

ASOS <b>118.375</b>	SALT LAKE CENTER <b>124.35 353.5</b>	UNICOM <b>122.8 (CTAF) 0</b>
------------------------	---	---------------------------------



ELEV 6765	TDZE 6741
-----------	-----------

CATEGORY	A	B	C	D
LPV DA	6941-¾ 200 (200-¾)			
LNAV/VNAV DA	7034-¾ 293 (300-¾)			
LNAV MDA	7040-¾ 299 (300-¾)			7040-1 299 (300-1)
CIRCLING	7140-1 375 (400-1)	7220-1 455 (500-1)	7220-1½ 455 (500-1½)	7540-2½ 775 (800-2½)

MIRL Rwy 3-21

HIRL Rwy 9-27 0

REIL Rws 3 and 21 0

NW-1, 07 OCT 2021 to 04 NOV 2021

NW-1, 07 OCT 2021 to 04 NOV 2021