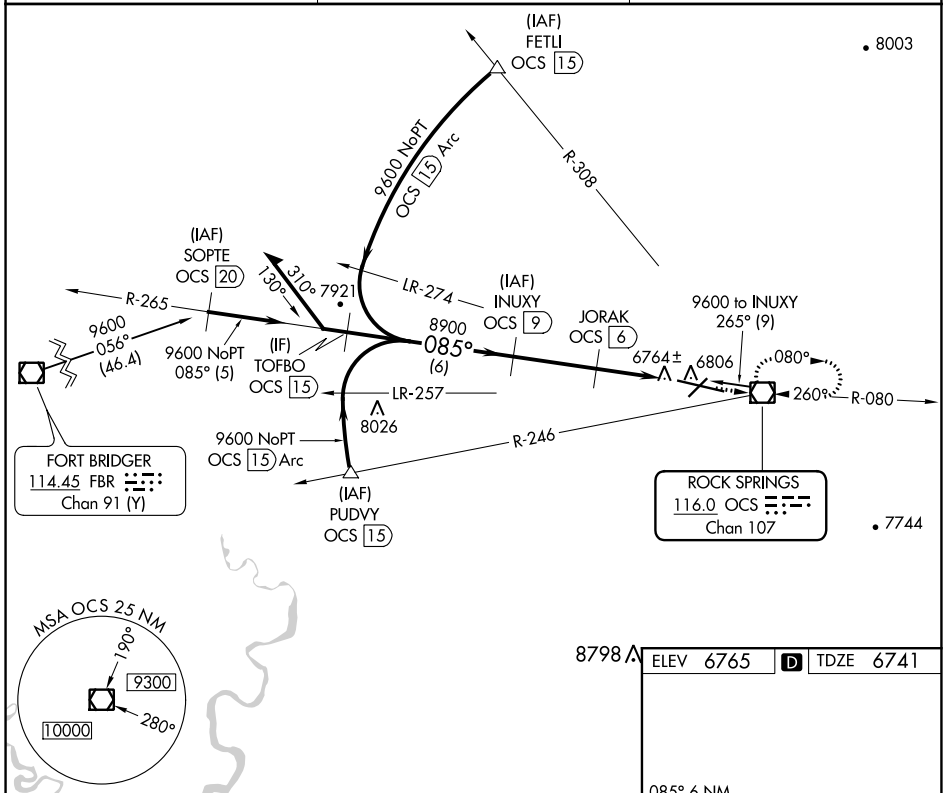


VOR/DME OCS <b>116.0</b> Chan <b>107</b>	APP CRS <b>085°</b>	Rwy Idg <b>10000</b> TDZE <b>6741</b> Apt Elev <b>6765</b>
--	------------------------	--

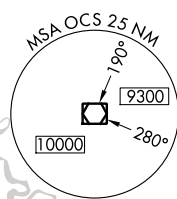
**VOR RWY 9**  
SOUTHWEST WYOMING RGNL (R.K.S)

DME required.		ODALS	MISSED APPROACH: Climb to 9300 direct OCS VOR/DME and hold, continue climb-in-hold to 9300.
ASOS <b>118.375</b>	SALT LAKE CENTER <b>124.35 353.5</b>	UNICOM <b>122.8 (CTAF) 0</b>	

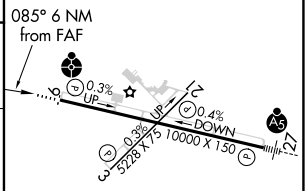
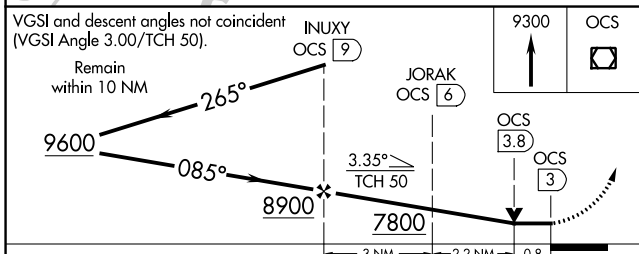


**FORT BRIDGER**  
114.45 FBR  
Chan 91 (Y)

**ROCK SPRINGS**  
116.0 OCS  
Chan 107



8798 A ELEV 6765 TDZE 6741



CATEGORY	A	B	C	D
S-9	7020-3/4 279 (300-3/4)			7020-1 279 (300-1)
CIRCLING	7140-1 375 (400-1)	7220-1 455 (500-1)	7220-1 1/2 455 (500-1 1/2)	7540-2 1/2 775 (800-2 1/2)

MIRL Rwy 3-21  
HIRL Rwy 9-27  
REIL Rws 3 and 21

NW-1, 07 OCT 2021 to 04 NOV 2021

NW-1, 07 OCT 2021 to 04 NOV 2021