

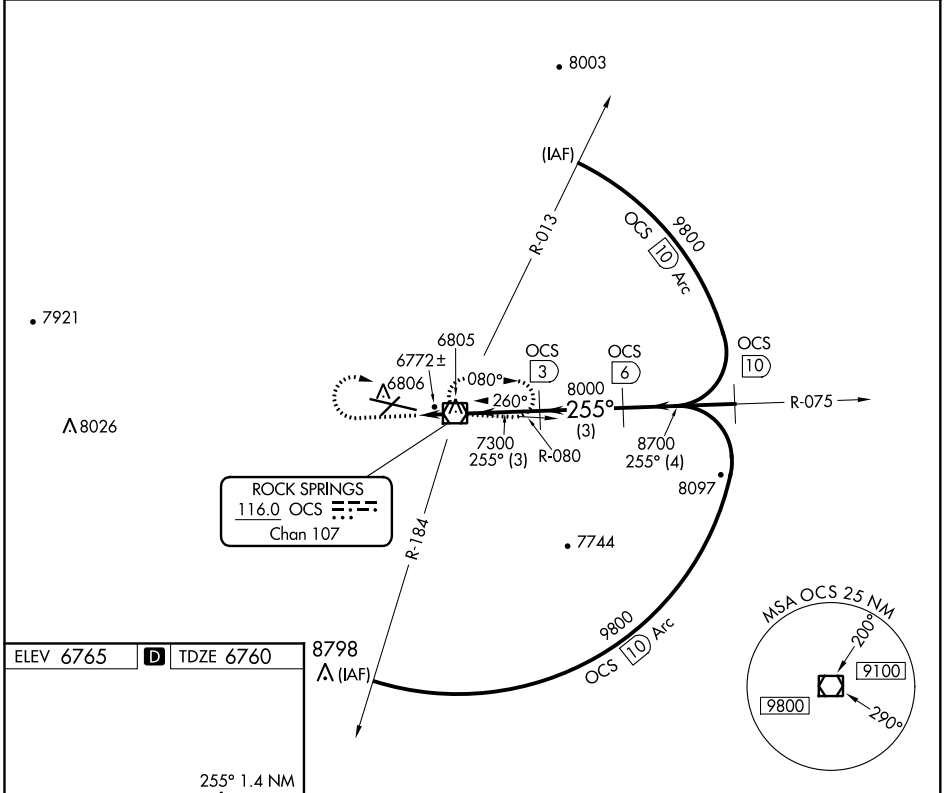
VOR/DME OCS <b>116.0</b> Chan <b>107</b>	APP CRS <b>255°</b>	Rwy Idg TDZE Apt Elev	<b>10000</b> <b>6760</b> <b>6765</b>
--	------------------------	-----------------------------	--

# VOR/DME RWY 27

SOUTHWEST WYOMING RGNL (R.K.S)

<p><b>▼</b> Inoperative table does not apply to Cat D.</p>	<p>MALS R</p>	<p>MISSED APPROACH: Climb to 7700, then climbing right turn to 9100 direct OCS VOR/DME and hold.</p>
--	---------------	--

<p>ASOS <b>118.375</b></p>	<p>SALT LAKE CENTER <b>124.35 353.5</b></p>	<p>UNICOM <b>122.8</b> (CTAF) <b>①</b></p>
--------------------------------	---	--



ELEV 6765	<b>D</b>	TDZE 6760
-----------	----------	-----------

8798  
△ (IAF)

255° 1.4 NM from FAF

MIRL Rwy 3-21  
HIRL Rwy 9-27 **①**  
REL Rwy 3 and 21 **①**

	7700	9100	OCS		OCS	OCS	OCS
	↑	↷	□		③	⑥	⑩
	OCS VOR/DME				③	⑥	⑩
	7300	8000	8700	9800			
	1.4 NM	3 NM	3 NM	4 NM			
CATEGORY	A	B	C	D			
S-27	7040-½ 280 (300-½)			7040-1 280 (300-1)			
<b>C</b> CIRCLING	7140-1 375 (400-1)	7220-1 455 (500-1)	7220-1½ 455 (500-1½)	NA			

Procedure Turn NA

NW-1, 07 OCT 2021 to 04 NOV 2021

NW-1, 07 OCT 2021 to 04 NOV 2021