

ROSWELL, NEW MEXICO

# HI-ILS or LOC RWY 21

LOC/DME I-ROW <b>109.9</b> Chan <b>36</b>	APCH CRS <b>215°</b>	Rwy Idg <b>13,001</b> TDZE <b>3633</b> Arprt Elev <b>3671</b>
---	-------------------------	---

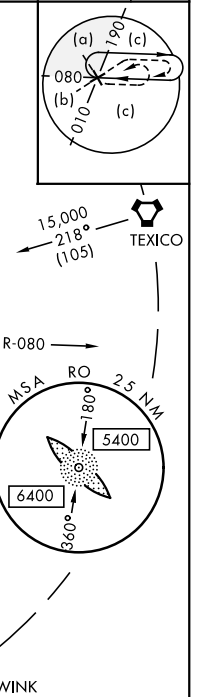
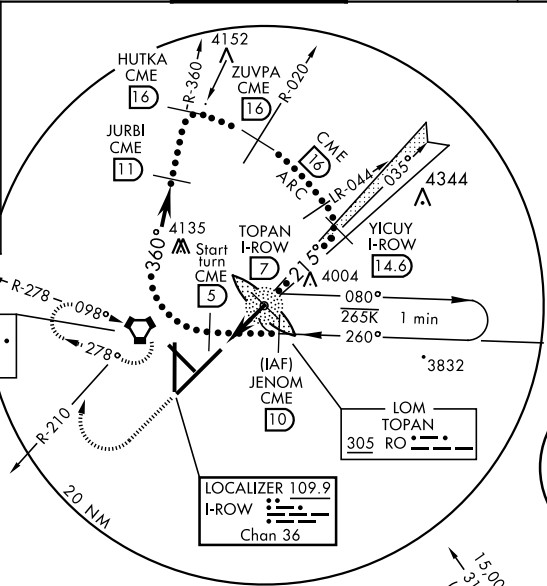
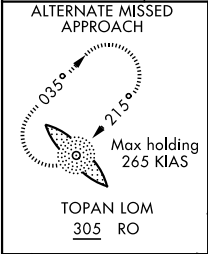
JAL-354 [USAF]

ROSWELL AIR CENTER (KROW)

\* When ALS inop, increase CAT E vis to 3/4 mile.  
 \*\* When ALS inop, increase CAT E vis to 1 1/8 miles.

**MALS R** MISSED APPROACH: Climb to 5000 then climbing right turn to 6500 on CME VORTAC R-210 to CME and hold.

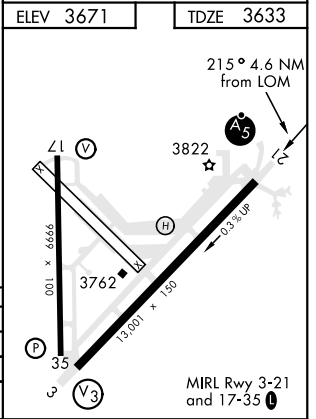
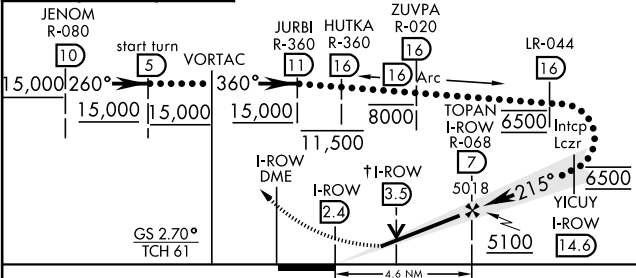
ATIS <b>128.45 306.2</b>	ROSWELL APP CON <b>119.6 239.0</b>	ROSWELL TOWER ★ <b>118.5 (CTAF) 0 233.7</b>	GND CON <b>121.9 348.6</b>	CLNC DEL <b>132.875 282.25</b>	ASR
-----------------------------	---------------------------------------	--	-------------------------------	-----------------------------------	-----



## DME REQUIRED

EMERG SAFE ALT 100 NM 14,300

5000	6500	CME	Use I-ROW DME when on localizer course.	† For Localizer use only.



CATEGORY	C	D	E
S-ILS 21 *	3833-1/2	200	(200-1/2)
S-LOC 21 **	4020-5/8	396	(400-3/8)
CIRCLING	4140-1 1/2 469 (500-1 1/2)	4240-2 569 (600-2)	4360-2 1/2 689 (700-2 1/2)

ROSWELL, NEW MEXICO

33°18'N-104°32'W

ROSWELL AIR CENTER (KROW)

Amdt 8A 21MAY20

# HI-ILS or LOC RWY 21

SW-1, 07 OCT 2021 to 04 NOV 2021

SW-1, 07 OCT 2021 to 04 NOV 2021