

LOC/DME I-ROW 109.9 Chan 36	APP CRS 215°	Rwy Idg 13001 TDZE 3633 Apt Elev 3671
--	------------------------	--

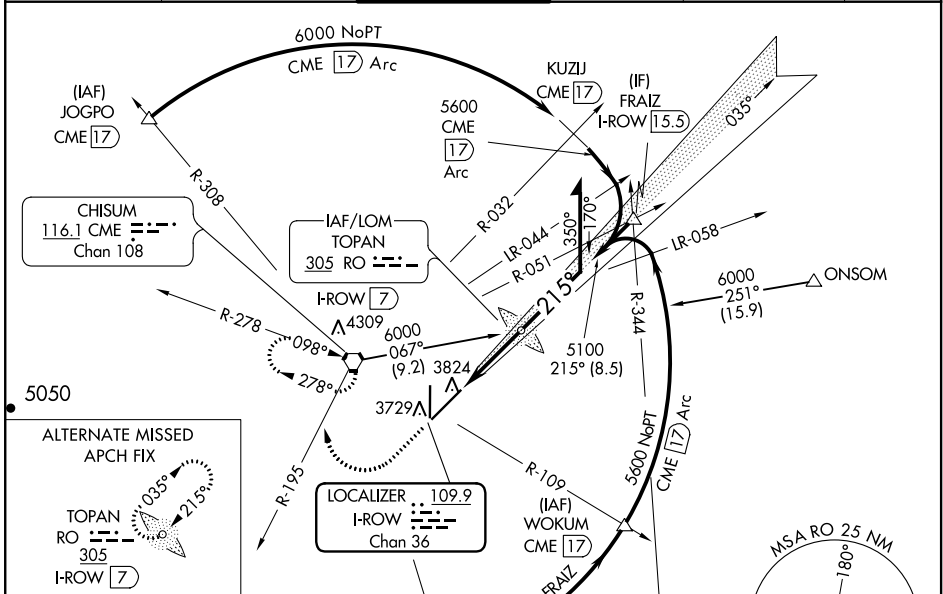
ILS or LOC RWY 21

ROSWELL AIR CENTER (ROW)

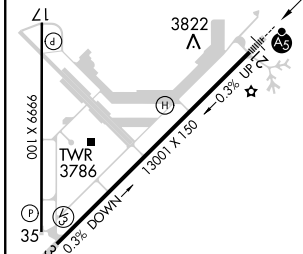
NA When local altimeter setting not received, use Artesia altimeter setting and increase all DA 84 feet and all MDA 100 feet; increase LOC Cats C and D visibility 3/8 mile. For inoperative MALSRR when using Artesia altimeter setting, increase ILS all Cats visibility to 1 and LOC Cats C and D to 1/8. VDP NA when using Artesia altimeter setting.

MALSRR MISSED APPROACH: Climb to 5000 then climbing right turn to 6000 on CME VORTAC R-195 to CME VORTAC and hold.

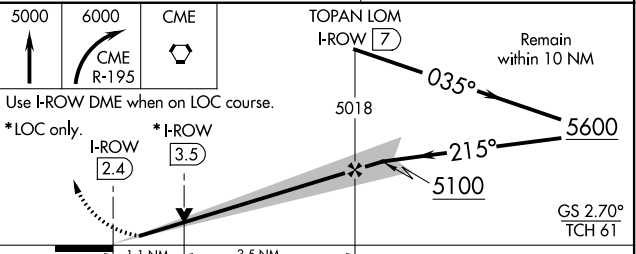
ATIS 128.45 306.2	ROSWELL APP CON* 119.6 239.0	ROSWELL TOWER* 118.5 (CTAF) 233.7	GND CON 121.9 348.6	CLNC DEL 132.875 282.25	UNICOM 122.95
-----------------------------	--	---	-------------------------------	-----------------------------------	-------------------------



ELEV 3671	D	TDZE 3633
-----------	----------	-----------



ADF or DME REQUIRED



CATEGORY	A	B	C	D
S-ILS 21	3833-1/2 200 (200-1/2)			
S-LOC 21	4020-1/2 387 (400-1/2)		4020-5/8 387 (400-5/8)	
CIRCLING	4140-1 469 (500-1)		4140-1 1/2 469 (500-1 1/2) 4240-2 569 (600-2)	

SW-1, 07 OCT 2021 to 04 NOV 2021

SW-1, 07 OCT 2021 to 04 NOV 2021