

WAAS CH 69302 W21A	APP CRS 215°	Rwy Idg 13001 TDZE 3633 Apt Elev 3671
--	------------------------	--

RNAV (GPS) RWY 21

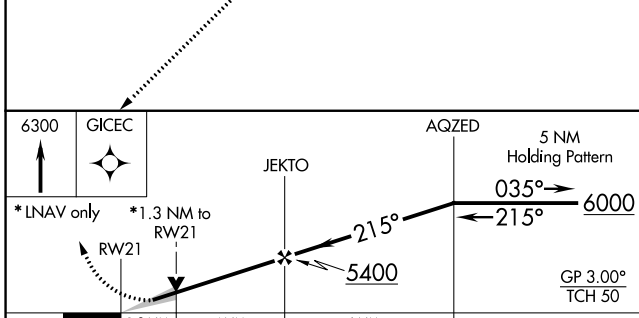
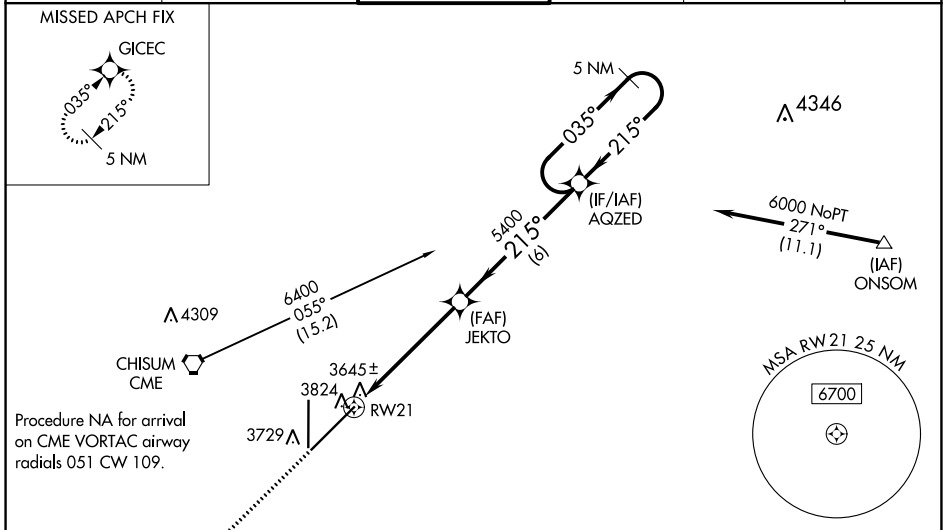
ROSWELL AIR CENTER (ROW)

RNP APCH-GPS

ASR For uncompensated Baro-VNAV systems, LNAV/VNAV NA below -22°C or above 41°C. When local altimeter setting not received, use Artesia altimeter setting: increase LPV DA to 3999 and all visibilities 1/8 SM; increase LNAV/VNAV DA to 4095 feet and all visibilities 3/8 SM; increase all MDAs 100 feet and LNAV Cats C/D visibility 1/4 SM, and Circling Cat C visibility 1/8 SM. VDP and Baro-VNAV NA when using Artesia altimeter setting. For inop ALS, increase LPV all Cats visibility to 3/8 SM, and LNAV/VNAV all Cats visibility to 1 SM. For inop ALS when using Artesia altimeter setting, increase LPV all Cats visibility to 1 SM and LNAV/VNAV all Cats visibility to 1 3/8 SM.

MALSIR MISSED APPROACH: Climb to 6300 direct GICEC and hold.

ATIS 128.45 306.2	ROSWELL APP CON * 119.6 239.0	ROSWELL TOWER * 118.5(CTAF) 233.7	GND CON 121.9 348.6	CLNC DEL 132.875 282.25	UNICOM 122.95
-----------------------------	---	---	-------------------------------	-----------------------------------	-------------------------



CATEGORY	A	B	C	D
LPV DA	3899-1/2		266 (300-1/2)	
LNAV/VNAV DA	3995-5/8		362 (400-3/8)	
LNAV MDA	4080-1/2 447 (500-1/2)		4080-7/8 447 (500-7/8)	
CIRCLING	4140-1 1/4 469 (500-1 1/4)		4140-1 1/2 469 (500-1 1/2) 4240-2 569 (600-2)	

ELEV 3671 TDZE 3633

3753 Z1

3822 A

3786 TWR

001 X 6666

0.3% DOWN

215° to RWY 21

MIRL Rwy 3-21

MIRL Rwy 17-35

SW-1, 07 OCT 2021 to 04 NOV 2021

SW-1, 07 OCT 2021 to 04 NOV 2021