

LOC/DME I-OGZ 111.95 Chan 56(Y)	APP CRS 123°	Rwy ldg TDZE Apt Elev	9001 618 618
--	------------------------	-----------------------------	---

ILS or LOC RWY 11

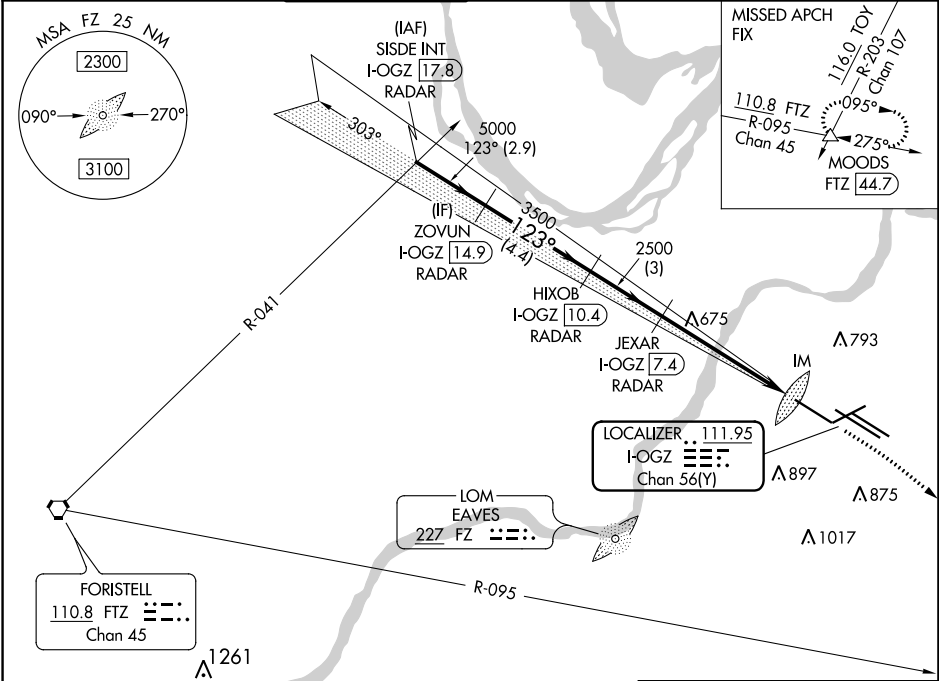
ST LOUIS LAMBERT INTL (STL)

RADAR required for procedure entry. DME or RADAR required.
 ▼ Simultaneous approach authorized with Rwy 12R/L. Disregard OM signal associated with ILS to Rwy 12R. For inop ALS, increase S-ILS Cat E visibility to RVR 4000, and S-LOC Cat C/D/E visibility to RVR 5500.



MISSED APPROACH: Climb to 1060 then climbing right turn to 3000 on heading 130° and FTZ R-095 to MOODS INT/FTZ 44.7 DME and hold.

D-ATIS 125.025 379.925	ST. LOUIS APP CON 132.125 360.6	ST. LOUIS TOWER 132.475 239.275	GND CON 121.9 348.6 (Inbound) 121.65 377.175 (Outbound) 118.925 227.125 (Rwy 11/29)	CLNC DEL 119.5 363.1	CPDLC
--	---	---	---	--------------------------------	-------



NC-3, 07 OCT 2021 to 04 NOV 2021

NC-3, 07 OCT 2021 to 04 NOV 2021

VGSI and ILS glidepath not coincident (VGSI Angle 3.00/TCH 67).		1060	3000	FTZ R-095	MOODS
		↑	hdg 130°		△
SISDE INT I-OGZ 17.8 RADAR	ZOVUN I-OGZ 14.9 RADAR	HIXOB I-OGZ 10.4 RADAR	JEXAR I-OGZ 7.4 RADAR	*LOC only	
5000	5000	3500	2500	2500	IM
GS 3.00° TCH 55					
2.9 NM		4.4 NM	3 NM	4.6 NM	0.9 NM
CATEGORY	A	B	C	D	E
S-ILS 11	818/18 200 (200-½)				
S-LOC 11	980/24	362 (400-½)	980/35	362 (400-¾)	

