

LOC/DME I-RQN <b>111.95</b> Chan <b>56(Y)</b>	APP CRS <b>303°</b>	Rwy ldg TDZE Apt Elev <b>9001</b> <b>580</b> <b>618</b>
---	------------------------	--

# ILS or LOC RWY 29

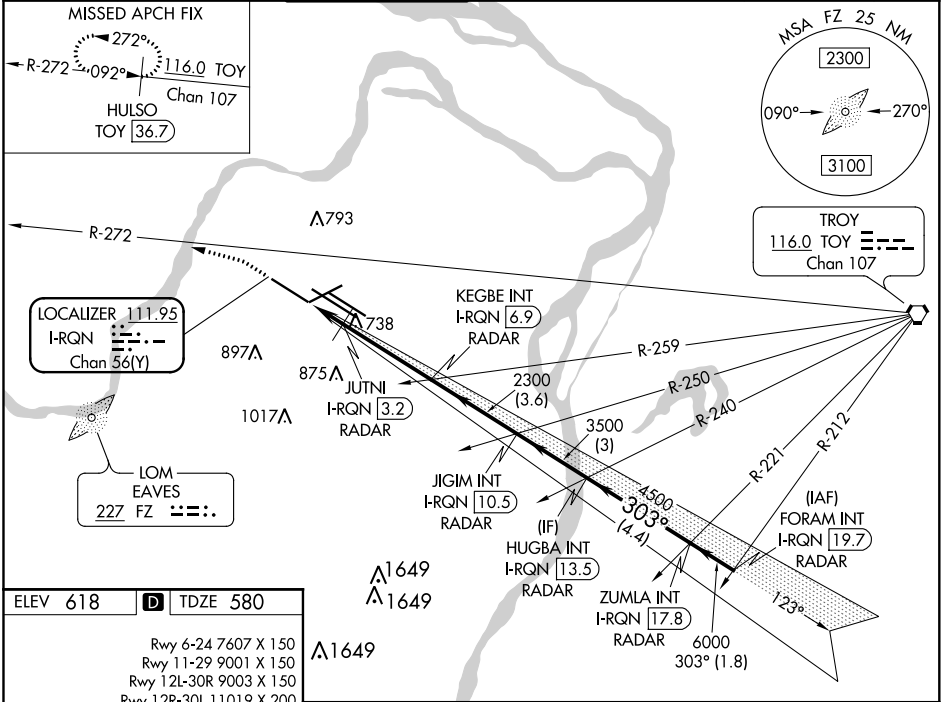
ST LOUIS LAMBERT INTL (STL)

RADAR required for procedure entry. DME or RADAR required.

ALSF-2

MISSED APPROACH: Climb to 1040 then climbing left turn to 3000 on heading 286° and on TOY VORTAC R-272 to HULSO/TOY 36.7 DME and hold.

D-ATIS <b>125.025</b> <b>379.925</b>	ST. LOUIS APP CON <b>132.125 360.6</b>	ST. LOUIS TOWER <b>132.475 239.275</b>	GND CON <b>121.9 348.6</b> (Inbound) <b>121.65 377.175</b> (Outbound) <b>118.925 227.125</b> (Rwy 11/29)	CLNC DEL <b>119.5 363.1</b>	CPDLC
--	---	---	---	--------------------------------	-------



ELEV 618 TDZE 580

Rwy 6-24 7607 X 150  
Rwy 11-29 9001 X 150  
Rwy 12L-30R 9003 X 150  
Rwy 12R-30L 11019 X 200

HIRL all Rwys  
TDZ/CL Rwys 11, 12L, 12R, 29, and 30R  
FAF to MAP 5.2 NM

Knots	60	90	120	150	180
Min:Sec	5:12	3:28	2:36	2:05	1:44

Disregard OM indications.

\* LOC only

1040	3000	TOY R-272	HULSO TOY 36.7	VGSI and ILS glidepath not coincident (VGSI Angle 3.00/ TCH 73).	
↑	hdg 286°				
HUGBA INT I-RQN 13.5 RADAR	ZUMLA INT I-RQN 17.8 RADAR	FORAM INT I-RQN 19.7 RADAR			
JUTNI I-RQN 3.2 RADAR	KEGBE INT I-RQN 6.9 RADAR	JIGIM INT I-RQN 10.5 RADAR			
I-RQN 1.7 RADAR	2300				
1100*	2300	3500	4500	6000	
1.5 NM	3.7 NM	3.6 NM	3 NM	4.4 NM	
				1.8 NM	
GS 3.00° TCH 56					
CATEGORY	A	B	C	D	E
S-ILS 29			780/18	200 (200-½)	
S-LOC 29			980/40	400 (400-¾)	

NC-3, 07 OCT 2021 to 04 NOV 2021

NC-3, 07 OCT 2021 to 04 NOV 2021