

# OZARK EIGHT DEPARTURE

AL-360 (FAA)

ST LOUIS LAMBERT INTL (STL)

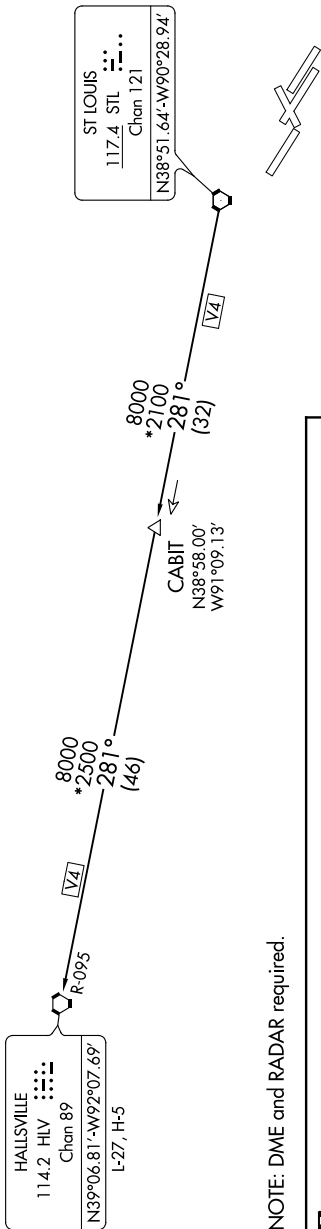
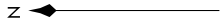
ST. LOUIS, MISSOURI

NC-3, 07 OCT 2021 to 04 NOV 2021

**TOP ALTITUDE:  
(JETS) 5000/(PROPS) 3000**

D-AITS  
125.025 379.925  
CLNC DEL  
119.5 363.1  
CPDIC

GND CON  
121.9 348.6 (Inbound)  
121.65 377.175 (Outbound)  
118.925 227.125 (Rwy 11/29)  
ST LOUIS TOWER  
120.05 284.6 (Rwys 12L/30R, 24)  
118.5 257.7 (Rwy 12R/30L)  
132.475 239.275 (Rwys 6, 11/29)  
ST. LOUIS DEP CON  
128.1 307.05



NOTE: DME and RADAR required.

## DEPARTURE ROUTE DESCRIPTION

Climb on assigned heading for vector to appropriate route.

JETS: Maintain 5000 or assigned altitude, Thence. . . .

PROPS: Maintain 3000 or assigned altitude, Thence. . . .

. . . . (transition). Expect filed altitude 10 minutes after departure.

**HALLSVILLE TRANSITION [OZARK8.HLV]**: From over STL VORTAC on STL R-281 to CABIT, then on STL R-281 and HLV R-095 to HLV VORTAC.

## TAKEOFF MINIMUMS

Rwys 6, 12L/R, 24, 29: Standard.

Rwy 11: 200-1 or standard with minimum climb of 370' per NM to 900.

Rwy 30L: 200-1 or standard with minimum climb of 245' per NM to 800.

Rwy 30R: 200-1 3/4 or standard with minimum climb of 230' per NM to 800.

NOTE: Chart not to scale.

# OZARK EIGHT DEPARTURE

ST. LOUIS, MISSOURI

ST LOUIS LAMBERT INTL (STL)

NC-3, 07 OCT 2021 to 04 NOV 2021