

PLESS FIVE DEPARTURE

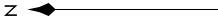
AL-360 (FAA)

ST LOUIS LAMBERT INTL (STL)
ST. LOUIS, MISSOURI

NC-3, 07 OCT 2021 to 04 NOV 2021

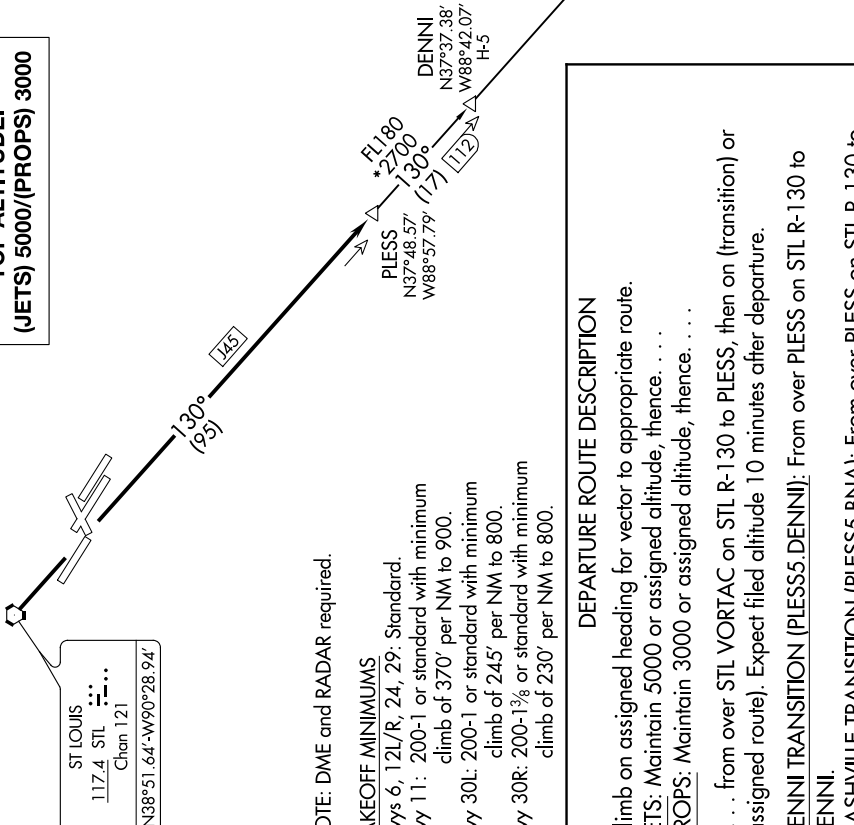
**TOP ALTITUDE:
(JETS) 5000/(PROPS) 3000**

D-AIIS
125.025 379.925
CLNC DEL
119.5 363.1
CPDIC
GND CON
121.9 348.6 (Inbound)
121.65 377.175 (Outbound)
118.925 227.125 (Rwy 11/29)
ST LOUIS TOWER
120.05 284.6 (Rwys 12L/30R, 24)
118.5 257.7 (Rwy 12R/30L)
132.475 239.275 (Rwys 6, 11/29)
ST. LOUIS DEP CON
128.1 307.05



POCKET CITY
113.3 PKV
Chan 80

NASHVILLE
114.1 BNA
Chan 88
N36°08.22'
W86°41.09'
L-16, H-6-9



NOTE: DME and RADAR required.

TAKEOFF MINIMUMS

- Rwys 6, 12L/R, 24, 29: Standard.
- Rwy 11: 200-1 or standard with minimum climb of 370' per NM to 900.
- Rwy 30L: 200-1 or standard with minimum climb of 245' per NM to 800.
- Rwy 30R: 200-1 $\frac{3}{8}$ or standard with minimum climb of 230' per NM to 800.

DEPARTURE ROUTE DESCRIPTION

Climb on assigned heading for vector to appropriate route.
JETS: Maintain 5000 or assigned altitude, thence. . . .
PROPS: Maintain 3000 or assigned altitude, thence. . . .
 . . . from over STL VORTAC on STL R-130 to PLESS, then on (transition) or (assigned route). Expect filed altitude 10 minutes after departure.
DENNI TRANSITION (PLESS5.DENNI): From over PLESS on STL R-130 to DENNI.
NASHVILLE TRANSITION (PLESS5.BNA): From over PLESS on STL R-130 to DENNI, then on STL R-130 and BNA R-315 to BNA VORTAC.

NOTE: Chart not to scale.

PLESS FIVE DEPARTURE

NC-3, 07 OCT 2021 to 04 NOV 2021