

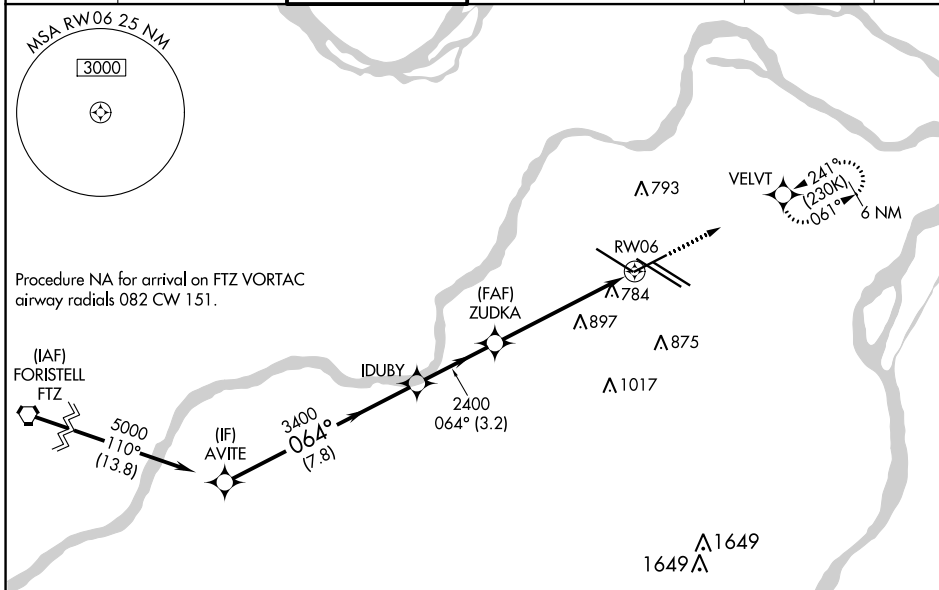
APP CRS	Rwy ldg	7352
064°	TDZE	551
	Apt Elev	618

RNAV (GPS) RWY 6

ST LOUIS LAMBERT INTL (STL)

RNP APCH.	MALSR	MISSED APPROACH: Climb to 3000 direct VELVT and hold, continue climb-in-hold to 3000.
▼ WAAS VNAV NA. For uncompensated Baro-VNAV systems, LNAV/VNAV NA below -18°C or above 54°C. For inop ALS increase LNAV/VNAV Cat E visibility to 1 1/2 SM and LNAV Cats C/D/E visibility to 1 3/8 SM.		

D-ATIS	ST. LOUIS APP CON	ST. LOUIS TOWER	GND CON	CLNC DEL	CPDLC
125.025 379.925	132.125 360.6	132.475 239.275	121.9 348.6 (Inbound) 121.65 377.175 (Outbound) 118.925 227.125 (Rwy 11/29)	119.5 363.1	



Procedure NA for arrival on FTZ VORTAC airway radials 082 CW 151.

NC-3, 07 OCT 2021 to 04 NOV 2021

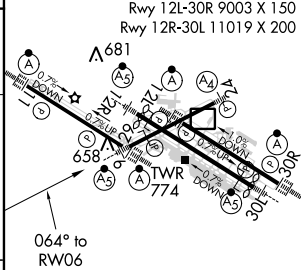
NC-3, 07 OCT 2021 to 04 NOV 2021

ELEV 618	D TDZE 551
----------	-------------------



Rwy 6-24 7607 X 150
Rwy 11-29 9001 X 150
Rwy 12L-30R 9003 X 150
Rwy 12R-30L 11019 X 200

GP 3.00°	TCH 50		
7.8 NM	3.2 NM	4.3 NM	1.4 NM
AVITE	IDUBY	ZUDKA	RWY 06



CATEGORY	A	B	C	D	E
LNAV/VNAV	1103/60 552 (500-1 1/4)				
LNAV MDA	1040/24 489 (500-1/2)		1040/50 489 (500-1)		

HIRL all Rwys
TDZ/CL Rwys 11, 12L, 12R, 29, and 30R