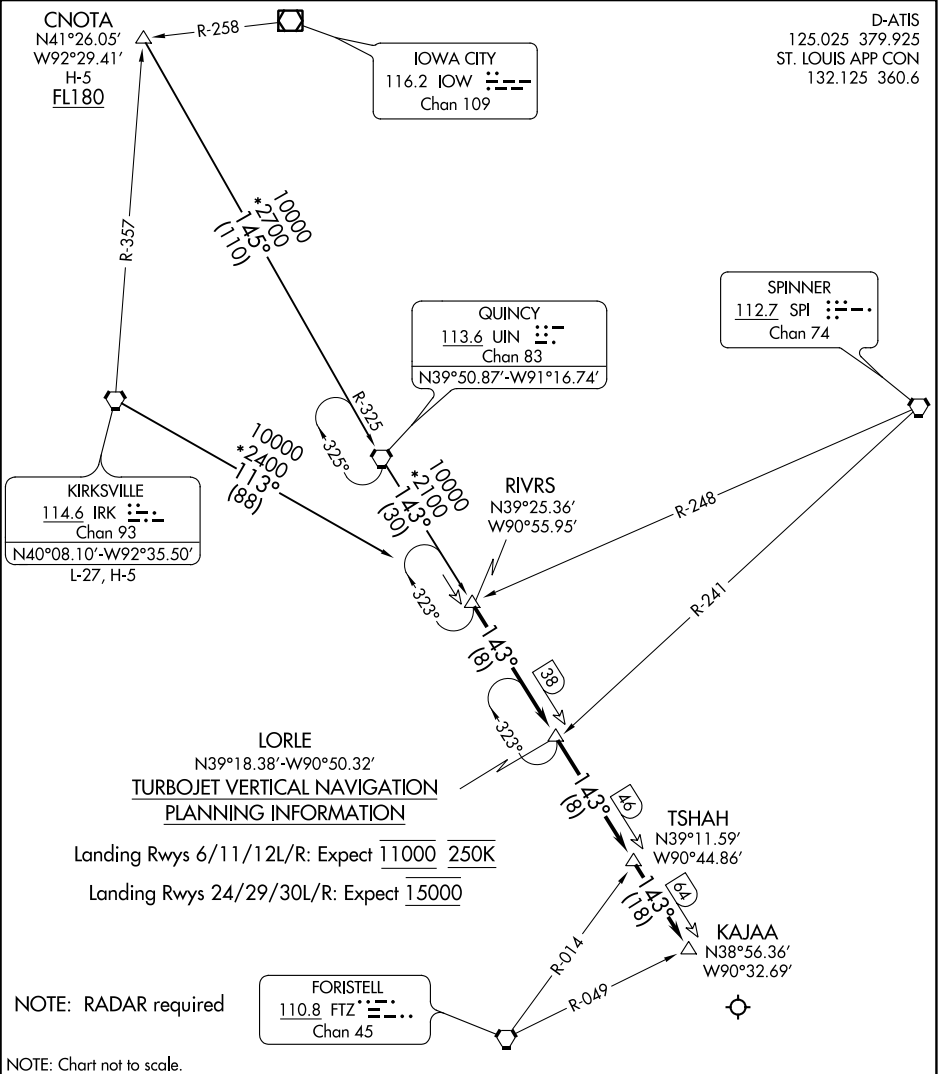


RIVRS SIX ARRIVAL

AL-360 (FAA)

ST LOUIS LAMBERT INTL (STL)
ST. LOUIS, MISSOURI



NC-3, 07 OCT 2021 to 04 NOV 2021

NC-3, 07 OCT 2021 to 04 NOV 2021

**TURBOJET VERTICAL NAVIGATION
PLANNING INFORMATION**

Landing Rwy 6/11/12L/R: Expect 11000 250K

Landing Rwy 24/29/30L/R: Expect 15000

NOTE: Chart not to scale.

ARRIVAL ROUTE DESCRIPTION

CNOTA TRANSITION (CNOTA.RIVRS6): From over CNOTA on UIN R-325 to UIN VORTAC then on UIN R-143 to RIVRS. Thence. . . .

KIRKSVILLE TRANSITION (IRK.RIVRS6): From over IRK VORTAC on IRK R-113 to RIVRS. Thence. . . .

LANDING ALL RUNWAYS: From over RIVRS on UIN R-143 to KAJAA , thence. . . .
. . . .expect vectors to final approach course.

RIVRS SIX ARRIVAL

(RIVRS.RIVRS6) 20JUN19

ST. LOUIS, MISSOURI
ST LOUIS LAMBERT INTL (STL)