

APP CRS	Rwy Idg	10818
303°	TDZE	583
	Apt Elev	618


RNAV (RNP) Z RWY 30L

ST LOUIS LAMBERT INTL (STL)

RNP AR APCH.

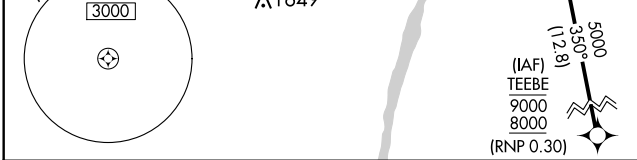
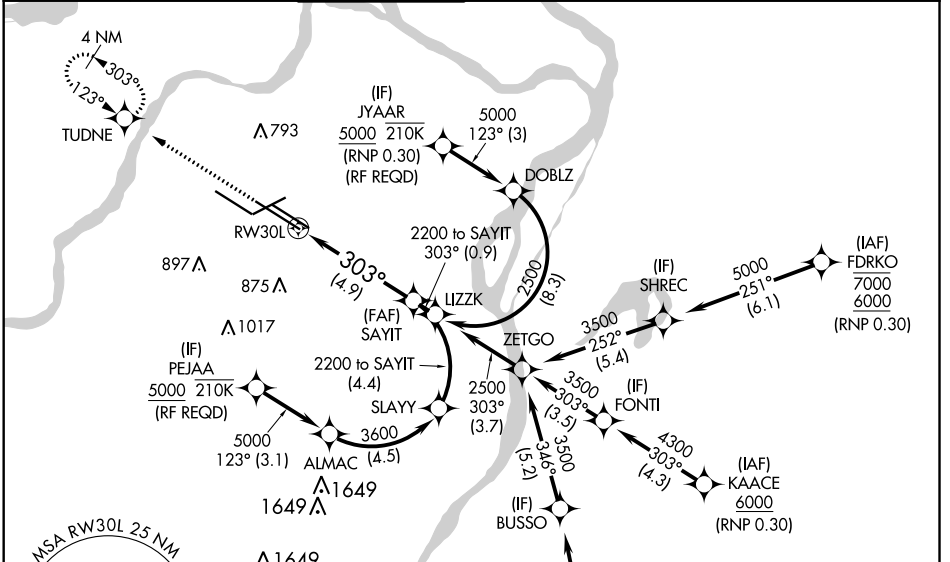
▼ Use of FD or AP required during simultaneous operations. Simultaneous approach authorized with Rwy 29, except for arrivals at JYAAR and PEJAA. For uncompensated Baro-VNAV systems, procedure NA below -18°C or above 54°C. For inop ALS, increase RNP 0.15 all Cats visibility to RVR 5500 and RNP 0.30 all Cats visibility to RVR 6000.

MALSR

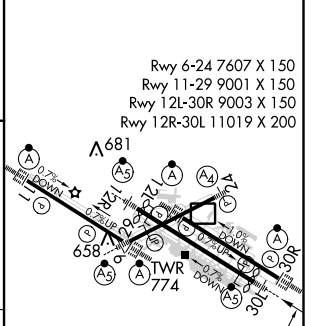
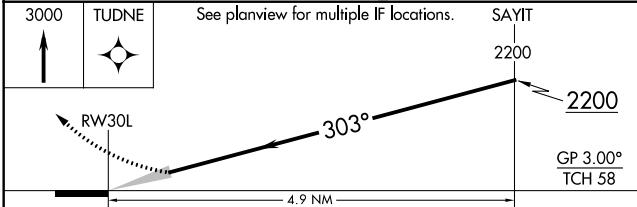


MISSED APPROACH: Climb to 3000 direct TUDNE and hold, continue climb-in-hold to 3000.

D-ATIS 125.025 379.925	ST. LOUIS APP CON 132.125 360.6	ST. LOUIS TOWER 118.5 257.7	GND CON 121.9 348.6 (Inbound) 121.65 377.175 (Outbound) 118.925 227.125 (Rwy 11/29)	CLNC DEL 119.5 363.1	CPDLC
--	---	---------------------------------------	---	--------------------------------	-------



ELEV 618	D TDZE 583
----------	-------------------



CATEGORY	A	B	C	D
RNP 0.15 DA		947/35	364 (400- ⁵ / ₆)	
RNP 0.30 DA		998/40	415 (400- ³ / ₄)	

AUTHORIZATION REQUIRED

NC-3, 07 OCT 2021 to 04 NOV 2021

NC-3, 07 OCT 2021 to 04 NOV 2021