

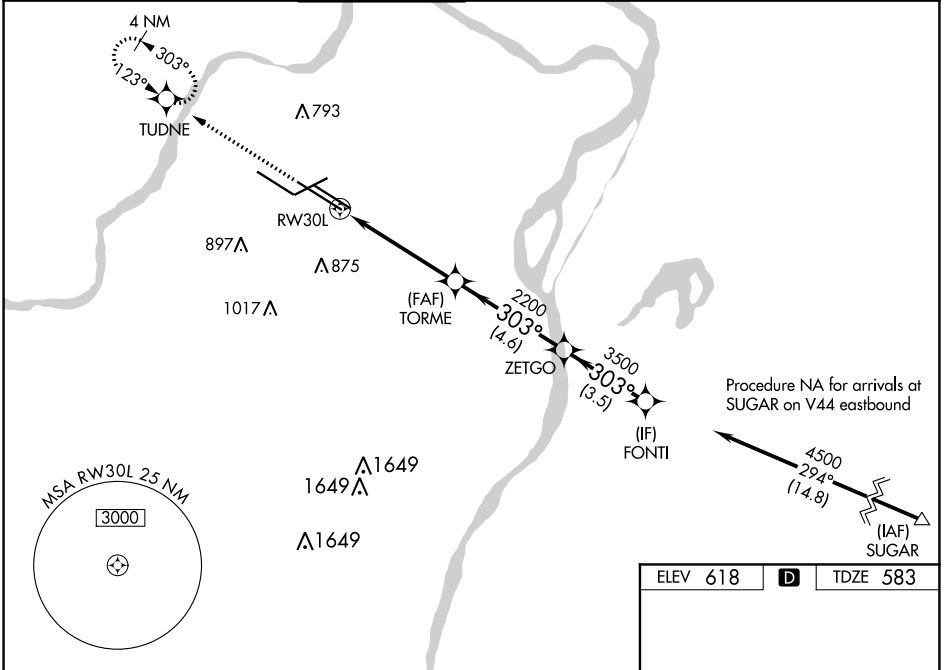
WAAS CH <b>99621</b> <b>W30B</b>	APP CRS <b>303°</b>	Rwy ldg <b>10818</b> TDZE <b>583</b> Apt Elev <b>618</b>
----------------------------------------	------------------------	----------------------------------------------------------------

# RNAV (GPS) Y RWY 30L

ST LOUIS LAMBERT INTL (STL)

RNP APCH.	MALSR	MISSED APPROACH: Climb to 3000 direct TUDNE and hold, continue climb-in-hold to 3000.
<p>▼ LNAV procedure NA during simultaneous operations. Use of FD or AP required during simultaneous operations. Simultaneous approach authorized with Rwy 29. For uncompensated Baro-VNAV systems, LNAV/VNAV NA below -18°C or above 54°C. For inop ALS, increase LNAV Cat C/D visibility to 1½ SM. # RVR 1800 authorized with use of FD or AP or HUD to DA.</p>		

D-ATIS <b>125.025</b> <b>379.925</b>	ST. LOUIS APP CON <b>132.125 360.6</b>	ST. LOUIS TOWER <b>118.5 257.7</b>	GND CON <b>121.9 348.6</b> (Inbound) <b>121.65 377.175</b> (Outbound) <b>118.925 227.125</b> (Rwy 11/29)	CLNC DEL <b>119.5 363.1</b>	CPDLC
--------------------------------------------	-------------------------------------------	---------------------------------------	-------------------------------------------------------------------------------------------------------------------	--------------------------------	-------



NC-3, 07 OCT 2021 to 04 NOV 2021

NC-3, 07 OCT 2021 to 04 NOV 2021

3000	TUDNE	FONTI			
*LNAV only		TORME	ZETGO	FONTI	
*1.4 NM to RWY 30L		2200	3500	4500	
RWY 30L		2200	3500	GP 3.00° TCH 58	
1.4 NM		3.5 NM	4.6 NM	3.5 NM	
CATEGORY	A	B	C	D	
LPV DA#	783/24		200 (200-½)		
LNAV/VNAV DA	974/35		391 (400-¾)		
LNAV MDA	1100/24 517 (500-½)		1100/55 517 (500-1)		

