

(BWALL2.BWALL) 21168

AL-401 (FAA)  
SPARTANBURG DOWNTOWN MEML/SIMPSON FLD (SPA)

# BWALL TWO DEPARTURE (RNAV)

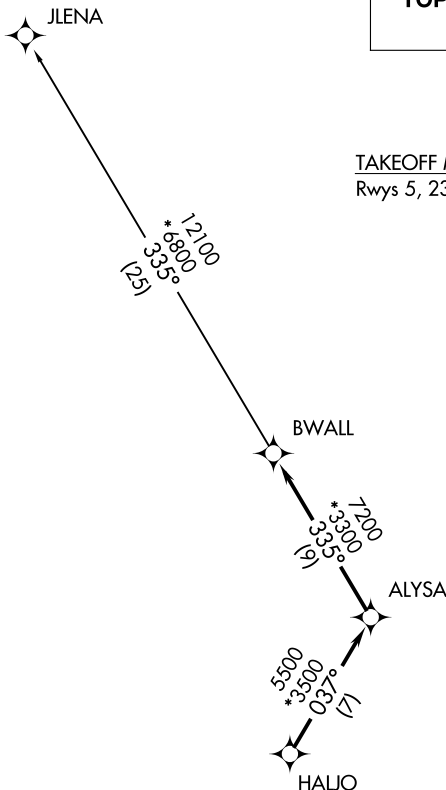
SPARTANBURG, SOUTH CAROLINA

AWOS-3  
133.925  
CLNC DEL  
120.55  
UNICOM  
123.0  
GREER DEP CON ★  
119.4 350.2

**TOP ALTITUDE:  
3000**

### TAKEOFF MINIMUMS

Rwys 5, 23: Standard.



- NOTE: For turbojets only.
- NOTE: RNAV 1.
- NOTE: RADAR required.
- NOTE: DME/DME/IRU or GPS required.
- NOTE: If unable to accept climb rates, advise ATC on initial contact.
- NOTE: Transponder code will be issued via PDC or CLNC DEL.



NOTE: Chart not to scale.

SE-2, 07 OCT 2021 to 04 NOV 2021

SE-2, 07 OCT 2021 to 04 NOV 2021



## DEPARTURE ROUTE DESCRIPTION

**TAKEOFF ALL RUNWAYS:** Climb on assigned heading for RADAR vectors to HALJO, then on depicted route to BWALL, thence. . . .

. . . .on JLENA transition. Maintain 3000. Expect clearance to filed altitude within 10 minutes after departure.

JLENA TRANSITION (BWALL2.JLENA)

# BWALL TWO DEPARTURE (RNAV)

SPARTANBURG, SOUTH CAROLINA

(BWALL2.BWALL) 25APR19

SPARTANBURG DOWNTOWN MEML/SIMPSON FLD (SPA)