

LOC/DME I-SPA 109.1 Chan 28	APP CRS 047°	Rwy Idg 5852 TDZE 802 Apt Elev 802
---	------------------------	---

ILS or LOC RWY 5

SPARTANBURG DOWNTOWN MEML/SIMPSON FLD (SPA)

DME required. ▼ ▲ For inop ALS, increase S-LOC 5 Cats C/D visibility to 1 SM.	MALS R AS	MISSED APPROACH: Climb to 1300 then climbing left turn to 3000 direct SPA VORTAC and hold, continue climb-in-hold to 3000.
---	--------------	--

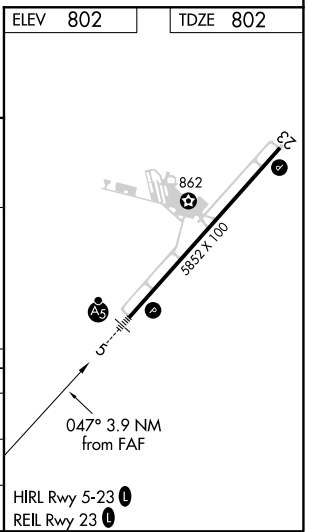
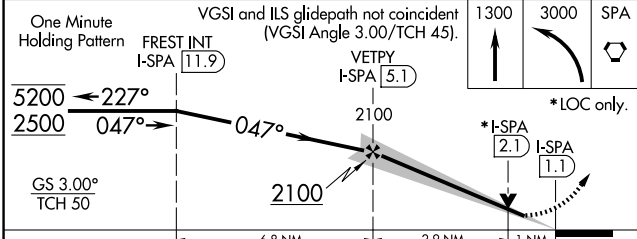
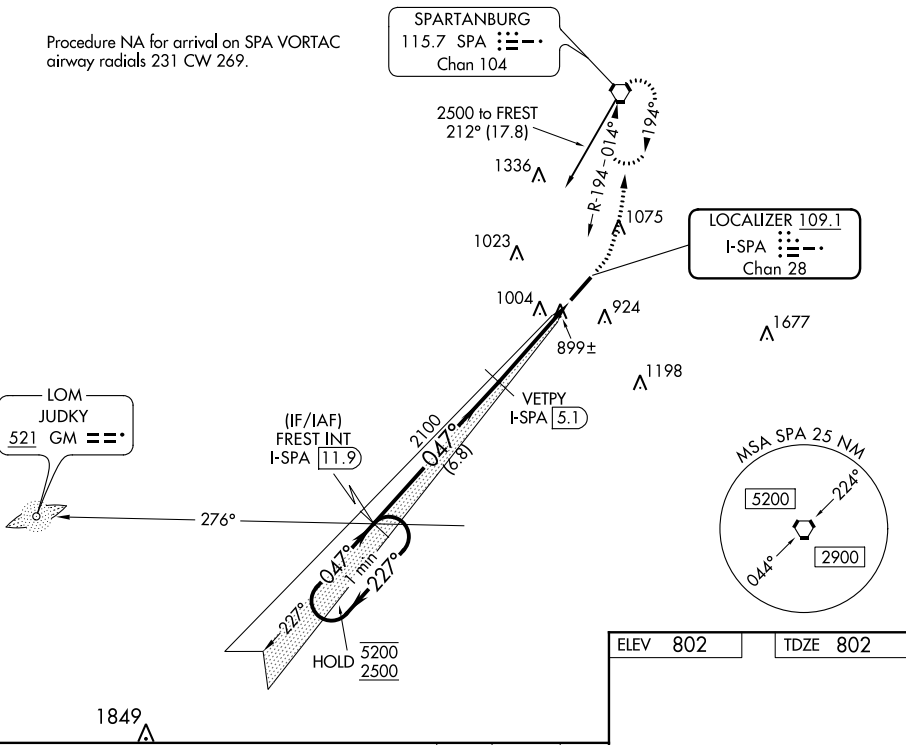
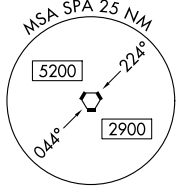
AWOS-3 133.925	GREER APP CON ★ 119.4 350.2	CLNC DEL 120.55	UNICOM 123.0 (CTAF) 0
--------------------------	---------------------------------------	---------------------------	--

Procedure NA for arrival on SPA VORTAC airway radials 231 CW 269.

SPARTANBURG
115.7 SPA **014**
Chan 104

LOCALIZER **109.1**
I-SPA **028**
Chan 28

LOM
JUDKY
521 GM **028**



CATEGORY	A	B	C	D
S-ILS 5		1002-1/2	200 (200-1/2)	
S-LOC 5	1160-1/2	358 (400-1/2)	1160-5/8	358 (400-5/8)
C CIRCLING	1320-1	518 (600-1)	1380-1/2 578 (600-1/2)	1420-2 618 (700-2)

ILS or LOC RWY 5

SE-2, 07 OCT 2021 to 04 NOV 2021

SE-2, 07 OCT 2021 to 04 NOV 2021