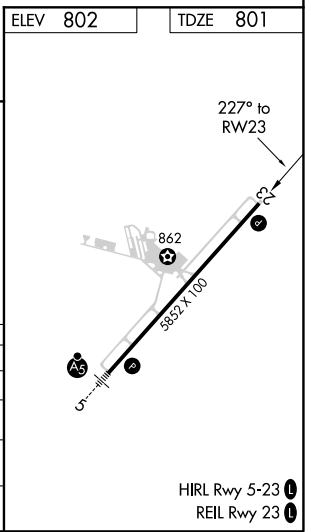
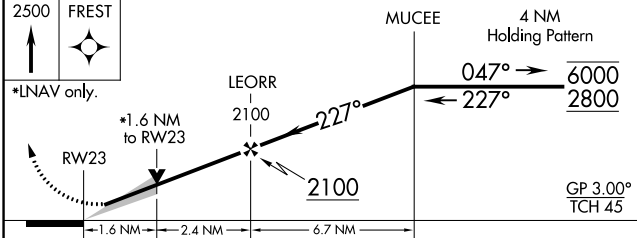
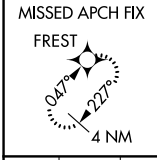
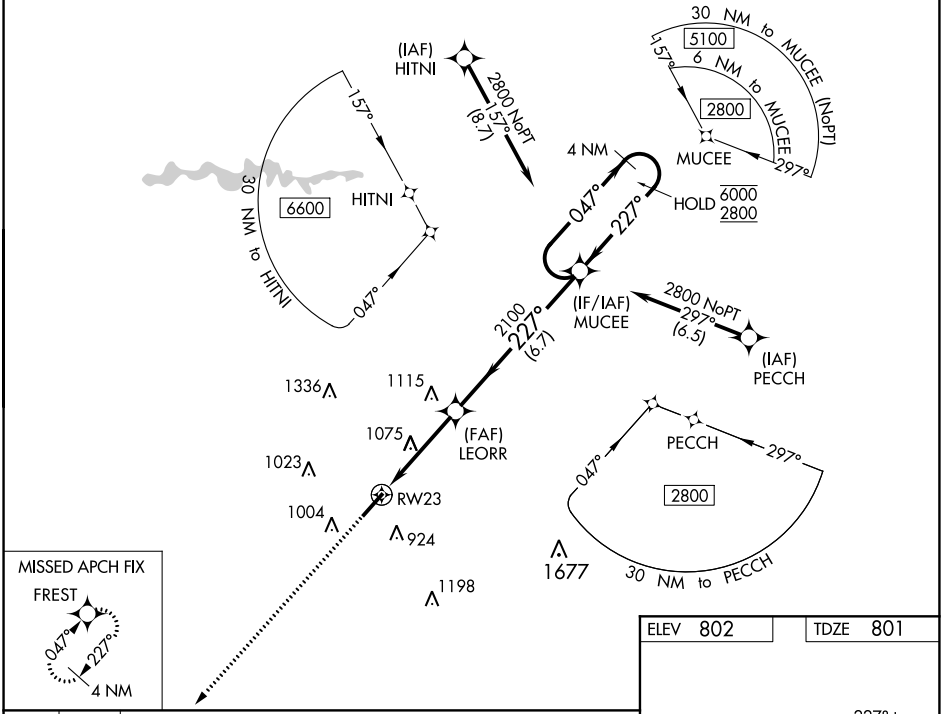


WAAS CH 65926 W23A	APP CRS 227°	Rwy Idg TDZE Apt Elev	5852 801 802
--	------------------------	-----------------------------	---

RNAV (GPS) RWY 23

SPARTANBURG DOWNTOWN MEML/SIMPSON FLD (SPA)

RNP APCH.		MISSED APPROACH: Climb to 2500 direct FREST and hold.	
▼ For uncompensated Baro-VNAV systems, LNAV/VNAV NA below -16°C or above 54°C.			
AWOS-3 133.925	GREER APP CON * 119.4 350.2	CLNC DEL 120.55	UNICOM 123.0 (CTAF) 1



CATEGORY	A	B	C	D
LPV DA		1001-3/4	200 (200-3/4)	
LNAV/VNAV DA		1090-7/8	289 (300-7/8)	
LNAV MDA	1340-1	539 (600-1)	1340-1 1/2	539 (600-1 1/2)
C CIRCLING	1340-1	538 (600-1)	1380-1 1/2 578 (600-1 1/2)	1420-2 618 (700-2)

RNAV (GPS) RWY 23

SE-2, 07 OCT 2021 to 04 NOV 2021

SE-2, 07 OCT 2021 to 04 NOV 2021