

LOC/DME I-SCK 109.1 Chan 28	APP CRS 294°	Rwy Idg TDZE Apt Elev	8650 32 33
--	------------------------	-----------------------------	---------------------------------------

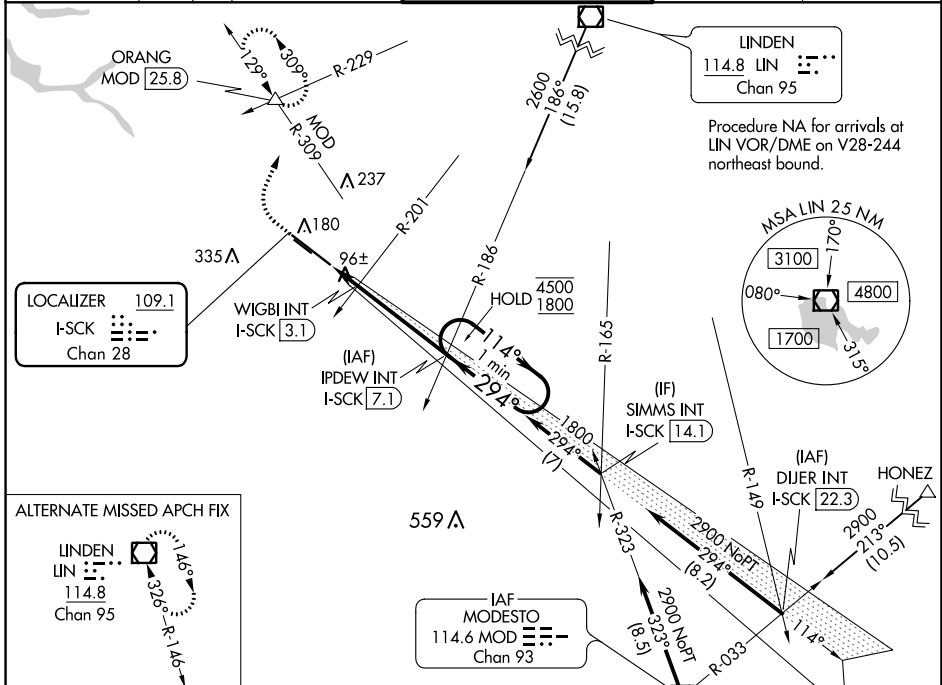
ILS or LOC RWY 29R

STOCKTON METRO (SCK)

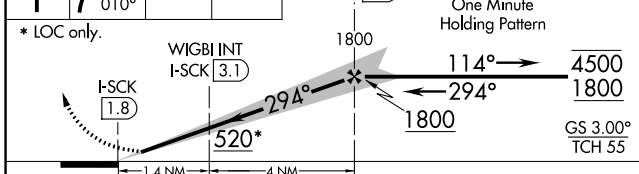
⚠ For inop ALS, increase S-LOC 29R Cat C/D visibility to 1 3/8 SM.
⚠ #RVR 1800 authorized with use of FD or AP or HUD to DA.

MALS R MISSED APPROACH: Climb to 500 then climbing right turn to 2000 on heading 010° and MOD VOR/DME R-309 to ORANG INT/MOD 25.8 DME and hold.

ATIS 118.25	NORCAL APP CON (SE-NW) 123.85 278.3 (N-SE) 125.1 363.2	STOCKTON TOWER * 120.3 (CTAF) 0 239.0	GND CON 121.9	UNICOM 122.95
-----------------------	--	---	-------------------------	-------------------------

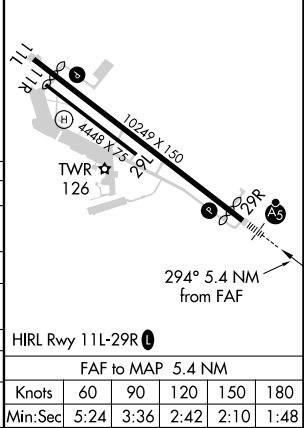


500	2000	MOD R-309	ORANG	VGSI and ILS glidepath not coincident (VGSI Angle 3.00/TCH 71).
				IPDEW INT I-SCK [7.1]



CATEGORY	A	B	C	D
S-ILS 29R #	232/24		200 (200-1/2)	
S-LOC 29R	520/24 488 (500-1/2)		520/50 488 (500-1)	
C CIRCLING	520-1 487 (500-1)	540-1 507 (600-1)	640-1 3/4 607 (700-1 3/4)	640-2 607 (700-2)
WIGBI FIX MINIMUMS (DUAL VOR RECEIVERS or DME REQUIRED)				
S-LOC 29R	360/24 328 (400-1/2)		360/26 328 (400-1/2)	
C CIRCLING	500-1 467 (500-1)	540-1 507 (600-1)	640-1 3/4 607 (700-1 3/4)	640-2 607 (700-2)

ELEV 33	D TDZE 32
---------	------------------



SW-2, 07 OCT 2021 to 04 NOV 2021

SW-2, 07 OCT 2021 to 04 NOV 2021