

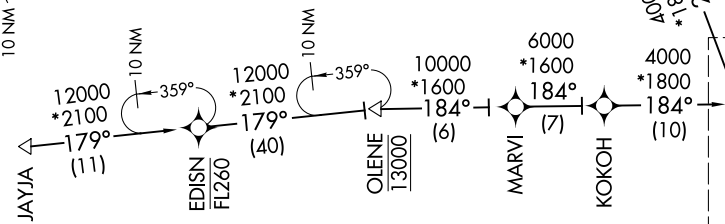
DADES SEVEN ARRIVAL (RNAV) Transition Routes

TAMPA, FLORIDA

SE-3, 07 OCT 2021 to 04 NOV 2021

TAMPA APP CON
135.5 279.6
KMCF ATIS
133.825 270.1
PIE ATIS
134.5
TPA D-ATIS
126.45
VDF AWOS-3
121.125

- NOTE: RADAR required.
- NOTE: RNAV 1.
- NOTE: DME/DME/IRU or GPS required.
- NOTE: Descend via MACH number until intercepting 280K.
- NOTE: Maintain 280K until slowed by the STAR or assigned by ATC.
- NOTE: Primary landing Rwy's 1L/R, 19L/R.
- NOTE: TPA landing South: Expect 250K at OLENE.
- NOTE: TPA landing North: Expect RADAR vectors prior to JSTRM.
- NOTE: TPA landing South: Expect RADAR vectors prior to JKBAL.
- NOTE: Landing all satellite airports: Expect RADAR vectors prior to GSPAR.
- NOTE: EDISN, BEAUX and NICK TRANSITIONS, ATC assigned only.
- NOTE: Turbojet and turboprop aircraft only.



BEAUX TRANSITION (BEAUX.DADES7)
EDISN TRANSITION (EDISN.DADES7)
HIBAC TRANSITION (HIBAC.DADES7)
JAYJA TRANSITION (JAYJA.DADES7)
NICK TRANSITION (NICK.DADES7)

(NARRATIVE ON FOLLOWING PAGE)
(CONTINUED IN FOLLOWING PAGE)

See following page
for Arrival Routes

NOTE: Chart not to scale.

SE-3, 07 OCT 2021 to 04 NOV 2021

DADES SEVEN ARRIVAL (RNAV) Transition Routes

TAMPA, FLORIDA