

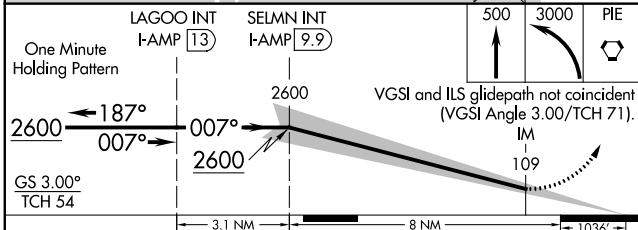
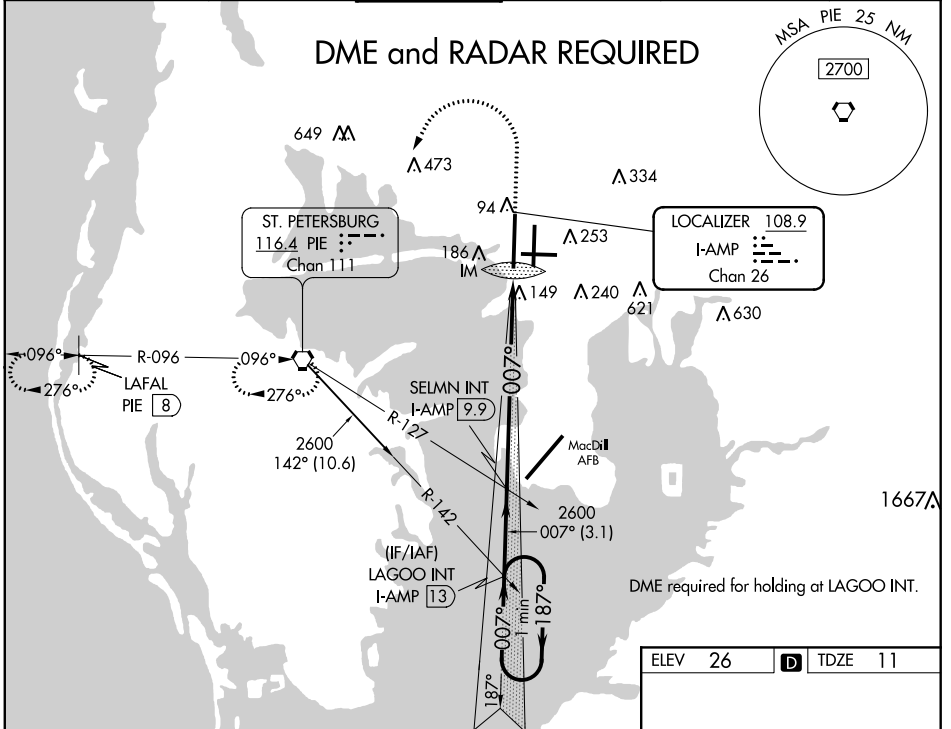
LOC/DME I-AMP <b>108.9</b> Chan <b>26</b>	APP CRS <b>007°</b>	Rwy Idg <b>10800</b> TDZE <b>11</b> Apt Elev <b>26</b>
---	------------------------	--

# ILS RWY 1L (CAT II & III)

TAMPA INTL (TPA)

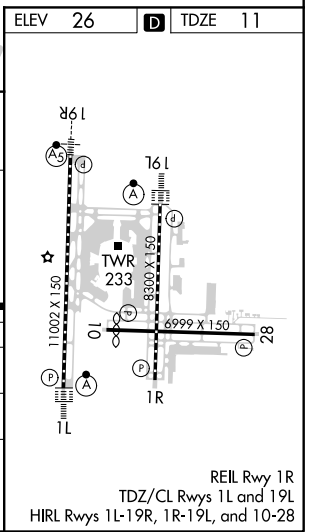
Simultaneous approach authorized.  
 CAT II: RVR 1000 authorized with specific OPSPEC, MSPEC or LOA approval and use of autoland or HUD to touchdown.  
 MISSED APPROACH: Climb to 500 then climbing left turn to 3000 direct PIE VORTAC and hold, continue climb-in-hold to 3000 (TACAN aircraft climb to 500 then climbing left turn to 4000 direct PIE VORTAC then on PIE VORTAC R-276 to LAFAL/PIE 8 DME and hold W, RT, 096 inbound)

ARR <b>126.45</b>	D-ATIS <b>128.475</b>	DEP <b>118.5 307.175</b>	TAMPA APP CON <b>119.5 269.4</b>	TAMPA TOWER <b>121.7 269.4</b>	GND CON <b>121.7 269.4</b>	CLNC DEL <b>133.6</b>	CPDLC
----------------------	--------------------------	-----------------------------	-------------------------------------	-----------------------------------	-------------------------------	--------------------------	-------



CATEGORY	A	B	C	D
S-ILS 1L	CAT II RA 105/12 100 DA 111			
S-ILS 1L	CAT III RVR 06			

**CATEGORY II & III ILS - SPECIAL AIRCREW & AIRCRAFT CERTIFICATION REQUIRED**



SE-3, 07 OCT 2021 to 04 NOV 2021

SE-3, 07 OCT 2021 to 04 NOV 2021