

LOC I-TPA <b>110.3</b>	APP CRS <b>187°</b>	Rwy ldg 8300	TDZE 26
		Apt Elev 26	

# ILS or LOC RWY 19L

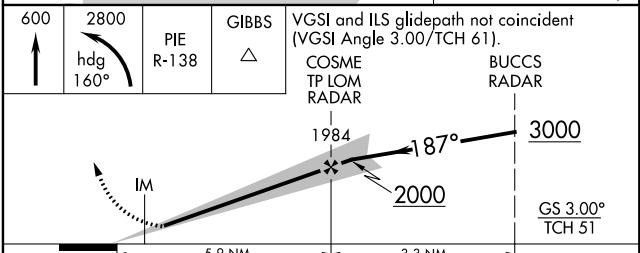
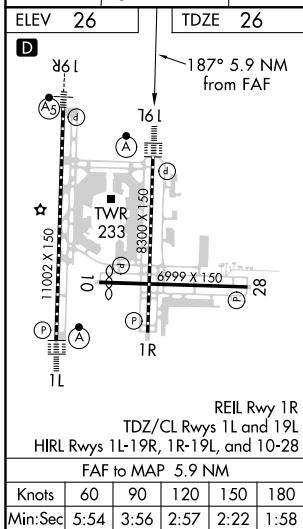
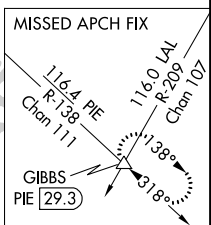
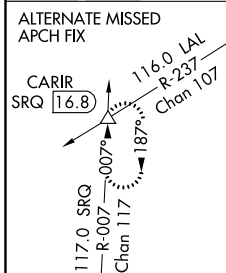
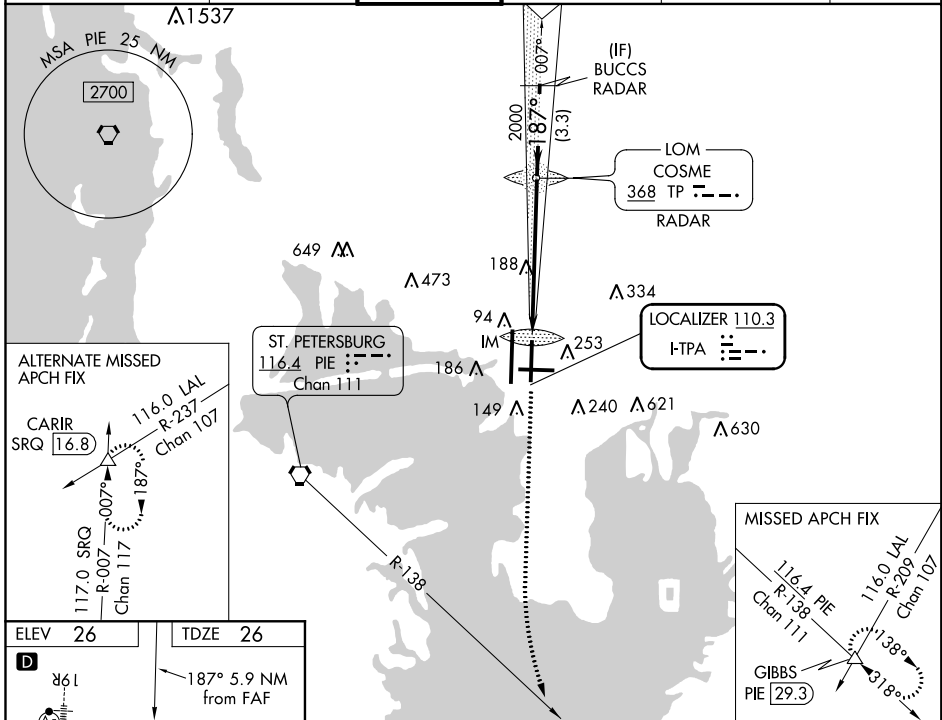
TAMPA INTL (TPA)

▼ Simultaneous approach authorized. RADAR required.  
▲ For inop ALS, increase S-ILS 19L Cat E visibility to RVR 4000 and S-LOC 19L Cat E visibility to RVR 6000.

ALSF-2

MISSED APPROACH: Climb to 600 then climbing left turn to 2800 on heading 160° and on PIE VORTAC R-138 to GIBBS INT/PIE 29.3 DME and hold.

ARR <b>126.45</b>	D-ATIS <b>128.475</b>	DEP <b>118.5 307.175</b>	TAMPA APP CON <b>119.5 269.4</b>	TAMPA TOWER <b>119.5 269.4</b>	GND CON <b>121.7 269.4</b>	CLNC DEL <b>133.6</b>	CPDLC
----------------------	--------------------------	-----------------------------	-------------------------------------	-----------------------------------	-------------------------------	--------------------------	-------



CATEGORY	A	B	C	D	E
S-ILS 19L	226/18 200 (200-1/2)				
S-LOC 19L	440/24	414 (500-1/2)	440/40 414 (500-3/4)		
CIRCLING	560-1	534 (600-1)	680-1 3/4 654 (700-1 3/4)	980-3 954 (1000-3)	NA

SE-3, 07 OCT 2021 to 04 NOV 2021

SE-3, 07 OCT 2021 to 04 NOV 2021