

TAMPA, FLORIDA

AL-416 (FAA)

21168

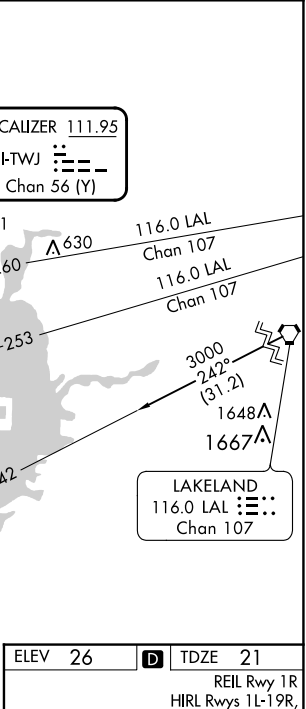
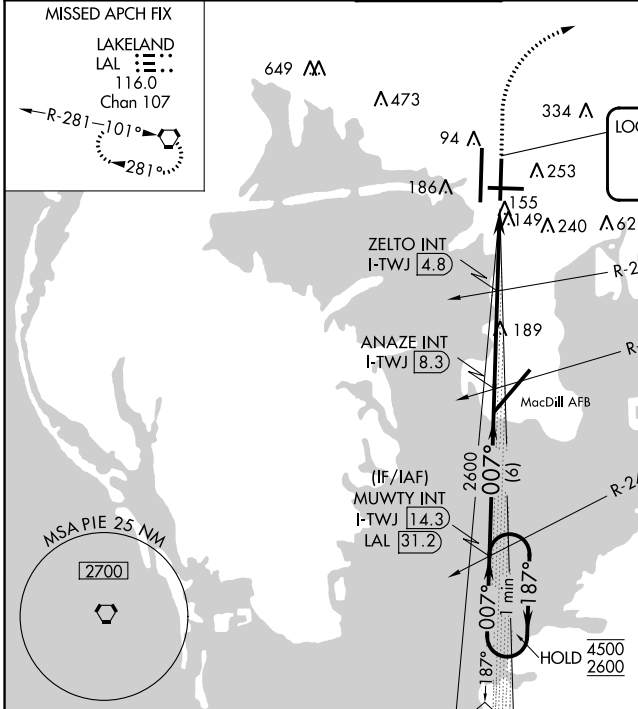
LOC/DME I-TWJ 111.95 Chan 56 (Y)	APP CRS 007°	Rwy Idg 8300 TDZE 21 Apt Elev 26
--	------------------------	---

LOC RWY 1R

TAMPA INTL (TPA)

MISSED APPROACH: Climb to 500 then climbing right turn to 2000 direct LAL VORTAC and hold.

ARR 126.45	D-ATIS 128.475	DEP 118.5 307.175	TAMPA APP CON 119.5 269.4	TAMPA TOWER 121.7 269.4	GND CON 121.7 269.4	CLNC DEL 133.6	CPDLC
-------------------	-----------------------	--------------------------	----------------------------------	--------------------------------	----------------------------	-----------------------	-------



One Minute Holding Pattern

MUWY INT I-TWJ 14.3

ANAZE INT I-TWJ 8.3

500 2000 LAL

4500 ← 187° 007° → 2600

ZELTO INT I-TWJ 4.8 I-TWJ 2.7 I-TWJ 1.5

1300

3.50° TCH 55

VGSI and descent angle not coincident (VGSI Angle 3.00/TCH 71).

6 NM 3.5 NM 2.1 NM 1.2 NM

ELEV 26	TDZE 21
---------	---------

REIL Rwy 1R
HIRL Rws 1L-19R,
1R-19L, and 10-28
TDZ/CL Rws 1L and 19L

FAF to MAP 6.8 NM

Knots	60	90	120	150	180
Min:Sec	6:48	4:32	3:24	2:43	2:16

CATEGORY	A	B	C	D
S-1R	1300-1¼ 1279 (1300-1¼)	1300-1½ 1279 (1300-1½)	1300-3	1279 (1300-3)
CIRCLING	1300-1¼ 1274 (1300-1¼)	1300-1½ 1274 (1300-1½)	1300-3	1274 (1300-3)
ZELTO FIX MINIMUMS (DUAL VOR RECEIVERS OR DME REQUIRED)				
S-1R	460-1	439 (500-1)	460-1¾ 654 (700-1¾)	439 (500-1¾) 980-3 954 (1000-3)
CIRCLING	560-1	534 (600-1)		

TAMPA, FLORIDA
Amdt 4B 17JUN21

27°59'N-82°32'W

TAMPA INTL (TPA)
LOC RWY 1R

SE-3, 07 OCT 2021 to 04 NOV 2021

SE-3, 07 OCT 2021 to 04 NOV 2021