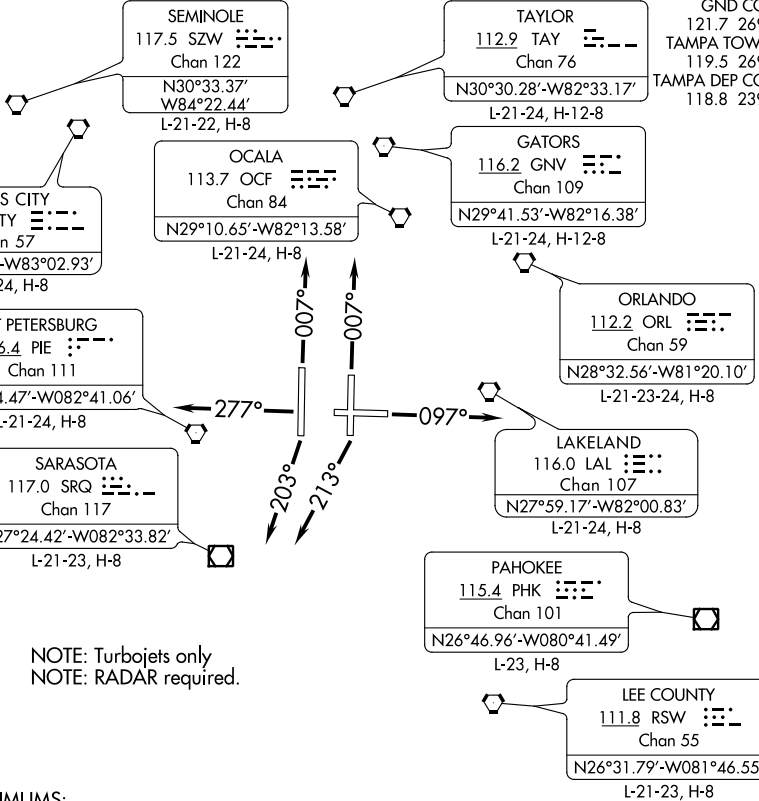


# LGTNG THREE DEPARTURE

**TOP ALTITUDE:  
6000**

D-ATIS DEP  
128.475  
CLNC DEL  
133.6  
CPDLC  
GND CON  
121.7 269.4  
TAMPA TOWER  
119.5 269.4  
TAMPA DEP CON  
118.8 239.3



NOTE: Turbojets only  
NOTE: RADAR required.

**TAKEOFF MINIMUMS:**

Rwys 1L/R, 19R, 28: Standard.

Rwy 10: Standard with minimum climb of 245' per NM to 900.

Rwy 19L: 200-1½ or standard with minimum climb of 220' per NM to 300, or alternatively, with standard takeoff minimums and a normal 200' per NM climb gradient, takeoff must occur no later than 1500' prior to departure end of runway.

NOTE: Chart not to scale.



## DEPARTURE ROUTE DESCRIPTION

TAKEOFF RUNWAYS 1L/R: Climb heading 007°, thence. . . .

TAKEOFF RUNWAY 10: Climb heading 097°, thence. . . .

TAKEOFF RUNWAY 19L: Climb heading 213°, thence. . . .

TAKEOFF RUNWAY 19R: Climb heading 203°, thence. . . .

TAKEOFF RUNWAY 28: Climb heading 277°, thence. . . .

. . . . Expect RADAR vectors to join filed/assigned route. Maintain 6000. Expect clearance to filed altitude/flight level within 10 minutes after departure.

# LGTNG THREE DEPARTURE

SE-3, 07 OCT 2021 to 04 NOV 2021

SE-3, 07 OCT 2021 to 04 NOV 2021