

WAAS CH 87105 W01B	APP CRS 007°	Rwy Idg 8300 TDZE 20 Apt Elev 26
---------------------------------	------------------------	---

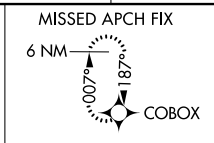
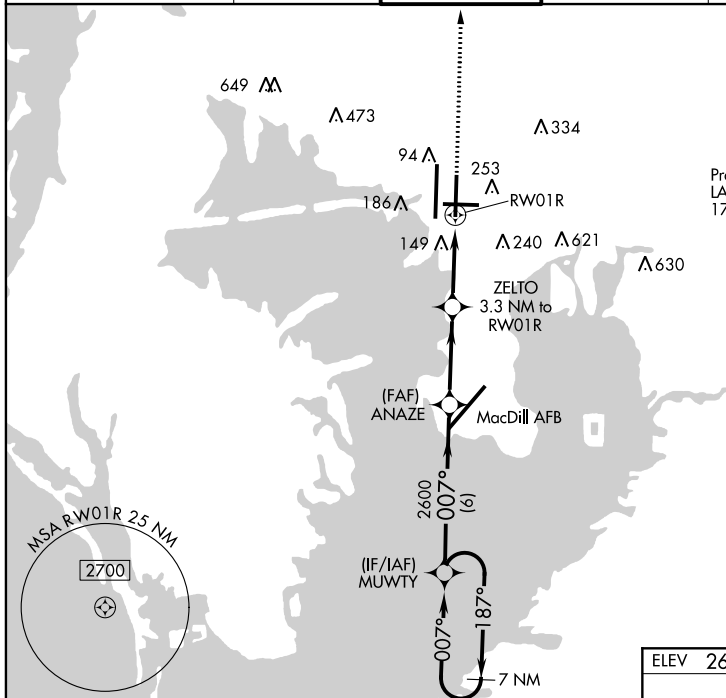
RNAV (GPS) RWY 1R

TAMPA INTL (TPA)

⚠ For uncompensated Baro-VNAV systems, LNAV/VNAV NA below 0°C (32°F) or above 54°C (130°F). DME/DME RNP-0.3 NA. Simultaneous approach authorized with Rwy 1L. LNAV procedure NA during simultaneous operations. Use of FD or AP providing RNAV track guidance required during simultaneous operations.

MISSED APPROACH:
Climb to 2000 direct COBOX and hold.

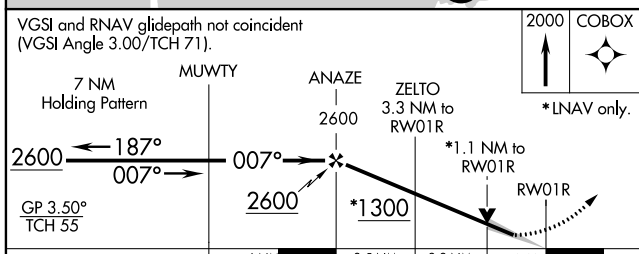
ARR 126.45	D-ATIS 128.475	DEP 118.5 307.175	TAMPA APP CON 119.5 269.4	TAMPA TOWER 121.7 269.4	GND CON 133.6	CLNC DEL CPDLC
----------------------	--------------------------	-----------------------------	-------------------------------------	-----------------------------------	-------------------------	--------------------------



Procedure NA for arrivals on LAL VORTAC airway radials 171 CW 330.

SE-3, 07 OCT 2021 to 04 NOV 2021

SE-3, 07 OCT 2021 to 04 NOV 2021



CATEGORY	A	B	C	D	E
LPV DA	290-7/8	270 (300-7/8)			NA
LNAV/VNAV DA	491-13/8	471 (500-13/8)			NA
LNAV MDA	440-1	420 (500-1)	440-1 1/4	420 (500-1 1/4)	
C CIRCLING	560-1	534 (600-1)	680-1 1/4 654 (700-1 1/4)	980-3	954 (1000-3)

