

WAAS CH <b>49100</b> W <b>19A</b>	APP CRS <b>187°</b>	Rwy Idg TDZE <b>26</b> Apt Elev <b>26</b>	<b>8300</b>
---	------------------------	---	-------------

# RNAV (GPS) Z RWY 19L

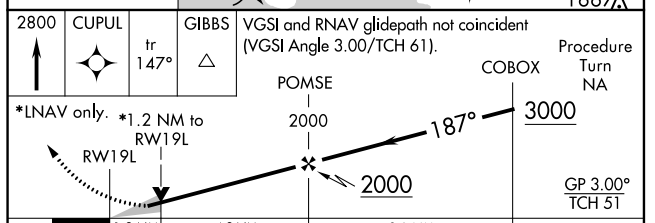
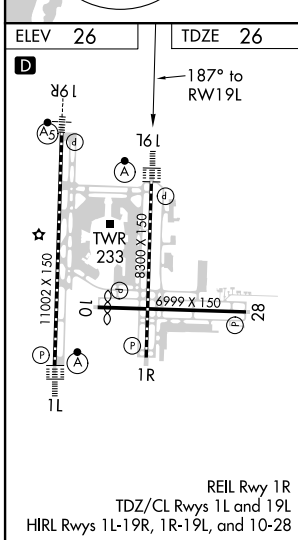
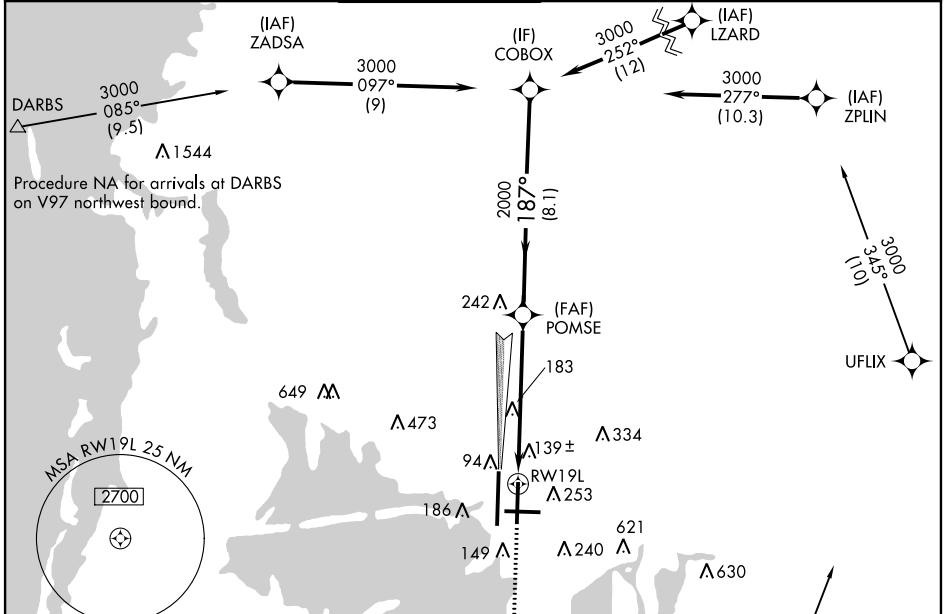
TAMPA INTL (TPA)

**⚠** For uncompensated Baro-VNAV systems, LNAV/VNAV NA below -15°C (5°F) or above 43°C (109°F). DME/DME RNP-0.3 NA. Simultaneous approach authorized with Rwy 19R. LNAV procedure NA during simultaneous operations. Use of FD or AP providing RNAV track guidance required during simultaneous operations. \*\* RVR 1800 authorized with use of FD or AP or HUD to DA.

ALSf-2

**MISSED APPROACH:**  
Climb to 2800 direct CUPUL and on track 147° to GIBBS and hold.

ARR <b>126.45</b>	D-ATIS	DEP <b>128.475</b>	TAMPA APP CON <b>118.5 307.175</b>	TAMPA TOWER <b>119.5 269.4</b>	GND CON <b>121.7 269.4</b>	CLNC DEL <b>133.6</b>	CPDLC
-------------------	--------	--------------------	------------------------------------	--------------------------------	----------------------------	-----------------------	-------



CATEGORY	A	B	C	D
LPV DA**	226/24	200 (200-½)		
LNAV/VNAV DA	440/45	414 (500-¾)		
LNAV MDA	460/24	434 (500-½)	460/40	434 (500-¾)
<b>C</b> CIRCLING	560-1	534 (600-1)	680-1¾ 654 (700-1¾)	980-3 954 (1000-3)

SE-3, 07 OCT 2021 to 04 NOV 2021

SE-3, 07 OCT 2021 to 04 NOV 2021