

WAAS Ch <b>87099</b> <b>W13A</b>	APP CRS <b>130°</b>	Rwy Idg <b>4559</b> TDZE <b>387</b> Apt Elev <b>390</b>
--	------------------------	---

# RNAV (GPS) RWY 13

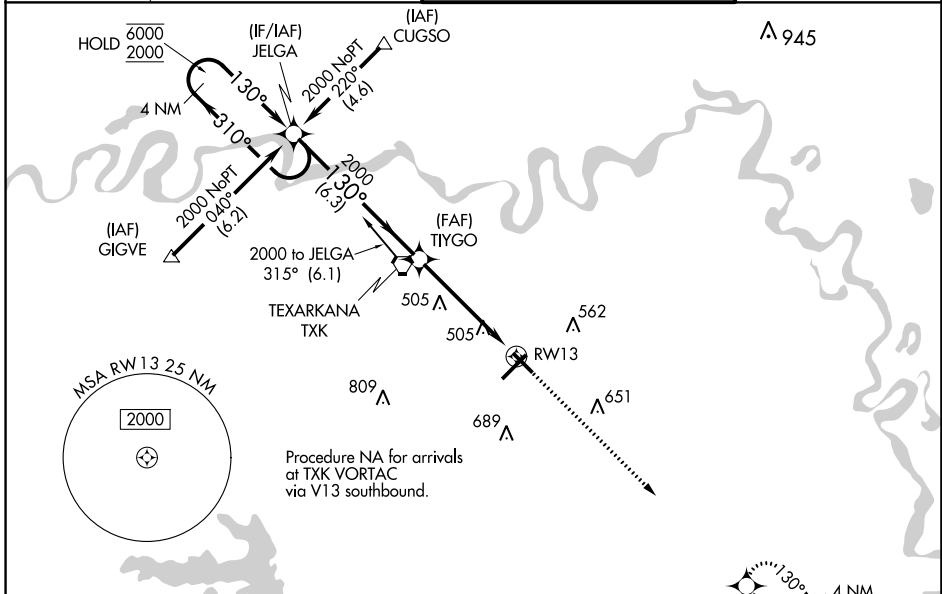
TEXARKANA RGNL-WEBB FLD (TXK)

RNP APCH.

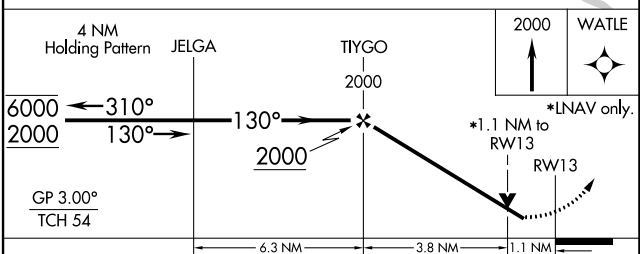
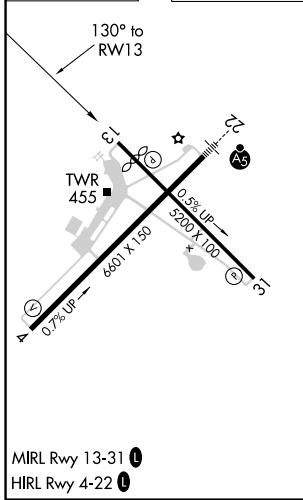
**⚠** Baro-VNAV and VDP NA when using De Queen altimeter setting. Rwy 13 helicopter visibility reduction below  $\frac{3}{4}$  SM NA. For uncompensated Baro-VNAV systems, LNAV/VNAV NA below -15°C or above 54°C. When local altimeter setting not received, use De Queen altimeter setting and increase all DA/MDA 100 feet; increase LNAV/VNAV all Cats and LNAV Cat C/D visibility  $\frac{3}{8}$  SM, and Circling Cat C/D visibility  $\frac{1}{4}$  SM.

**MISSED APPROACH:**  
Climb to 2000 direct WATLE and hold.

ATIS <b>120.2</b>	FORT WORTH CENTER <b>123.925 269.475</b>	TEXARKANA TOWER* <b>123.875</b> (CTAF) <b>235.625</b>	GND CON <b>119.225</b>
----------------------	---	--	---------------------------



ELEV <b>390</b>	<b>D</b>	TDZE <b>387</b>
-----------------	----------	-----------------



CATEGORY	A	B	C	D
LPV DA		647-1	260 (300-1)	
LNAV/VNAV DA		767-1½	380 (400-1½)	
LNAV MDA		760-1	373 (400-1)	
CIRCLING	820-1½ 430 (500-1½)	860-1½ 470 (500-1½)	900-1½ 510 (600-1½)	1000-2 610 (700-2)

SC-1, 07 OCT 2021 to 04 NOV 2021

SC-1, 07 OCT 2021 to 04 NOV 2021