

WAAS Ch <b>53699</b> <b>W22A</b>	APP CRS <b>220°</b>	Rwy Idg <b>6601</b> TDZE <b>384</b> Apt Elev <b>390</b>
--	------------------------	---

# RNAV (GPS) RWY 22

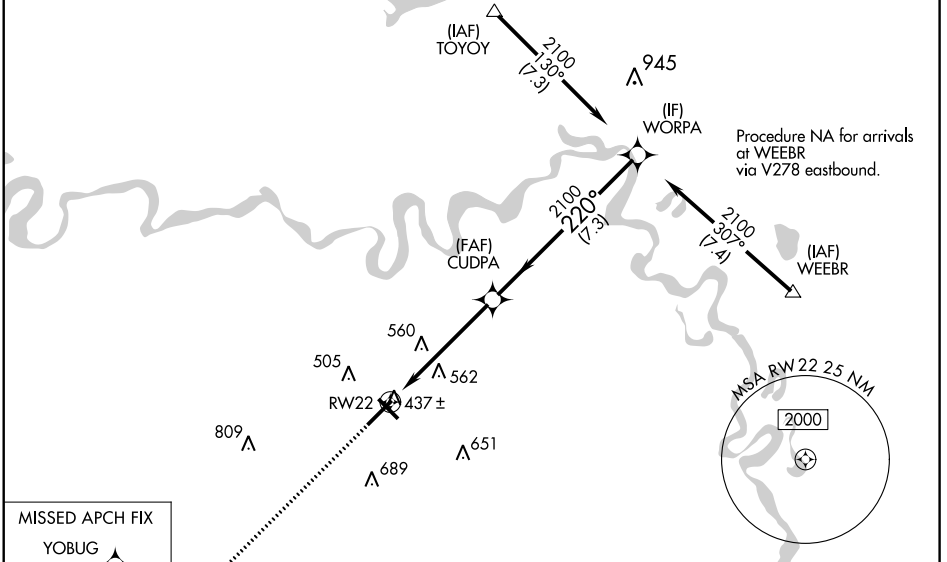
TEXARKANA RGNL-WEBB FLD (TXK)

**⚠** DME/DME RNP-0.3 NA. For uncompensated Baro-VNAV systems, LNAV/VNAV NA below -1.5°C (5°F) or above 48°C (118°F). When local altimeter setting not received, use J Lynn Helms Sevier County altimeter setting and increase all DA/MDA 100 feet, increase LPV all Cats visibility 1/4 mile, LNAV/VNAV all Cats visibility 1/2 mile, LNAV and circling Cat C and D visibility 1/4 mile. Baro-VNAV and VDP NA when using J Lynn Helms Sevier County altimeter setting. For inoperative MALSR when using J Lynn Helms Sevier County altimeter setting increase LPV all Cats visibility to 1/4.

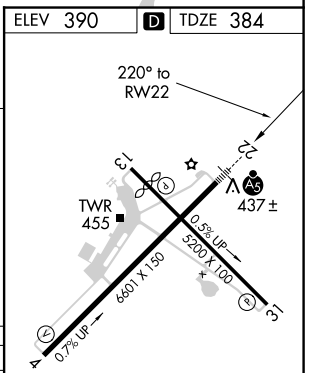
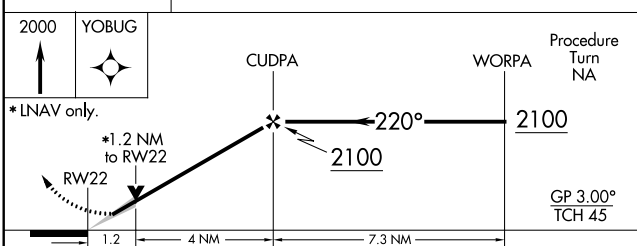
**MALSR**

**MISSED APPROACH:**  
Climb to 2000 direct YOBUG and hold.

ATIS <b>120.2</b>	FORT WORTH CENTER <b>123.925 269.475</b>	TEXARKANA TOWER ★ <b>123.875 (CTAF) 0 235.625</b>	GND CON <b>119.225</b>
----------------------	---	--	---------------------------



**MISSED APCH FIX**  
YOBUG



CATEGORY	A	B	C	D
LPV DA	634-1/2		250 (300-1/2)	
LNAV/VNAV DA	687-1/2		303 (300-1/2)	687-3/4 303 (300-3/4)
LNAV MDA	820-1/2	436 (500-1/2)	820-3/4 436 (500-3/4)	820-1 436 (500-1)
CIRCLING	820-1 430 (500-1)	860-1 470 (500-1)	900-1 1/2 510 (600-1 1/2)	1000-2 610 (700-2)



SC-1, 07 OCT 2021 to 04 NOV 2021

SC-1, 07 OCT 2021 to 04 NOV 2021